



Sorbus, Tamworth

burchell
edwards



Property Description

This home is very spacious and set in a quiet cul de sac on this popular residential estate on the west side of Tamworth.

Beginning with a great sized driveway that leads to a double garage, the home offers in brief an entrance hall, kitchen and lounge on the ground floor, along with three bedrooms, a bathroom and en suite on the first floor. The home boasts air conditioning and is presented in excellent condition throughout- call us today for more information and to see inside!

Entrance Hallway

Stairs to first floor accommodation, verticle central heating radiator, open plan to kitchen.

Kitchen

17' 8" max x 12' 11" max (5.38m max x 3.94m max)

Double glazed window to front elevation, a range of wall and base units with work surface over incorporating a sink with drainer unit, central island with storage and space for seating, five burner gas hob with cooker hood, butchers block counter tops, integrated oven and grill, space for dishwasher.

Lounge

17' 8" max x 9' 11" (5.38m max x 3.02m)

French doors to rear elevation, further double glazed door to rear elevation, central heating radiator and electric fire place.



Landing

Loft access via hatch and air conditioning unit.

Bedroom One

12' 2" x 9' 11" max into wardrobe (3.71m x 3.02m max into wardrobe)

Double glazed window to front elevation and central heating radiator.

Bedroom Two

10' 11" max x 9' 11" plus door recess (3.33m max x 3.02m plus door recess)

Double glazed window to rear elevation and central heating radiator.

Bedroom Three

8' 9" x 7' 2" (2.67m x 2.18m)

Double glazed window to rear elevation and central heating radiator.

Bathroom

Panelled bath with shower over and screen, W.C, wash hand basin and heated towel rail.

Front Garden

Block paved driveway providing off road parking for multiple vehicles.

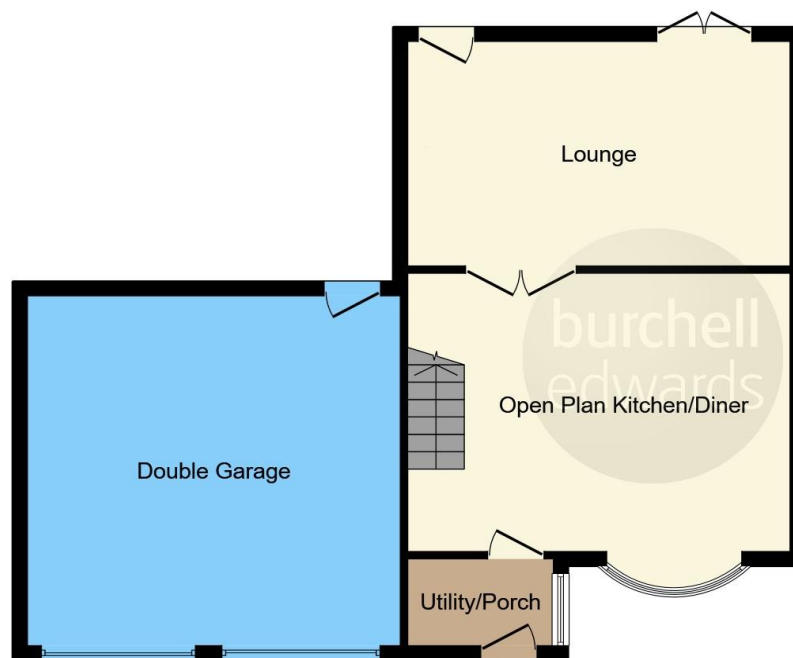
Rear Garden

Slabbed patio, artificial lawn and fencing to all boundaries.

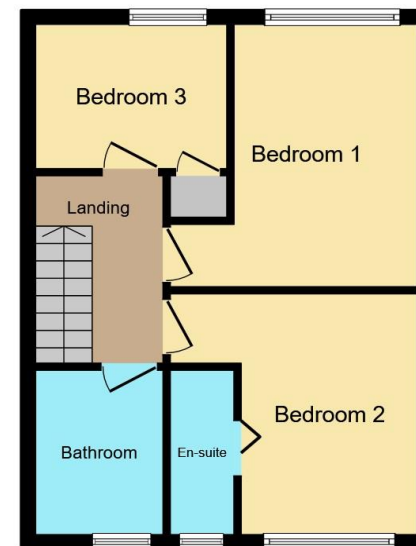








Ground Floor



First Floor

This floor plan is for illustrative purposes only. It is not drawn to scale. Any measurements, floor areas (including any total floor area), openings and orientation are approximate. No details are guaranteed, they cannot be relied upon for any purpose and they do not form part of any agreement. No liability is taken for any error, omission or misstatement. A party must rely upon its own inspection(s). Powered by www.focalagent.com

To view this property please contact Burchell Edwards on

T 01827 66400
E tamworth@burchelledwards.co.uk

1 Bolebridge Street
 TAMWORTH B79 7PA

EPC Rating: C Council Tax
 Band: B

Tenure: Freehold

view this property online burchelledwards.co.uk/Property/TAM207173



1. MONEY LAUNDERING REGULATIONS Intending purchasers will be asked to produce identification documentation at a later stage and we would ask for your co-operation in order that there will be no delay in agreeing the sale. 2. These particulars do not constitute part or all of an offer or contract. 3. The measurements indicated are supplied for guidance only and as such must be considered incorrect. Potential buyers are advised to recheck measurements before committing to any expense. 4. We have not tested any apparatus, equipment, fixtures, fittings or services and it is in the buyers interest to check the working condition of any appliances.

Burchell Edwards is a trading name of Connells Residential which is registered in England and Wales under company number 1489613, Registered Office is Cumbria House, 16-20 Hockliffe Street, Leighton Buzzard, Bedfordshire, LU7 1GN. VAT Registration Number is 500 2481 05.

See all our properties at www.burchelledwards.co.uk | www.rightmove.co.uk | www.zoopla.co.uk

Property Ref: TAM207173 - 0003