



Tolson Court, Fazeley Tamworth



Property Description

This gorgeous, characterful home has been cleverly designed over three floors to incorporate many original features. The property has a welcoming entrance hall, spacious kitchen / family room and guest W.C. on the ground floor.

The first floor offers two double bedrooms and a family bathroom, with the principal double bedroom and en-suite shower room located on the second floor. The property is well presented and bursting with character and must be viewed to fully appreciate. Call today for more information and to see inside!

Entrance Hallway

Infra- red ceiling mounted panel heater.

Guest W.C

W.C and wash hand basin.

Kitchen/ Family Room

26' 3" max x 10' 7" max (8.00m max x 3.23m max)
Single glazed window to rear elevation overlooking the canal, a range of wall and base units with quartz work surface over incorporating a sink with drainer unit, electric oven, electric induction hob, integrated dishwasher, under stairs storage cupboard housing washer dryer and electric water boiler. three infra - red ceiling mounted panel heaters.

Bedroom One

11' 3" plus door recess x 10' 4" max (3.43m plus door recess x 3.15m max)
Single glazed windows to rear elevation and infra-red ceiling mounted panel heater.

Bedroom Two

10' 9" max x 10' 7" (3.28m max x 3.23m)
Double glazed window to front elevation and infra - red ceiling mounted panel heater.

Shower Room

Walk in shower, W.C, wash hand basin, extractor, heated towel rail and tiling to splash prone areas.

Bedroom Three

10' 4" x 10' 4" (3.15m x 3.15m)
Single glazed window to gable elevation, roof skylight window and infra-red ceiling mounted panel heater.

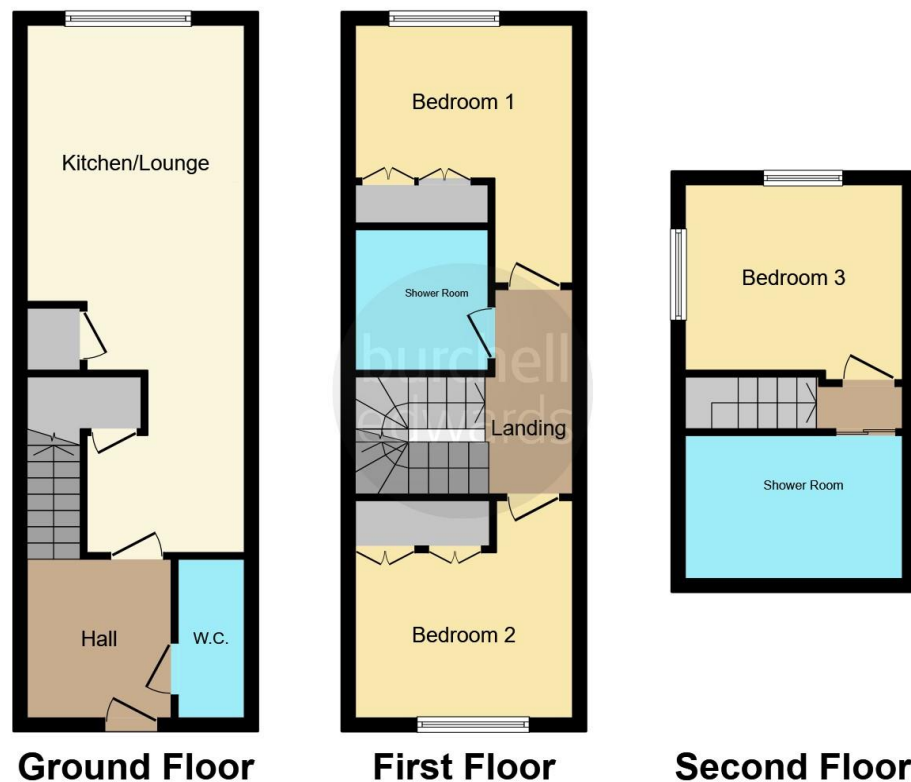
En-Suite/ Shower Room

Walk in shower, W.C, wash hand basin, heated towel rail, extractor fan and tiling to splash prone areas.









This floor plan is for illustrative purposes only. It is not drawn to scale. Any measurements, floor areas (including any total floor area), openings and orientation are approximate. No details are guaranteed, they cannot be relied upon for any purpose and they do not form part of any agreement. No liability is taken for any error, omission or misstatement. A party must rely upon its own inspection(s). Powered by www.focalagent.com

To view this property please contact Burchell Edwards on

T 01827 66400
E tamworth@burchelledwards.co.uk

1 Bolebridge Street
 TAMWORTH B79 7PA

EPC Rating: E

Tenure: Freehold

view this property online burchelledwards.co.uk/Property/TAM206874



1. MONEY LAUNDERING REGULATIONS Intending purchasers will be asked to produce identification documentation at a later stage and we would ask for your co-operation in order that there will be no delay in agreeing the sale. 2. These particulars do not constitute part or all of an offer or contract. 3. The measurements indicated are supplied for guidance only and as such must be considered incorrect. Potential buyers are advised to recheck measurements before committing to any expense. 4. We have not tested any apparatus, equipment, fixtures, fittings or services and it is in the buyers interest to check the working condition of any appliances.

Burchell Edwards is a trading name of Connells Residential which is registered in England and Wales under company number 1489613, Registered Office is Cumbria House, 16-20 Hockliffe Street, Leighton Buzzard, Bedfordshire, LU7 1GN. VAT Registration Number is 500 2481 05.

See all our properties at www.burchelledwards.co.uk | www.rightmove.co.uk | www.zoopla.co.uk

Property Ref: TAM206874 - 0005