



Deltic, Tamworth





Property Description

At the end of this quiet cul de sac sits this three bedroom semi detached home. The property has a lounge and a dining room on the ground floor along with a kitchen to the rear of the property. Upstairs there are three bedrooms along with the family bathroom. The property has a private rear garden which has been well looked after and the home has nice views to the front as it sits opposite a park.

Call today for more information or to see inside!

Entrance Porch

Double glazed door to front elevation.

Lounge

15' 10" x 10' 2" (4.83m x 3.10m)

Double glazed window to front elevation, central heating radiator and electric fire place.

Dining Room

8' 9" x 8' (2.67m x 2.44m)

Double glazed window to rear elevation and central heating radiator.

Kitchen

9' 8" x 8' 10" (2.95m x 2.69m)

Double glazed window to rear elevation, a range of wall and base units with work surface over incorporating a sink with drainer unit, space and connections for gas cooker, space and plumbing for washing machine, central heating radiator and built in pantry.

Landing

Double glazed window to side elevation and central heating radiator.

Bedroom One

12' 8" x 9' 10" (3.86m x 3.00m)

Double glazed window to rear elevation and central heating radiator.

Bedroom Two

8' 1" max plus recess x 12' 3" (2.46m max plus recess x 3.73m)

Double glazed window to front elevation, central heating radiator and fitted wardrobes.

Bedroom Three

9' 2" x 7' 5" plus door recess (2.79m x 2.26m plus door recess)

Double glazed window to front elevation and central heating radiator.

Bathroom

Double glazed window to rear elevation, panelled bath, wash hand basin and airing cupboard.

W.C

Double glazed window to side elevation and W.C.

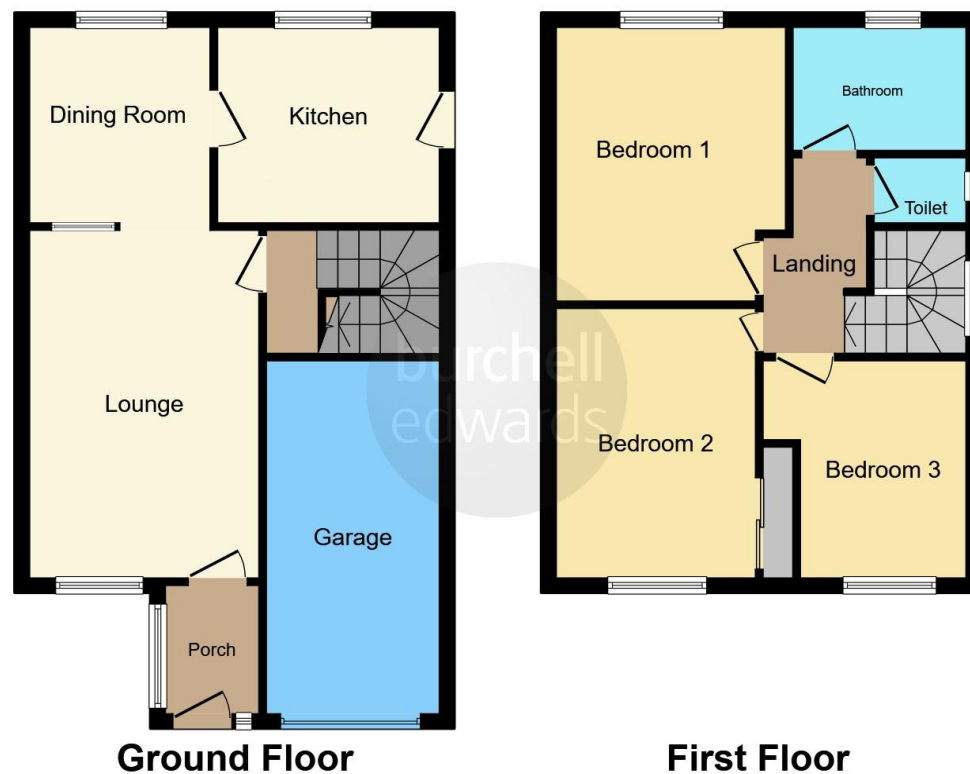
Rear Garden

Patio area, laid to lawn and mature plant beds.









This floor plan is for illustrative purposes only. It is not drawn to scale. Any measurements, floor areas (including any total floor area), openings and orientation are approximate. No details are guaranteed, they cannot be relied upon for any purpose and they do not form part of any agreement. No liability is taken for any error, omission or misstatement. A party must rely upon its own inspection(s). Powered by www.focalagent.com

To view this property please contact Burchell Edwards on

T 01827 66400
E tamworth@burchelledwards.co.uk

1 Bolebridge Street
 TAMWORTH B79 7PA

EPC Rating: D

Tenure: Freehold

view this property online burchelledwards.co.uk/Property/TAM206426



1. MONEY LAUNDERING REGULATIONS Intending purchasers will be asked to produce identification documentation at a later stage and we would ask for your co-operation in order that there will be no delay in agreeing the sale. 2. These particulars do not constitute part or all of an offer or contract. 3. The measurements indicated are supplied for guidance only and as such must be considered incorrect. Potential buyers are advised to recheck measurements before committing to any expense. 4. We have not tested any apparatus, equipment, fixtures, fittings or services and it is in the buyers interest to check the working condition of any appliances.

Burchell Edwards is a trading name of Connells Residential which is registered in England and Wales under company number 1489613, Registered Office is Cumbria House, 16-20 Hockliffe Street, Leighton Buzzard, Bedfordshire, LU7 1GN. VAT Registration Number is 500 2481 05.

See all our properties at www.burchelledwards.co.uk | www.rightmove.co.uk | www.zoopla.co.uk

Property Ref: TAM206426 - 0002