



Cotsford
Solihull





Property Description

Cotsford is located off White House Way in Solihull which is walking distance to local amenities such as Touchwood Centre, Solihull train station and local schools.

This luxury, first floor apartment offers two fantastic sized double bedrooms, bathroom, a spacious lounge/dining room and modern kitchen.

This property is perfect for first time buys, downsizers and investors alike.

This is not one to miss, book now for your viewing on 01217057551

Lounge

21' 5" x 11' 6" (6.53m x 3.51m)

Double glazed window to side elevation, central heating radiator and electric fire.

Kitchen

12' 3" x 12' 1" (3.73m x 3.68m)

L shaped room. Double glazed window to side elevation, a range of wall and base units with work surface over incorporating a sink with drainer unit, electric oven and hob, cooker hood, washing machine and central heating radiator.

Bedroom One

13' 5" x 11' 6" (4.09m x 3.51m)

Double glazed window to side elevation and central heating radiator.

Bedroom Two

12' 2" x 9' (3.71m x 2.74m)

Double glazed window to side elevation and central heating radiator.

Bathroom

Double glazed window to side elevation, W.C, wash hand basin, shower cubicle, bath, central heating radiator and fully tiled walls.

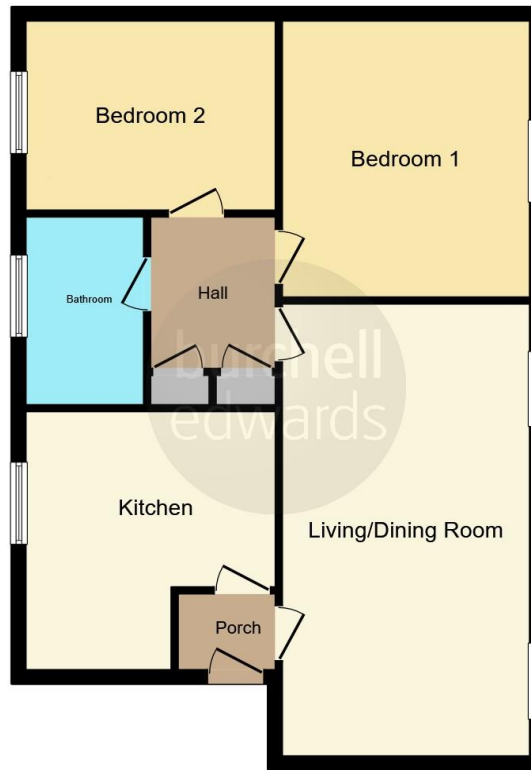
Garage

Power and lighting.









This floor plan is for illustrative purposes only. It is not drawn to scale. Any measurements, floor areas (including any total floor area), openings and orientation are approximate. No details are guaranteed, they cannot be relied upon for any purpose and they do not form part of any agreement. No liability is taken for any error, omission or misstatement. A party must rely upon its own inspection(s). Powered by www.focalagent.com

To view this property please contact Burchell Edwards on

T 0121 705 7551
E solihull@burchelledwards.co.uk

29 High Street
SOLIHULL B91 3SN

EPC Rating: C

Tenure: Leasehold

check out more properties at burchelledwards.co.uk

This is a Leasehold property. We are awaiting further details about the Term of the lease. For further information please contact the branch. Please note additional fees could be incurred for items such as Leasehold packs.



1. MONEY LAUNDERING REGULATIONS Intending purchasers will be asked to produce identification documentation at a later stage and we would ask for your co-operation in order that there will be no delay in agreeing the sale. 2. These particulars do not constitute part or all of an offer or contract. 3. The measurements indicated are supplied for guidance only and as such must be considered incorrect. Potential buyers are advised to recheck measurements before committing to any expense. 4. We have not tested any apparatus, equipment, fixtures, fittings or services and it is in the buyers interest to check the working condition of any appliances.

Burchell Edwards is a trading name of Connells Residential which is registered in England and Wales under company number 1489613, Registered Office is Cumbria House, 16-20 Hockliffe Street, Leighton Buzzard, Bedfordshire, LU7 1GN. VAT Registration Number is 500 2481 05.

See all our properties at www.burchelledwards.co.uk | www.rightmove.co.uk | www.zoopla.co.uk

Property Ref: SOL205675 - 0003