



Foredrove Lane
Solihull





Property Description

This spacious Mid-terrace house offers: a large front room, kitchen diner, three good sized bedrooms, separate bathroom and toilet, back garden and paved driveway.

Set back from the road this house is situated conveniently for the modern family located within walking distance to shops and amenities. Regular and easy public transport links along with effortless access to M42, motorway links and Birmingham Airport (2 miles).

This immaculate property is perfect for first time buyers, small families and investors alike.

Entrance Hallway

Double glazed door to front elevation, wooden flooring, storage cupboard and central heating radiator.

Cloakroom/ W.C

W.C.

Lounge

14' 11" x 12' 1" (4.55m x 3.68m)

Double glazed window to front elevation and central heating radiator.

Kitchen

19' 11" x 10' 2" (6.07m x 3.10m)

Double glazed window to rear elevation, a range of wall and base units with work surface over incorporating a sink with drainer unit, electric oven, gas hob, cooker hood, fridge freezer, washing machine, central heating radiator and tiling to splash prone areas.

Utility Room

7' 10" x 5' 6" (2.39m x 1.68m)

Double glazed window to side elevation, washing machine, tiling to splash prone areas and a range of wall and base storage units.

Bedroom One

.12' 3" x 9' 10" (3.73m x 3.00m)

Double glazed window to front elevation,
central heating radiator and fitted wardrobes.

Bedroom Two

10' 5" x 9' 11" (3.17m x 3.02m)

Double glazed window to front elevation,
central heating radiator and fitted wardrobes.

Bedroom Three

9' 10" x 6' 11" (3.00m x 2.11m)

Double glazed window to rear elevation and
central heating radiator.

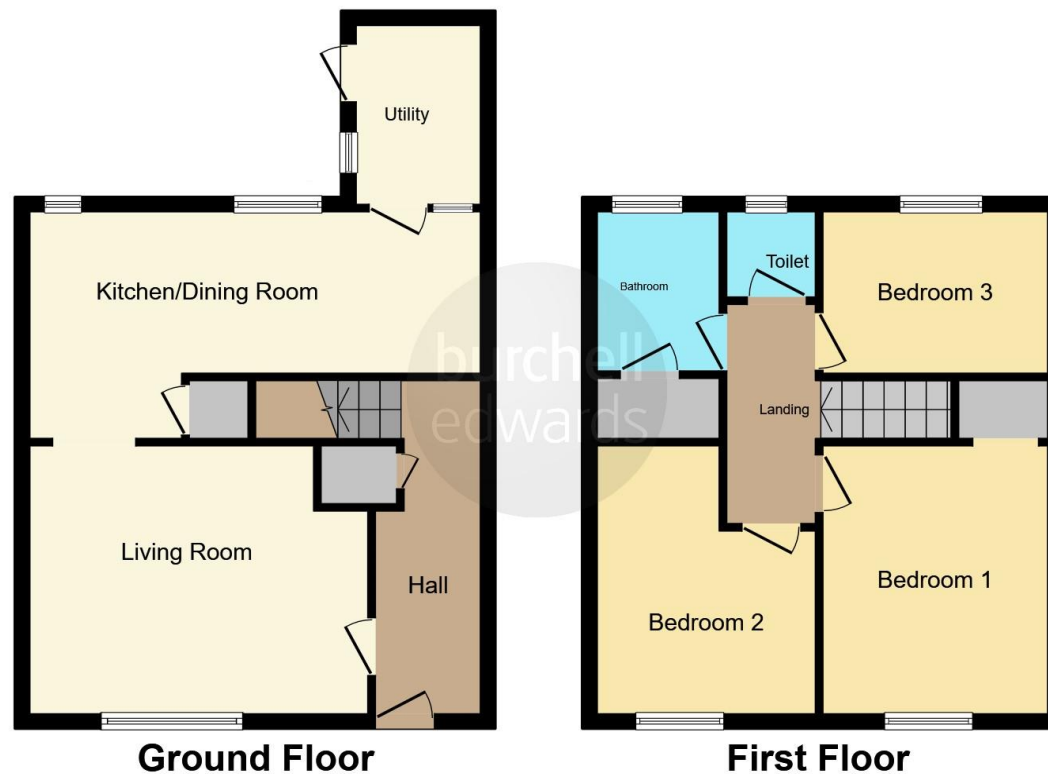
Bathroom

Double glazed window to front elevation,
bath, shower, W.C, wash hand basin, heated
towel rail, shaver point and fully tiled walls.









This floor plan is for illustrative purposes only. It is not drawn to scale. Any measurements, floor areas (including any total floor area), openings and orientation are approximate. No details are guaranteed, they cannot be relied upon for any purpose and they do not form part of any agreement. No liability is taken for any error, omission or misstatement. A party must rely upon its own inspection(s). Powered by www.focalagent.com

To view this property please contact Burchell Edwards on

T 0121 705 7551
E solihull@burchelledwards.co.uk

29 High Street
 SOLIHULL B91 3SN

EPC Rating: D

Tenure: Freehold

view this property online burchelledwards.co.uk/Property/SOL205723



1. MONEY LAUNDERING REGULATIONS Intending purchasers will be asked to produce identification documentation at a later stage and we would ask for your co-operation in order that there will be no delay in agreeing the sale. 2. These particulars do not constitute part or all of an offer or contract. 3. The measurements indicated are supplied for guidance only and as such must be considered incorrect. Potential buyers are advised to recheck measurements before committing to any expense. 4. We have not tested any apparatus, equipment, fixtures, fittings or services and it is in the buyers interest to check the working condition of any appliances.

Burchell Edwards is a trading name of Connells Residential which is registered in England and Wales under company number 1489613, Registered Office is Cumbria House, 16-20 Hockliffe Street, Leighton Buzzard, Bedfordshire, LU7 1GN. VAT Registration Number is 500 2481 05.

See all our properties at www.burchelledwards.co.uk | www.rightmove.co.uk | www.zoopla.co.uk

Property Ref: SOL205723 - 0006