



Windrush Close
Solihull



Windrush Close Solihull B92 8QL

for sale
£240,000



Property Description

Situated on a quaint cul-de-sac. The property offers a large living/dining space, kitchen, three bedrooms and family bathroom. Large garden to rear. There is plenty of scope to put your own stamp on this family home.

Property is located nearby JLR, Solihull Hospital and Airport with plenty of transport links and public transport. Shop complex nearby including popular gyms. Centrally located this gem offers practicality and convenience to the modern family.

This is a must view to fully appreciate size, condition and potential.

Cloakroom

W.C

Lounge

20' 7" x 10' (6.27m x 3.05m)

Double glazed windows to front and rear elevations, gas fire and central heating radiator.

Kitchen

14' 2" x 9' (4.32m x 2.74m)

Double glazed window to rear elevation, a range of wall and base units with work surface over incorporating a sink with drainer unit, gas hob and oven, washing machine, tiling to splash prone areas and central heating boiler.

Bedroom One

13' 4" x 9' 10" into wardrobe (4.06m x 3.00m into wardrobe)

Double glazed window to rear elevation, central heating radiator and built in wardrobes.

Bedroom Two

9' 1" into doorway x 9' 1" (2.77m into doorway x 2.77m)

Double glazed window to rear elevation and central heating radiator.

Bedroom Three

.10' 1" x 6' 10" (3.07m x 2.08m)

Double glazed window to front elevation and central heating radiator.

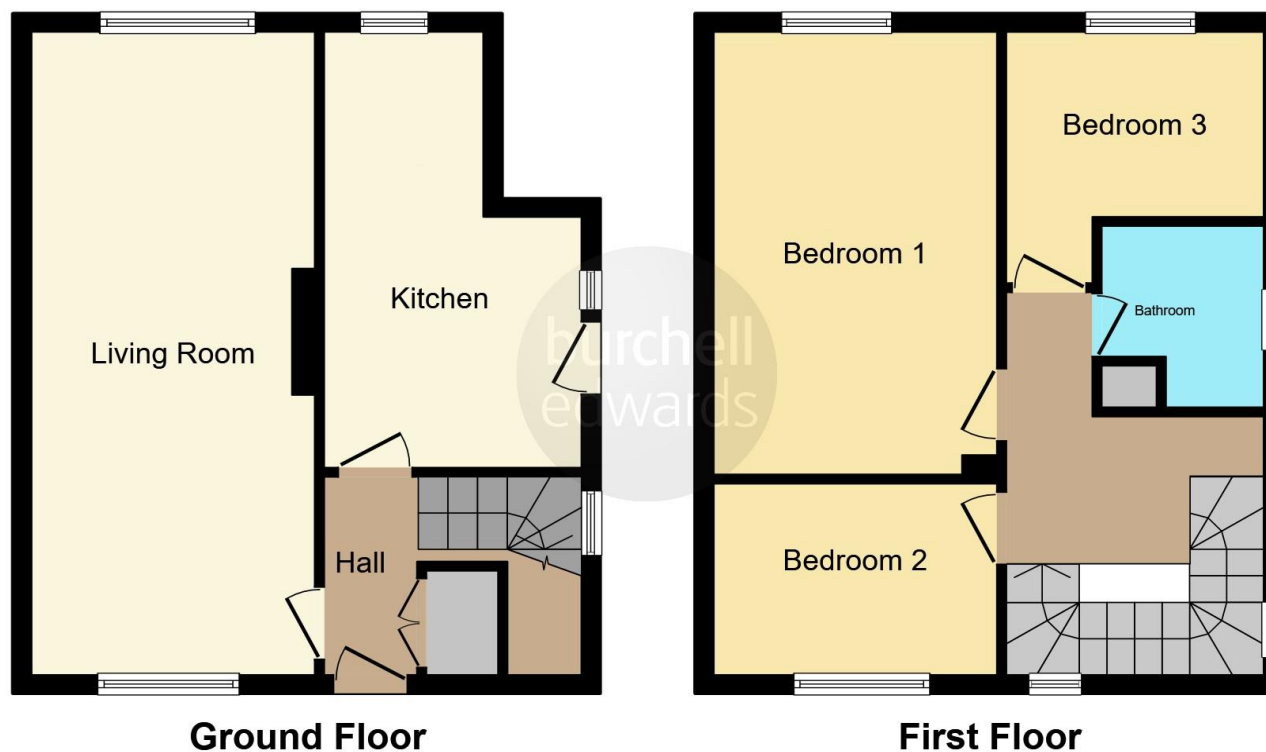
Bathroom

Double glazed window to side elevation, W.C, wash hand basin, bath, shower, central heating radiator and tiling to splash prone areas.









This floor plan is for illustrative purposes only. It is not drawn to scale. Any measurements, floor areas (including any total floor area), openings and orientation are approximate. No details are guaranteed, they cannot be relied upon for any purpose and they do not form part of any agreement. No liability is taken for any error, omission or misstatement. A party must rely upon its own inspection(s). Powered by www.focalagent.com

To view this property please contact Burchell Edwards on

T 0121 705 7551
E solihull@burchelledwards.co.uk

29 High Street
 SOLIHULL B91 3SN

EPC Rating: C

Tenure: Freehold

view this property online burchelledwards.co.uk/Property/SOL205619



1. MONEY LAUNDERING REGULATIONS Intending purchasers will be asked to produce identification documentation at a later stage and we would ask for your co-operation in order that there will be no delay in agreeing the sale. 2. These particulars do not constitute part or all of an offer or contract. 3. The measurements indicated are supplied for guidance only and as such must be considered incorrect. Potential buyers are advised to recheck measurements before committing to any expense. 4. We have not tested any apparatus, equipment, fixtures, fittings or services and it is in the buyers interest to check the working condition of any appliances.

Burchell Edwards is a trading name of Connells Residential which is registered in England and Wales under company number 1489613, Registered Office is Cumbria House, 16-20 Hockliffe Street, Leighton Buzzard, Bedfordshire, LU7 1GN. VAT Registration Number is 500 2481 05.

See all our properties at www.burchelledwards.co.uk | www.rightmove.co.uk | www.zoopla.co.uk

Property Ref: SOL205619 - 0004