



Lydan House Pool Bank, Redditch





Property Description

Charming two-bedroom ground floor apartment, situated in a popular location of Redditch. As you enter in to the hallway you have immediate access to the living room, family bathroom and two generously sized bedrooms. All rooms in the property benefit from double glazing with the living room having a large bay window which allows natural light to illuminate the room. Furthermore there is an adjoining kitchen with integrated hob and oven as part of its configuration. Parking is secure, located at the front of the property.

Entrance Hallway

Central heating radiator, intercom system and carpet.

Lounge

13' 2" x 12' 3" max (4.01m x 3.73m max)
Double glazed window to side elevation, carpet and central heating radiator.

Kitchen

5' 10" x 10' 7" (1.78m x 3.23m)
Double glazed window to side elevation, a range of wall and base units with work surface over incorporating a sink with drainer unit, gas hob, tiled flooring and spotlights.



Bedroom One

12' 2" x 8' 5" (3.71m x 2.57m)

Double glazed window to side elevation, central heating radiator and carpet.

Bedroom Two

8' 10" x 8' 9" (2.69m x 2.67m)

Double glazed window to side elevation and central heating radiator.

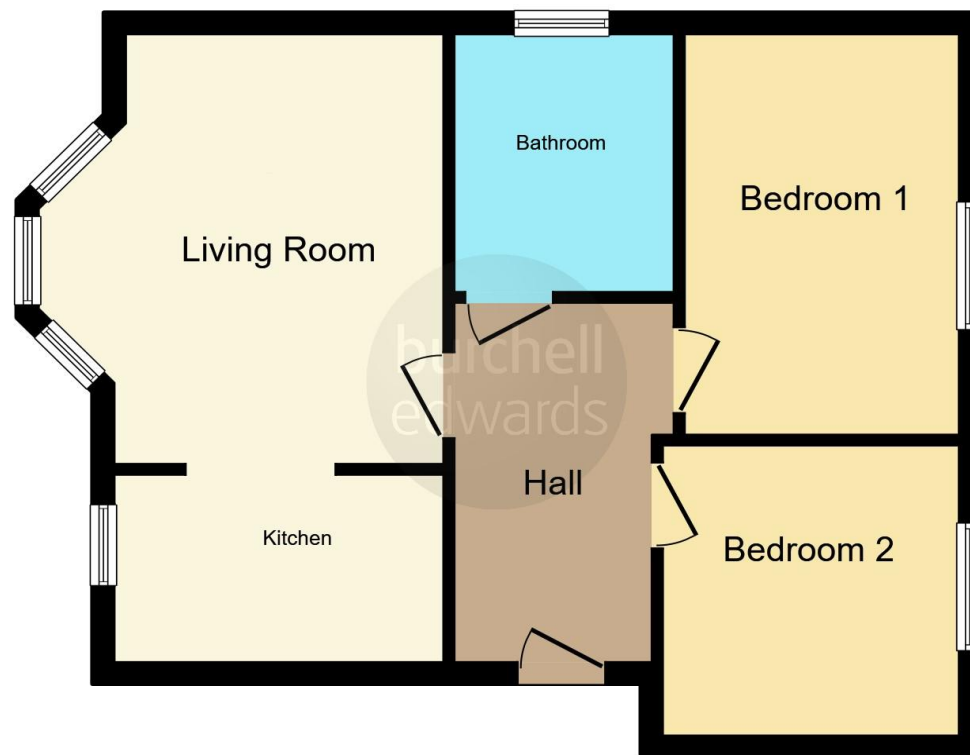
Bathroom

Double glazed obscure window to rear elevation, spotlights, heated towel rail, WC, walk in shower, WB mixer tap, bath, extractor and fully tiled to walls.









This floor plan is for illustrative purposes only. It is not drawn to scale. Any measurements, floor areas (including any total floor area), openings and orientation are approximate. No details are guaranteed, they cannot be relied upon for any purpose and they do not form part of any agreement. No liability is taken for any error, omission or misstatement. A party must rely upon its own inspection(s). Powered by www.focalagent.com

To view this property please contact Burchell Edwards on

T 0121 733 3553
E shirley@burchelledwards.co.uk

183 Stratford Road Shirley
SOLIHULL B90 3AU

EPC Rating: C

Tenure: Leasehold

view this property online burchelledwards.co.uk/Property/SHI207935

This is a Leasehold property. We are awaiting further details about the Term of the lease. For further information please contact the branch. Please note additional fees could be incurred for items such as Leasehold packs.



1. MONEY LAUNDERING REGULATIONS Intending purchasers will be asked to produce identification documentation at a later stage and we would ask for your co-operation in order that there will be no delay in agreeing the sale. 2. These particulars do not constitute part or all of an offer or contract. 3. The measurements indicated are supplied for guidance only and as such must be considered incorrect. Potential buyers are advised to recheck measurements before committing to any expense. 4. We have not tested any apparatus, equipment, fixtures, fittings or services and it is in the buyers interest to check the working condition of any appliances.

Burchell Edwards is a trading name of Connells Residential which is registered in England and Wales under company number 1489613, Registered Office is Cumbria House, 16-20 Hockliffe Street, Leighton Buzzard, Bedfordshire, LU7 1GN. VAT Registration Number is 500 2481 05.

See all our properties at www.burchelledwards.co.uk | www.rightmove.co.uk | www.zoopla.co.uk

Property Ref: SHI207935 - 0004