



Dolphin Lane,,Birmingham





Property Description

Spacious 3-bedroom end-of-terrace house in B27, meticulously maintained. Boasting excellent transport links, a charming rear garden, and a modern kitchen. Don't miss the chance to explore during our upcoming open day - a home that blends comfort with convenience. Great location and well looked after

Front Garden

Off road parking.

Lounge

11' 4" x 14' 5" (3.45m x 4.39m)

Double glazed bay window to front elevation and laminate flooring.

Kitchen

7' 6" x 12' 5" (2.29m x 3.78m)

Double glazed window to rear elevation, a range of wall and base units with work surface over incorporating a sink with drainer, washing machine, gas hob, oven, central heating radiator and laminate flooring.



Landing

Two double glazed windows to side elevation, carpet, central heating radiator and loft access.

Bedroom One

8' 5" x 17' 8" (2.57m x 5.38m)

Double glazed window to rear elevation, carpet, central heating radiator and storage.

Bedroom Two

10' 9" x 7' 8" (3.28m x 2.34m)

Double glazed window to front elevation, central heating boiler and central heating radiator.

Bedroom Three

7' 8" x 7' 5" (2.34m x 2.26m)

Double glazed windows to front and side elevations and carpet.

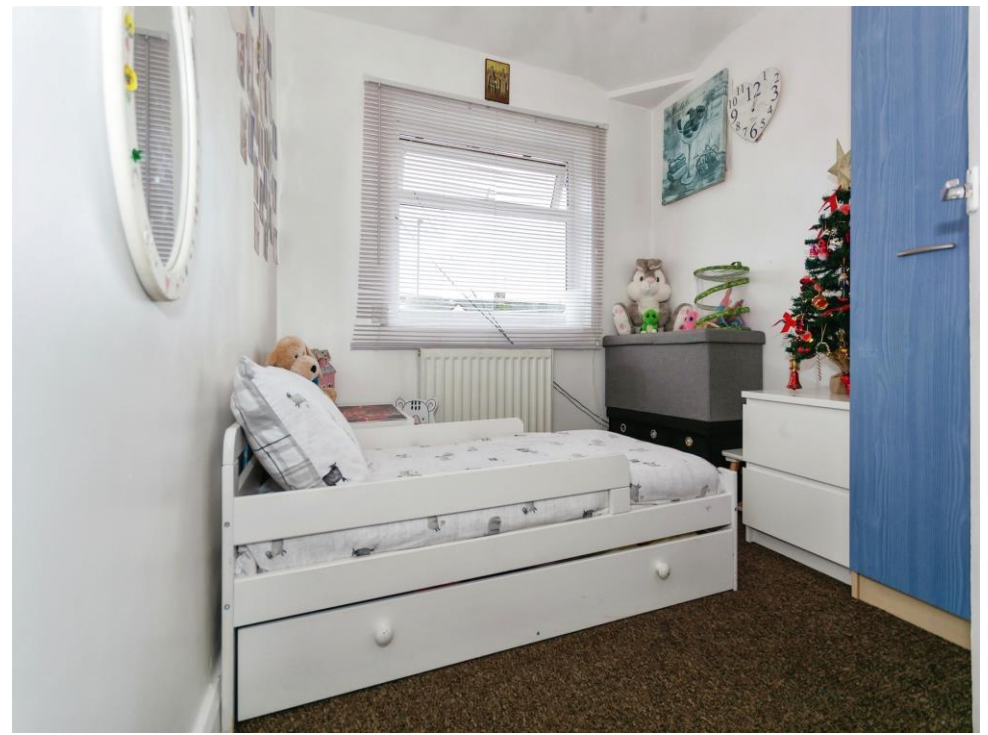
Bathroom

Double glazed window to rear elevation, bath, W.C, wash hand basin, extractor fan and tiled flooring.

Rear Garden

Lawn and side access.









This floorplan is for illustrative purposes only and is not drawn to scale. Measurements, floor-areas, openings and orientations are approximate. They should not be relied upon for any purpose and do not form any part of an agreement. No liability is taken for any error or mis-statement. All parties must rely on their own inspections.

To view this property please contact Burchell Edwards on

T 0121 733 3553
E shirley@burchelledwards.co.uk

183 Stratford Road Shirley
 SOLIHULL B90 3AU

EPC Rating: D

Tenure: Freehold

view this property online burchelledwards.co.uk/Property/SHI207522



1. MONEY LAUNDERING REGULATIONS Intending purchasers will be asked to produce identification documentation at a later stage and we would ask for your co-operation in order that there will be no delay in agreeing the sale. 2. These particulars do not constitute part or all of an offer or contract. 3. The measurements indicated are supplied for guidance only and as such must be considered incorrect. Potential buyers are advised to recheck measurements before committing to any expense. 4. We have not tested any apparatus, equipment, fixtures, fittings or services and it is in the buyers interest to check the working condition of any appliances.

Burchell Edwards is a trading name of Connells Residential which is registered in England and Wales under company number 1489613, Registered Office is Cumbria House, 16-20 Hockliffe Street, Leighton Buzzard, Bedfordshire, LU7 1GN. VAT Registration Number is 500 2481 05.

See all our properties at www.burchelledwards.co.uk | www.rightmove.co.uk | www.zoopla.co.uk

Property Ref: SHI207522 - 0012