



Kenwood Road, Birmingham



Property Description

A traditional style three bedroom, end terrace property in a popular location. Accommodation comprises entrance hallway, lounge, kitchen, and ground floor bathroom. First floor has three good sized bedrooms. Property further benefits from double glazing, gas central heating, fore and rear gardens and off road parking. A great first time purchase.

Entrance Hallway

Central heating radiator, stairs to first floor accommodation.

Lounge

13' 10" x 13' 6" (4.22m x 4.11m)
double glazed bay window to front elevation, central heating radiator and storage.

Kitchen

10' 9" x 9' 3" (3.28m x 2.82m)
Double glazed window to front elevation, a range of wall and base units with work surface over incorporating a sink with drainer unit, space for appliances, tiling to splash prone areas.



Landing

Double glazed window to side elevation and loft access via hatch.

Bedroom One

16' 1" x 10' 8" (4.90m x 3.25m)

Double glazed window to front elevation, central heating radiator and storage.

Bedroom Two

12' 1" x 8' 5" (3.68m x 2.57m)

Double glazed window and central heating radiator.

Bedroom Three

9' 6" x 7' 4" (2.90m x 2.24m)

Double glazed window to rear elevation and central heating radiator.

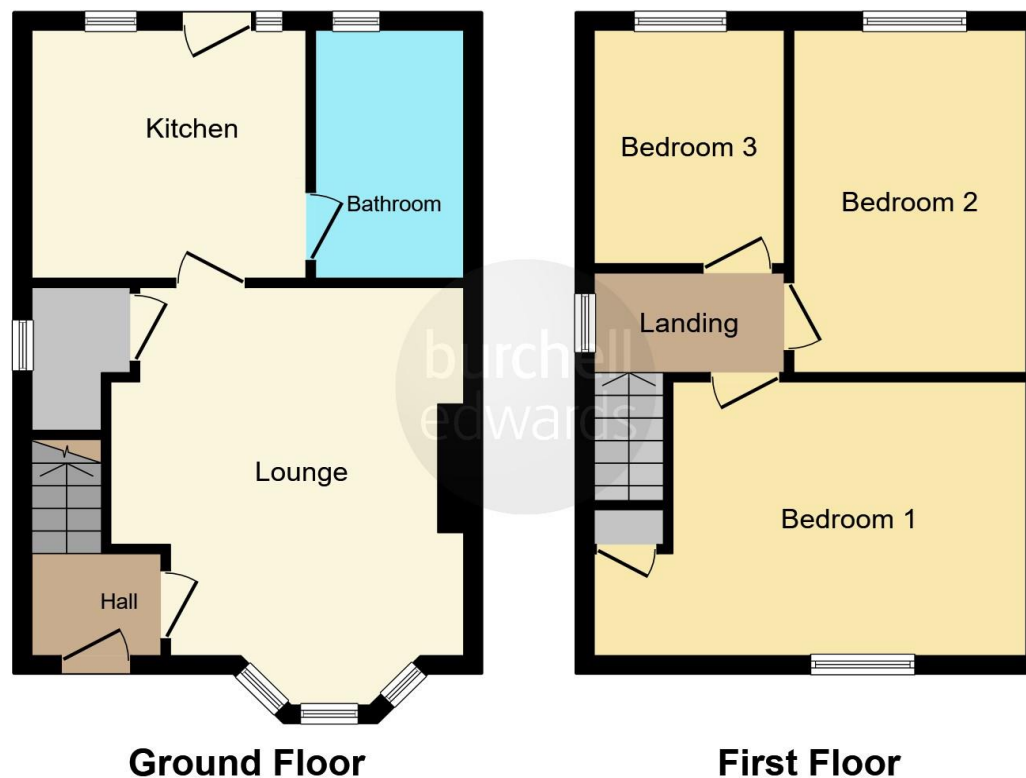
Bathroom

Double glazed window to rear elevation, W.C, wash hand basin, bath and central heating radiator.









This floor plan is for illustrative purposes only. It is not drawn to scale. Any measurements, floor areas (including any total floor area), openings and orientation are approximate. No details are guaranteed, they cannot be relied upon for any purpose and they do not form part of any agreement. No liability is taken for any error, omission or misstatement. A party must rely upon its own inspection(s). Powered by www.focalagent.com

To view this property please contact Burchell Edwards on

T 0121 742 1725
E sheldon@burchelledwards.co.uk

2208 Coventry Road Sheldon
 BIRMINGHAM B26 3JH

EPC Rating: E Council Tax
 Band: A

Tenure: Freehold

view this property online burchelledwards.co.uk/Property/SHL211160



1. MONEY LAUNDERING REGULATIONS Intending purchasers will be asked to produce identification documentation at a later stage and we would ask for your co-operation in order that there will be no delay in agreeing the sale. 2. These particulars do not constitute part or all of an offer or contract. 3. The measurements indicated are supplied for guidance only and as such must be considered incorrect. Potential buyers are advised to recheck measurements before committing to any expense. 4. We have not tested any apparatus, equipment, fixtures, fittings or services and it is in the buyers interest to check the working condition of any appliances.

Burchell Edwards is a trading name of Connells Residential which is registered in England and Wales under company number 1489613, Registered Office is Cumbria House, 16-20 Hockliffe Street, Leighton Buzzard, Bedfordshire, LU7 1GN. VAT Registration Number is 500 2481 05.

See all our properties at www.burchelledwards.co.uk | www.rightmove.co.uk | www.zoopla.co.uk

Property Ref: SHL211160 - 0004