



Yardley Green Road, Stechford, Birmingham

burchell
edwards

Yardley Green Road, Stechford, Birmingham, B33 8TF

for sale offers in the region of
£220,000



Property Description

FULL OF CHARACTER, BEAUTIFULLY PRESENTED! An opportunity to own something special. This THREE BEDROOM traditional MID TERRACED is larger than it appears and an IMPRESSIVE GARDEN. Ideal for FIRST TIME BUYERS or BUY TO LET INVESTORS. DONT MISS OUT! This a MUST VIEW so call now on 0121 742 1725!!!!!!

Entrance Hallway

Central heating radiator.

Lounge

13' 10" nex to bay x 12' 2" (4.22m nex to bay x 3.71m)

Double glazed bay window to front elevation, central heating radiator and storage.

Kitchen

9' 3" x 9' 2" (2.82m x 2.79m)

Double glazed window and door to rear elevation, a range of wall and base units with work surface over incorporating a sink with drainer unit, space for appliances, central heating radiator.



Bedroom One

14' 2" x 10' 8" (4.32m x 3.25m)

Double glazed window to front elevation,
central heating radiator and fitted cupboard.

Bedroom Two

12' 8" x 9' 5" (3.86m x 2.87m)

Double glazed window to front elevation,
central heating radiator and fitted cupboard.

Bedroom Three

9' 6" x 7' 4" (2.90m x 2.24m)

Double glazed window to rear elevation,
central heating radiator and central heating
boiler housed.

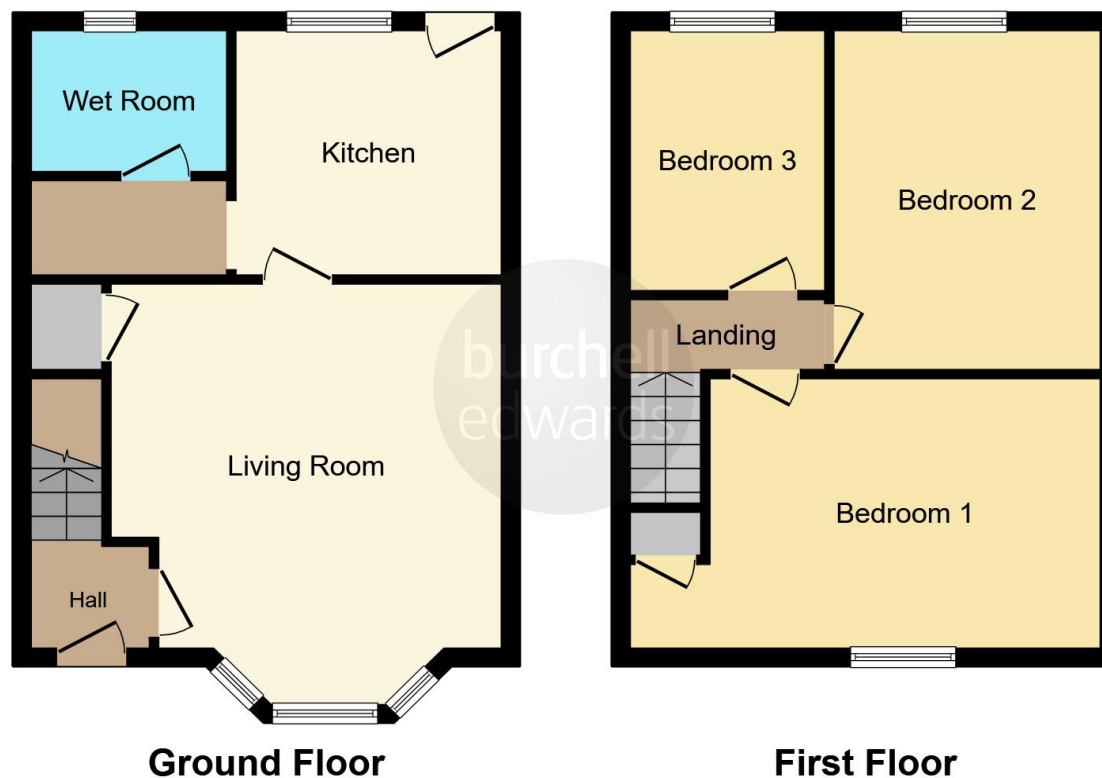
Bathroom

Wet room style with double glazed window to
rear elevation, W.C, wash hand basin, electric
shower, extractor, central heating radiator,
tiling to walls.









This floor plan is for illustrative purposes only. It is not drawn to scale. Any measurements, floor areas (including any total floor area), openings and orientation are approximate. No details are guaranteed, they cannot be relied upon for any purpose and they do not form part of any agreement. No liability is taken for any error, omission or misstatement. A party must rely upon its own inspection(s). Powered by www.focalagent.com

To view this property please contact Burchell Edwards on

T 0121 742 1725
E sheldon@burchelledwards.co.uk

2208 Coventry Road Sheldon
 BIRMINGHAM B26 3JH

EPC Rating: D Council Tax
 Band: A

Tenure: Freehold

view this property online burchelledwards.co.uk/Property/SHL211045



1. MONEY LAUNDERING REGULATIONS Intending purchasers will be asked to produce identification documentation at a later stage and we would ask for your co-operation in order that there will be no delay in agreeing the sale. 2. These particulars do not constitute part or all of an offer or contract. 3. The measurements indicated are supplied for guidance only and as such must be considered incorrect. Potential buyers are advised to recheck measurements before committing to any expense. 4. We have not tested any apparatus, equipment, fixtures, fittings or services and it is in the buyers interest to check the working condition of any appliances.

Burchell Edwards is a trading name of Connells Residential which is registered in England and Wales under company number 1489613, Registered Office is Cumbria House, 16-20 Hockliffe Street, Leighton Buzzard, Bedfordshire, LU7 1GN. VAT Registration Number is 500 2481 05.

See all our properties at www.burchelledwards.co.uk | www.rightmove.co.uk | www.zoopla.co.uk

Property Ref: SHL211045 - 0006