



Billingsley Road, Birmingham

burchell
edwards



Property Description

This beautiful property is located in a quiet and peaceful neighbourhood. The interior of the home is tastefully decorated with modern finishes and high-quality fixtures throughout.

The spacious kitchen is perfect for entertaining guests and comes fully equipped with all the necessary appliances. The two reception rooms provide ample space for relaxing and unwinding, while the four bedrooms offer plenty of room for a growing family or guests.

Don't miss out CALL NOW ON 0121 742 1725!!!

Entrance Hallway

Double glazed door and window to front elevation, open space downstairs, central heating radiator and tiled flooring.

Lounge

19' 11" x 10' 4" max (6.07m x 3.15m max)
Two Double glazed windows, & Two central heating radiators and french doors.

Dining Room

11' 9" max x 14' 3" max (3.58m max x 4.34m max)
One double glazed window and one central heating radiator.

Kitchen

19' 2" max x 17' 7" max (5.84m max x 5.36m max)
Double glazed skylight, double glazed door and window to rear elevation, a range of wall and base units with work surface over incorporating a sink with drainer unit, range cooker, dishwasher, two central heating radiators and spotlights.

Utility Room

9' 3" x 4' 6" (2.82m x 1.37m)
Double glazed window, sink with drainer unit, tiled flooring and central heating radiator.



Landing

Storage and two loft hatches.

Bedroom One

11' 8" x 12' 4" (3.56m x 3.76m)

Two double glazed windows, central heating radiator and fitted wardrobes.

Bedroom Two

12' 4" x 7' 10" (3.76m x 2.39m)

Double glazed window, central heating radiator and built in wardrobes.

Bedroom Three

10' x 10' 4" (3.05m x 3.15m)

Double glazed window and central heating radiator.

Bedroom Four

8' x 8' 7" (2.44m x 2.62m)

Double glazed window, central heating radiator and built in over stairs storage.

Bathroom

Double glazed window, W.C, wash hand basin, corner shower, roll top bath, central heating radiator, extractor, tiling to walls and tiled flooring.

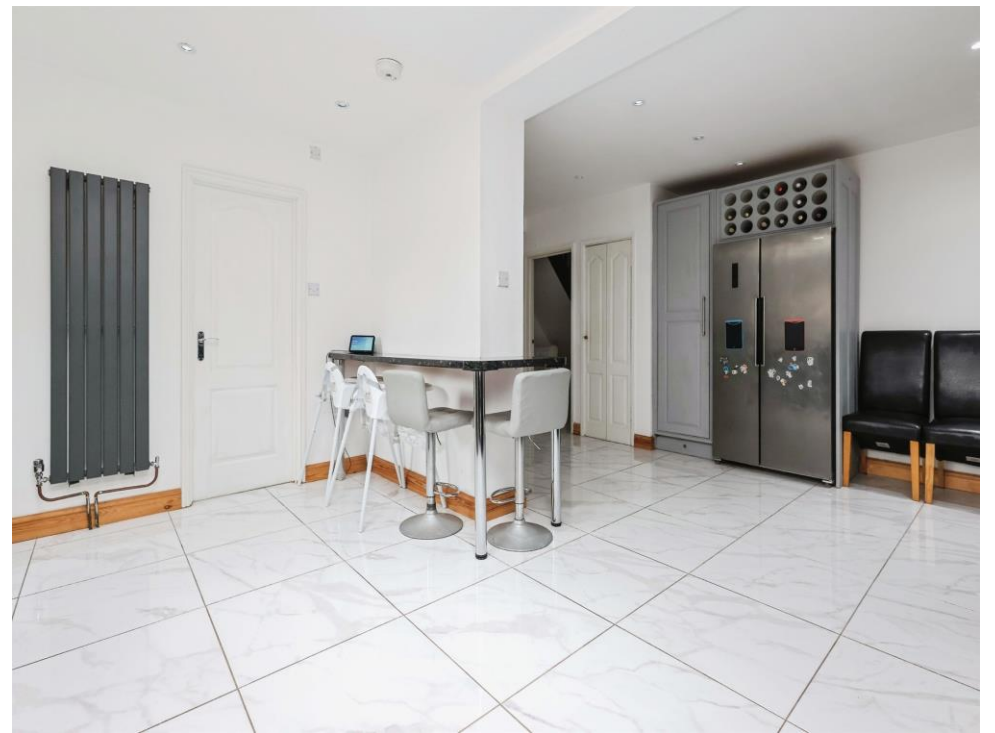
Second Bathroom

Double glazed window, bath, W.C, wash hand basin, central heating radiator, tiling to walls and flooring.

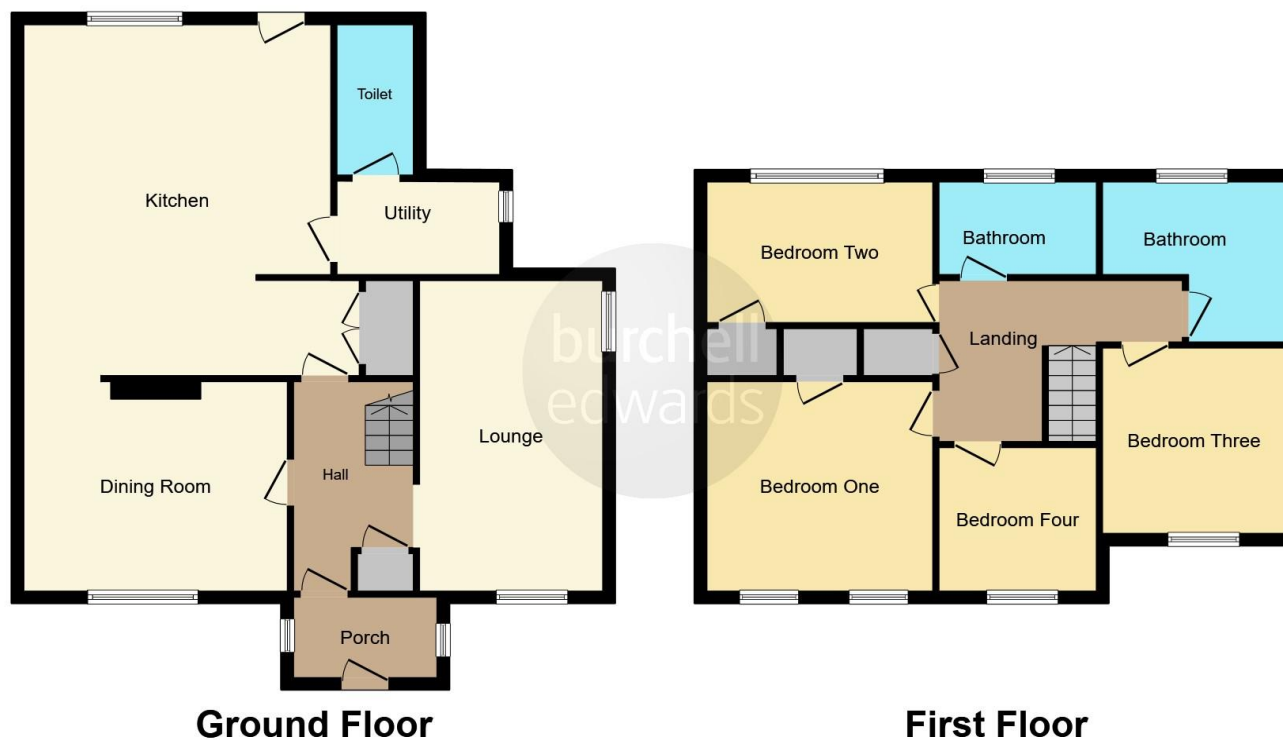
Ground Floor W.C

Double glazed window, W.C and tiled flooring.









This floor plan is for illustrative purposes only. It is not drawn to scale. Any measurements, floor areas (including any total floor area), openings and orientation are approximate. No details are guaranteed, they cannot be relied upon for any purpose and they do not form part of any agreement. No liability is taken for any error, omission or misstatement. A party must rely upon its own inspection(s). Powered by www.focalagent.com

To view this property please contact Burchell Edwards on

T 0121 742 1725
E sheldon@burchelledwards.co.uk

2208 Coventry Road Sheldon
 BIRMINGHAM B26 3JH

EPC Rating: D Council Tax
 Band: B

Tenure: Freehold

view this property online burchelledwards.co.uk/Property/SHL210543



1. MONEY LAUNDERING REGULATIONS Intending purchasers will be asked to produce identification documentation at a later stage and we would ask for your co-operation in order that there will be no delay in agreeing the sale. 2. These particulars do not constitute part or all of an offer or contract. 3. The measurements indicated are supplied for guidance only and as such must be considered incorrect. Potential buyers are advised to recheck measurements before committing to any expense. 4. We have not tested any apparatus, equipment, fixtures, fittings or services and it is in the buyers interest to check the working condition of any appliances.

Burchell Edwards is a trading name of Connells Residential which is registered in England and Wales under company number 1489613, Registered Office is Cumbria House, 16-20 Hockliffe Street, Leighton Buzzard, Bedfordshire, LU7 1GN. VAT Registration Number is 500 2481 05.

See all our properties at www.burchelledwards.co.uk | www.rightmove.co.uk | www.zoopla.co.uk

Property Ref: SHL210543 - 0006