



Coalway Avenue, Birmingham

Coalway Avenue, Birmingham B26 3JX

for sale offers over
£270,000



Property Description

FANTASTIC LOCATION! This Three Bedroom Extended Semi Detached is on a very popular road in Sheldon and close to transport routes and local amenities as well as BIRMINGHAM AIRPORT, M42 and approx. 15min from The City Centre this is a great first time buy or family home!

Entrance Hallway

Central heating radiators and under stairs storage cupboard.

Lounge

24' 6" x 9' 11" (7.47m x 3.02m)

Double glazed bay window to front elevation, double glazed sliding doors to rear elevation and central heating radiator.

Kitchen/ Diner

16' 2" max x 9' 11" max (4.93m max x 3.02m max)

L shaped room. Double glazed window and double doors to rear elevation, a range of wall and base units with work surface over incorporating a sink with drainer unit, gas hob, electric oven, cooker hood, space and plumbing for washing machine, spotlights, central heating radiator, central heating boiler and tiling to splash prone areas

Landing

Double glazed window to side elevation and loft access via hatch.

Bedroom One

13' 4" into bay x 10' max (4.06m into bay x 3.05m max)

Double glazed bay window to front elevation and central heating radiator.

Bedroom Two

10' 1" into bay x 13' 1" max (3.07m into bay x 3.99m max)

Double glazed bay window to rear elevation and central heating radiator.

Bedroom Three

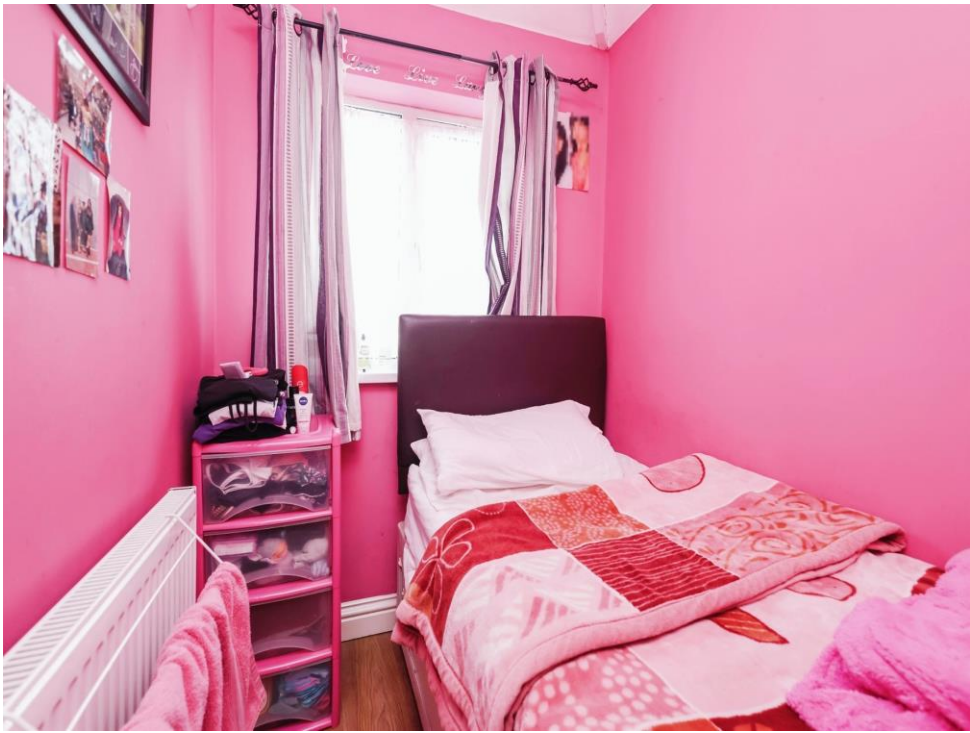
6' 7" x 5' 2" (2.01m x 1.57m)

Double glazed bay window to front elevation and central heating radiator.

Bathroom

Double glazed window to rear elevation, W.C, wash hand basin, bath with shower over and tiling to walls.









This floor plan is for illustrative purposes only. It is not drawn to scale. Any measurements, floor areas (including any total floor area), openings and orientation are approximate. No details are guaranteed, they cannot be relied upon for any purpose and they do not form part of any agreement. No liability is taken for any error, omission or misstatement. A party must rely upon its own inspection(s). Powered by www.focalagent.com

To view this property please contact Burchell Edwards on

T 0121 742 1725
E sheldon@burchelledwards.co.uk

2208 Coventry Road Sheldon
 BIRMINGHAM B26 3JH

EPC Rating: D

Tenure: Freehold

view this property online burchelledwards.co.uk/Property/SHL210357



1. MONEY LAUNDERING REGULATIONS Intending purchasers will be asked to produce identification documentation at a later stage and we would ask for your co-operation in order that there will be no delay in agreeing the sale. 2. These particulars do not constitute part or all of an offer or contract. 3. The measurements indicated are supplied for guidance only and as such must be considered incorrect. Potential buyers are advised to recheck measurements before committing to any expense. 4. We have not tested any apparatus, equipment, fixtures, fittings or services and it is in the buyers interest to check the working condition of any appliances.

Burchell Edwards is a trading name of Connells Residential which is registered in England and Wales under company number 1489613, Registered Office is Cumbria House, 16-20 Hockliffe Street, Leighton Buzzard, Bedfordshire, LU7 1GN. VAT Registration Number is 500 2481 05.

See all our properties at www.burchelledwards.co.uk | www.rightmove.co.uk | www.zoopla.co.uk

Property Ref: SHL210357 - 0007