



Swancote Road, Birmingham





Property Description

Introducing this three bedroom terraced home in Birmingham, perfect for a family seeking ample space and potential. Boasting three bedrooms, a lounge, kitchen to the rear, modern downstairs bathroom, expansive garden, and convenient driveway, this property offers everything a family could desire. Nestled in a prime location with excellent transport connections, nearby amenities, and local schools.

Entrance Hallway

Door to front elevation.

Lounge

12' x 13' 4" max (3.66m x 4.06m max)
Double glazed window to front elevation and gas fire.

Kitchen

6' 11" x 8' 10" (2.11m x 2.69m)
Double glazed window to rear elevation, a range of wall and base units with work surface over incorporating a sink with drainer unit, space and plumbing for washing machine, tiling to splash prone areas and pantry.



Bedroom One

18' 10" max x 10' (5.74m max x 3.05m)
Two double glazed windows to front elevation and built in storage cupboard.

Bedroom Two

11' x 9' 11" max (3.35m x 3.02m max)
Double glazed window to rear elevation.

Bedroom Three

8' 6" x 7' 10" (2.59m x 2.39m)
Double glazed window to rear elevation.

Shower Room

Shower cubicle with electric shower over, wash hand basin, tiling to walls and extractor fan.

W.C

Single glazed window to rear elevation and W.C.

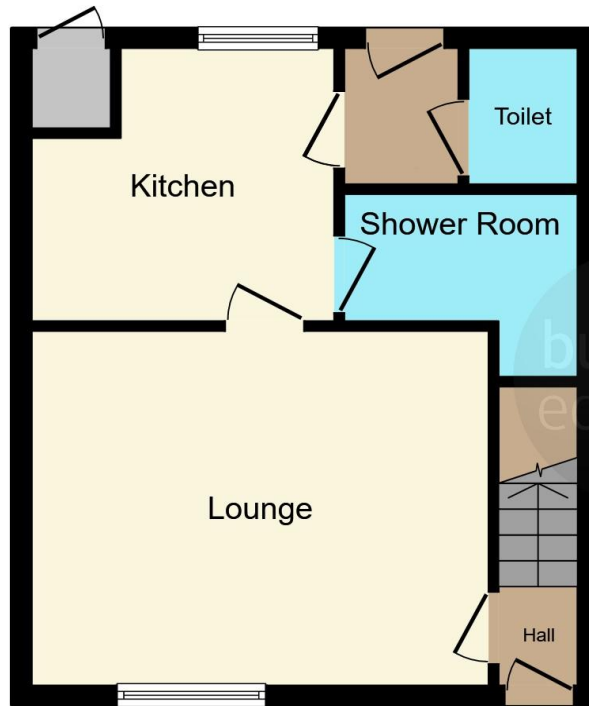
Rear Garden

Slabbed patio, laid to lawn and side access to frontage.

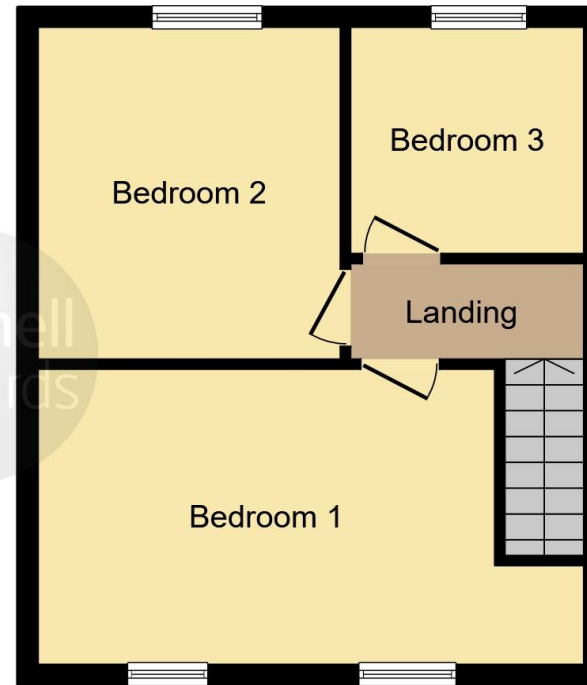








Ground Floor



First Floor

This floor plan is for illustrative purposes only. It is not drawn to scale. Any measurements, floor areas (including any total floor area), openings and orientation are approximate. No details are guaranteed, they cannot be relied upon for any purpose and they do not form part of any agreement. No liability is taken for any error, omission or misstatement. A party must rely upon its own inspection(s). Powered by www.focalagent.com

To view this property please contact Burchell Edwards on

T 0121 742 1725
E sheldon@burchelledwards.co.uk

2208 Coventry Road Sheldon
BIRMINGHAM B26 3JH

EPC Rating: E

Tenure: Freehold

view this property online burchelledwards.co.uk/Property/SHL210084



1. MONEY LAUNDERING REGULATIONS Intending purchasers will be asked to produce identification documentation at a later stage and we would ask for your co-operation in order that there will be no delay in agreeing the sale. 2. These particulars do not constitute part or all of an offer or contract. 3. The measurements indicated are supplied for guidance only and as such must be considered incorrect. Potential buyers are advised to recheck measurements before committing to any expense. 4. We have not tested any apparatus, equipment, fixtures, fittings or services and it is in the buyers interest to check the working condition of any appliances.

Burchell Edwards is a trading name of Connells Residential which is registered in England and Wales under company number 1489613, Registered Office is Cumbria House, 16-20 Hockliffe Street, Leighton Buzzard, Bedfordshire, LU7 1GN. VAT Registration Number is 500 2481 05.

See all our properties at www.burchelledwards.co.uk | www.rightmove.co.uk | www.zoopla.co.uk

Property Ref: SHL210084 - 0002