



Bellevue Road  
Birmingham







### Property Description

This THREE BEDROOM EXTENDED bungalow is in a great position on a popular road in SHELDON! Being bigger than most and having a garage to the side there is still potential to develop this property further. With good access to Birmingham International Airport, The M42, and Solihull. Call Now to view 0121 742 1725

### Entrance Porch

Double glazed door to front elevation, double glazed windows to front and side elevations.

### Entrance Hallway

Central heating radiator and loft access with drop down ladders.

### Lounge

14' x 19' 10" ( 4.27m x 6.05m )

Double glazed window and double doors to rear elevation, double glazed window to side elevation and two central heating radiators.

### Kitchen/ Diner

13' x 10' 2" ( 3.96m x 3.10m )

Double glazed window and door to side elevation, a range of wall and base units with work surface over incorporating a sink with drainer unit, gas hob, electric oven, cooker hood, tiling to splash prone areas, space and plumbing for washing machine, central heating boiler and central heating radiator.

## Bedroom One

13' 10" x 7' 9" into wardrobes ( 4.22m x 2.36m into wardrobes )

Double glazed window to rear elevation, central heating radiator and fitted wardrobes.

## Bedroom Two

7' 10" plus wardrobes x 11' 11" ( 2.39m plus wardrobes x 3.63m )

Double glazed window to front elevation, central heating radiator and fitted wardrobes.

## Bedroom Three

8' 11" x 8' 4" ( 2.72m x 2.54m )

Double glazed window to front elevation and central heating radiator.

## Bathroom

Shower cubicle, bath with electric shower over, wash hand basin, heated towel rail, tiling to walls and extractor fan.

## W.C

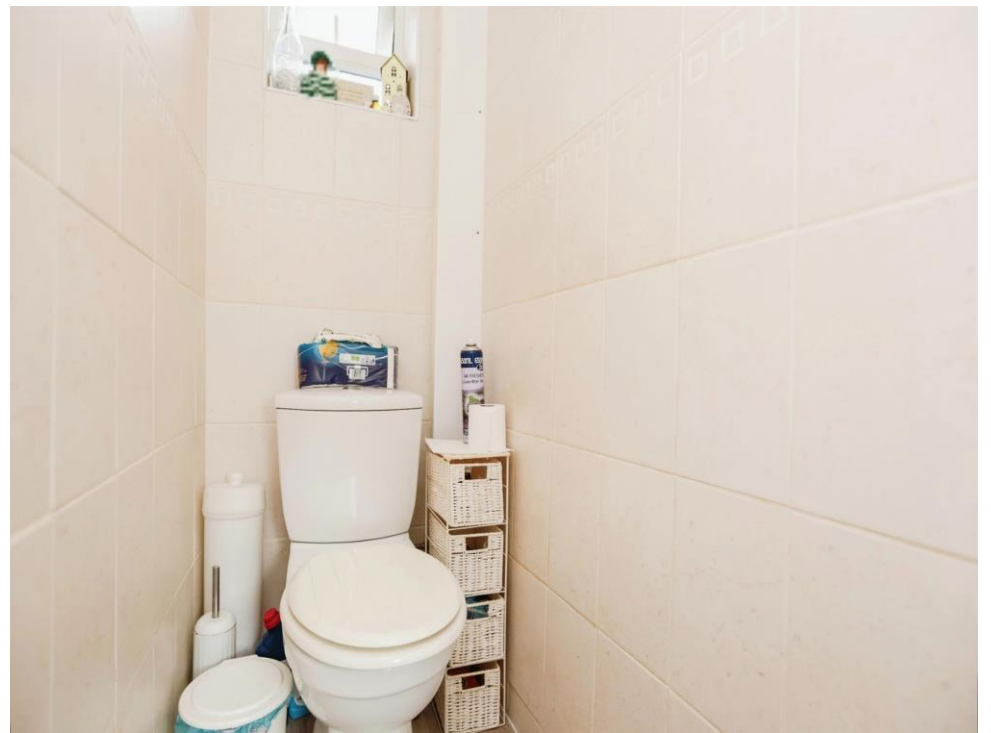
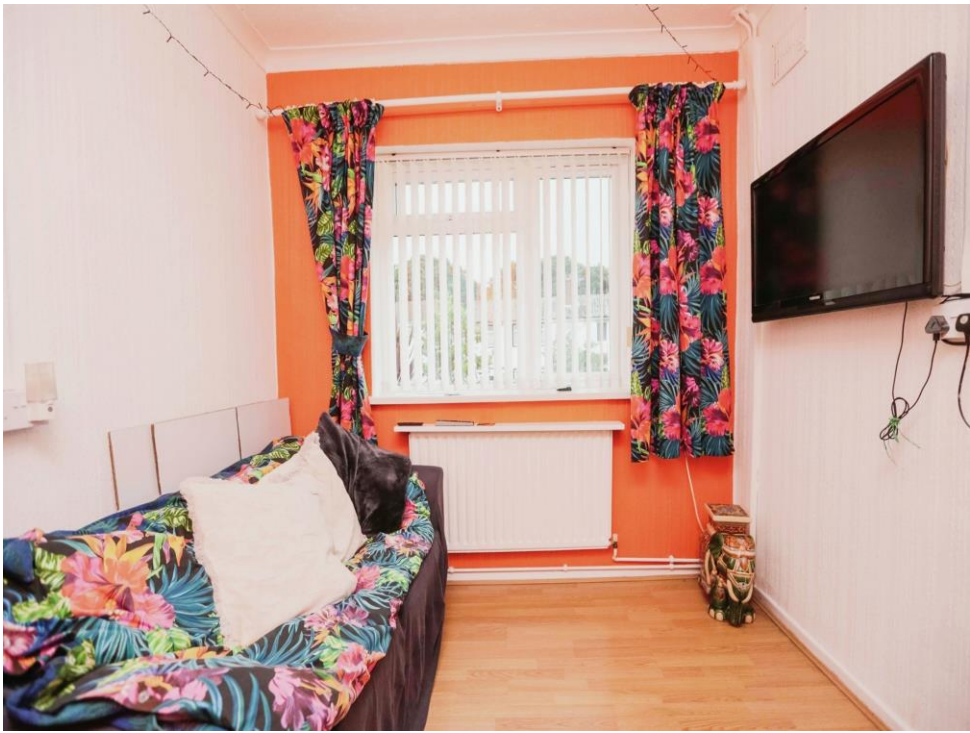
Double glazed window to side elevation, W.C and tiling to walls.

## Rear Garden

Mainly laid to lawn.













This floor plan is for illustrative purposes only. It is not drawn to scale. Any measurements, floor areas (including any total floor area), openings and orientation are approximate. No details are guaranteed, they cannot be relied upon for any purpose and they do not form part of any agreement. No liability is taken for any error, omission or misstatement. A party must rely upon its own inspection(s). Powered by [www.focalagent.com](http://www.focalagent.com)

To view this property please contact Burchell Edwards on

**T 0121 742 1725**  
**E [sheldon@burchelledwards.co.uk](mailto:sheldon@burchelledwards.co.uk)**

2208 Coventry Road Sheldon  
BIRMINGHAM B26 3JH

**EPC Rating: D**

Tenure: Freehold

**view this property online [burchelledwards.co.uk/Property/SHL210063](http://burchelledwards.co.uk/Property/SHL210063)**



1. MONEY LAUNDERING REGULATIONS Intending purchasers will be asked to produce identification documentation at a later stage and we would ask for your co-operation in order that there will be no delay in agreeing the sale. 2. These particulars do not constitute part or all of an offer or contract. 3. The measurements indicated are supplied for guidance only and as such must be considered incorrect. Potential buyers are advised to recheck measurements before committing to any expense. 4. We have not tested any apparatus, equipment, fixtures, fittings or services and it is in the buyers interest to check the working condition of any appliances.

Burchell Edwards is a trading name of Connells Residential which is registered in England and Wales under company number 1489613, Registered Office is Cumbria House, 16-20 Hockliffe Street, Leighton Buzzard, Bedfordshire, LU7 1GN. VAT Registration Number is 500 2481 05.

**See all our properties at [www.burchelledwards.co.uk](http://www.burchelledwards.co.uk) | [www.rightmove.co.uk](http://www.rightmove.co.uk) | [www.zoopla.co.uk](http://www.zoopla.co.uk)**

Property Ref: SHL210063 - 0002