



Chaffcombe Road, BIRMINGHAM





Property Description

THREE BEDROOM! This Semi detached is on a very popular road in SHELDON! With good size bedrooms as well as a LOUNGE and CONSERVATORY! Close to transport routes and shops this is a good FIRST TIME BUY or FMAILY HOME! CALL NOW ! 01217421725!

Entrance Hallway

Double glazed door to front elevation, double glazed window to rear elevation and central heating radiator.

Lounge

11' into bay x 15' 4" (3.35m into bay x 4.67m)
Double glazed window and bay window to front elevation and central heating radiator.

Kitchen

10' x 9' 4" (3.05m x 2.84m)
Double glazed window to rear elevation, a range of wall and base units with work surface over incorporating a sink with drainer unit, electric oven, gas hob, cooker hood, space and plumbing for washing machine and central heating radiator.

Conservatory

14' 11" x 8' 4" (4.55m x 2.54m)
Double glazed windows to rear elevation, central heating radiator and tiled flooring.

Landing

Double glazed window to side elevation and loft access.

Bedroom Two

9' 6" x 7' 11" (2.90m x 2.41m)

Double glazed window to rear elevation and central heating radiator.

Bedroom One

11' 4" x 10' 8" max (3.45m x 3.25m max)

Double glazed window to front elevation, central heating radiator and built in storage.

Bedroom Three

9' 5" max x 4' 5" max (2.87m max x 1.35m max)

Double glazed windows to front and side elevations and central heating radiator.

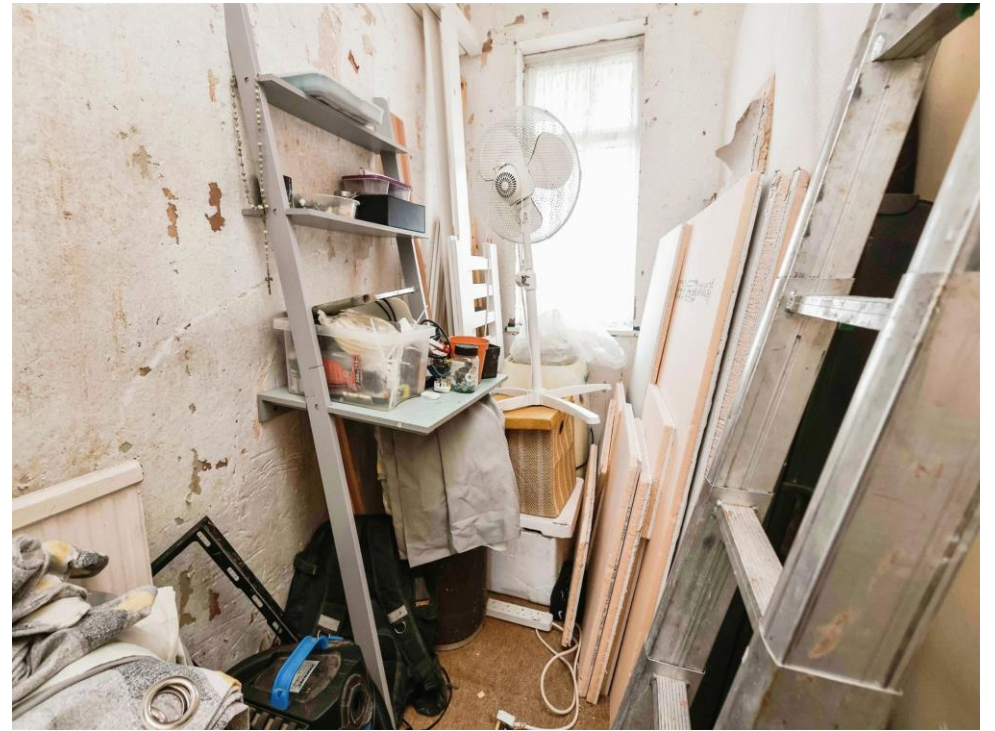
Shower Room

Double glazed window to rear elevation, wash hand basin, W.C, shower cubicle with electric shower, tiling to walls and central heating radiator.

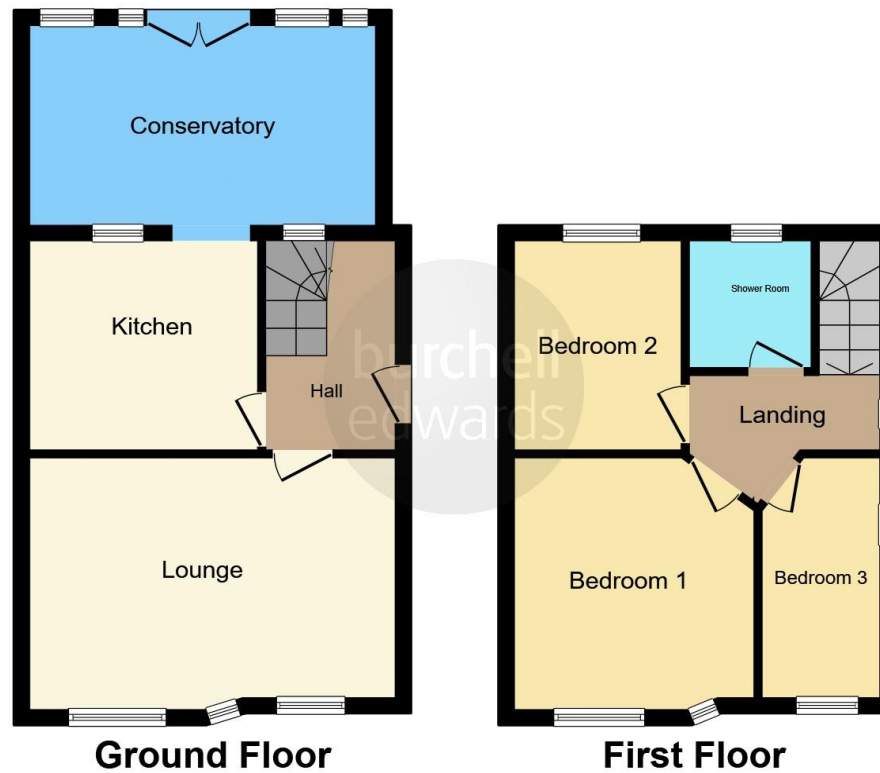
Rear Garden

Liaid lawn, slabbed patio and fencing to all boundaries.









This floor plan is for illustrative purposes only. It is not drawn to scale. Any measurements, floor areas (including any total floor area), openings and orientation are approximate. No details are guaranteed, they cannot be relied upon for any purpose and they do not form part of any agreement. No liability is taken for any error, omission or misstatement. A party must rely upon its own inspection(s). Powered by www.focalagent.com

To view this property please contact Burchell Edwards on

T 0121 742 1725
E sheldon@burchelledwards.co.uk

2208 Coventry Road Sheldon
 BIRMINGHAM B26 3JH

EPC Rating: D

Tenure: Freehold

view this property online burchelledwards.co.uk/Property/SHL209869



1. MONEY LAUNDERING REGULATIONS Intending purchasers will be asked to produce identification documentation at a later stage and we would ask for your co-operation in order that there will be no delay in agreeing the sale. 2. These particulars do not constitute part or all of an offer or contract. 3. The measurements indicated are supplied for guidance only and as such must be considered incorrect. Potential buyers are advised to recheck measurements before committing to any expense. 4. We have not tested any apparatus, equipment, fixtures, fittings or services and it is in the buyers interest to check the working condition of any appliances.

Burchell Edwards is a trading name of Connells Residential which is registered in England and Wales under company number 1489613, Registered Office is Cumbria House, 16-20 Hockliffe Street, Leighton Buzzard, Bedfordshire, LU7 1GN. VAT Registration Number is 500 2481 05.

See all our properties at www.burchelledwards.co.uk | www.rightmove.co.uk | www.zoopla.co.uk

Property Ref: SHL209869 - 0010