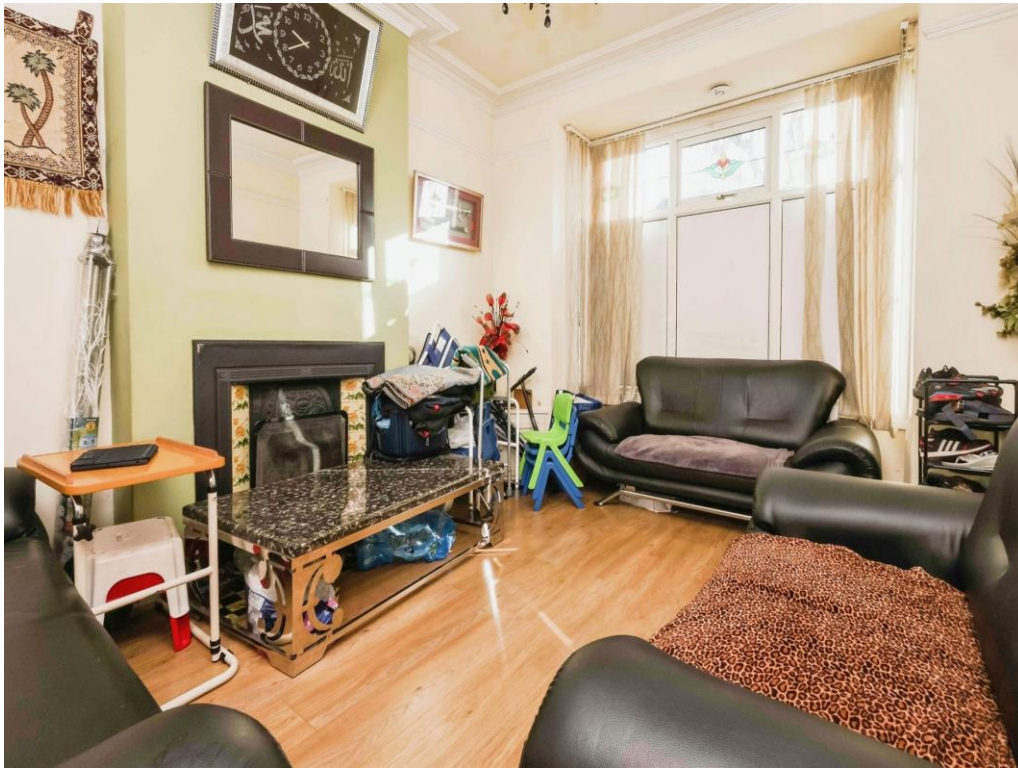




Flora Road, Birmingham



Property Description

FANTASTIC!! THREE GOOD SIZE DOUBLE BEDROOMS. This property is just perfect for someone looking to get on the ladder or needs to be in a location with links to BIRMINGHAM CITY CENTRE! Ready to move into with TWO RECEPTION ROOMS this will not be around for long so CALL NOW on 0121 742 1725!!!

Reception Room One

10' 11" x 14' 4" into bay (3.33m x 4.37m into bay)
Double glazed bay window to front elevation and central heating radiator.

Reception Room Two

11' 4" x 12' 3" (3.45m x 3.73m)
Double glazed window to rear elevation and central heating radiator.

Kitchen

11' 2" x 8' 11" (3.40m x 2.72m)
Double glazed window to side elevation, a range of wall and base units with work surface over incorporating a sink with drainer, space and connections for a cooker, space and plumbing for a washing machine and tiled to splash prone areas.

Bathroom

6' 6" x 6' 10" (1.98m x 2.08m)
Double glazed window to side elevation, bath with shower over, WC, wash hand basin, central heating radiator and tiling.



Bedroom One

16' 6" x 12' 4" (5.03m x 3.76m)

Two double glazed windows to front elevation and central heating radiator.

Bedroom Two

12' 3" x 12' 3" (3.73m x 3.73m)

Double glazed window to rear elevation and central heating radiator.

Bedroom Three

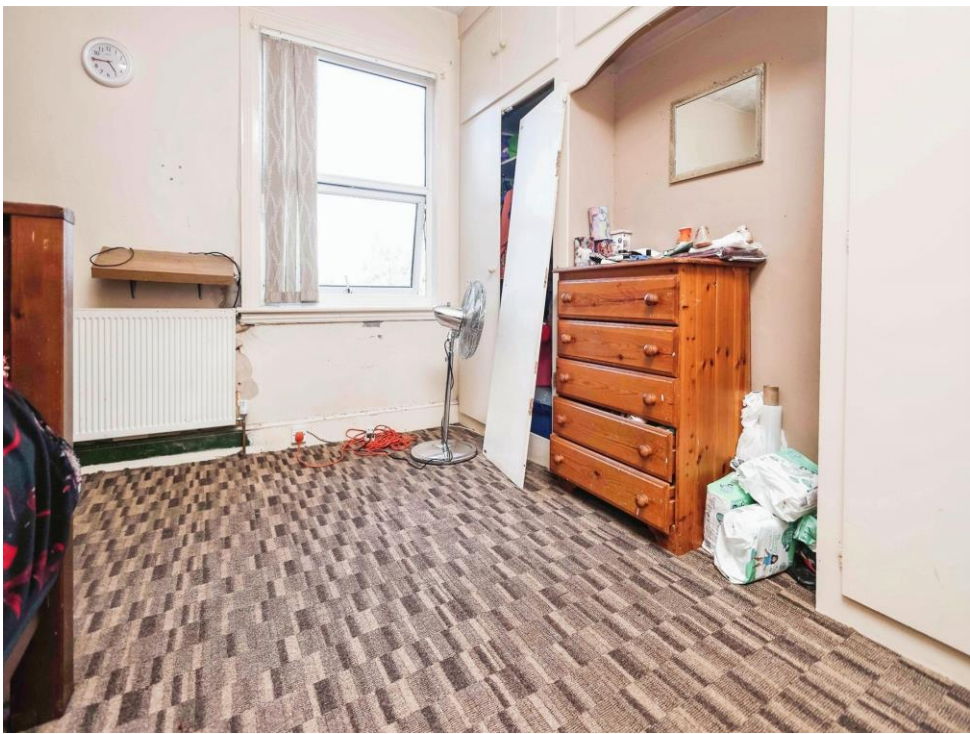
8' 10" x 11' 3" (2.69m x 3.43m)

Double glazed window to rear elevation and central heating radiator.

Garden

Paved rear garden with fence to boundaries.









This floorplan is for illustrative purposes only and is not drawn to scale. Measurements, floor-areas, openings and orientations are approximate. They should not be relied upon for any purpose and do not form any part of an agreement. No liability is taken for any error or mis-statement. All parties must rely on their own inspections.

To view this property please contact Burchell Edwards on

T 0121 742 1725
E sheldon@burchelledwards.co.uk

2208 Coventry Road Sheldon
 BIRMINGHAM B26 3JH

EPC Rating: D

Tenure: Freehold

view this property online burchelledwards.co.uk/Property/SHL209577



1. MONEY LAUNDERING REGULATIONS Intending purchasers will be asked to produce identification documentation at a later stage and we would ask for your co-operation in order that there will be no delay in agreeing the sale. 2. These particulars do not constitute part or all of an offer or contract. 3. The measurements indicated are supplied for guidance only and as such must be considered incorrect. Potential buyers are advised to recheck measurements before committing to any expense. 4. We have not tested any apparatus, equipment, fixtures, fittings or services and it is in the buyers interest to check the working condition of any appliances.

Burchell Edwards is a trading name of Connells Residential which is registered in England and Wales under company number 1489613, Registered Office is Cumbria House, 16-20 Hockliffe Street, Leighton Buzzard, Bedfordshire, LU7 1GN. VAT Registration Number is 500 2481 05.

See all our properties at www.burchelledwards.co.uk | www.rightmove.co.uk | www.zoopla.co.uk

Property Ref: SHL209577 - 0004