



Lyndon Road, Stechford Birmingham





Property Description

NO CHAIN! Set on a generous CORNER PLOT, this property offers scope to extend (subject to usual planning consents) and is an opportunity not to be missed. Ideally situated, the property is near to main road and rail links and with a selection of schools and amenities also close by, this is an ideal family home. Call now to view on 0121 742 1725

Lounge

12' x 10' 9" (3.66m x 3.28m)

Double glazed window to front elevation and central heating radiator.

Dining Room

14' 1" max x 15' 5" max (4.29m max x 4.70m max)

Double glazed door to rear elevation and central heating radiator.

Kitchen

5' 11" x 6' 5" (1.80m x 1.96m)

Double glazed window to rear elevation, double glazed door to side elevation, a range of wall and base units with work surface over incorporating a sink with drainer unit, plumbing for washing machine, part tiled walls and central heating boiler.

Landing

Double glazed window to side elevation, airing cupboard and central heating radiator.

Bedroom One

15' 6" x 10' (4.72m x 3.05m)

Double glazed window to rear elevation and central heating radiator.

Bedroom Two

9' 5" x 12' (2.87m x 3.66m)

Double glazed window to front elevation and central heating radiator.

Bedroom Three

9' 1" x 7' 7" (2.77m x 2.31m)

Double glazed window to front elevation and central heating radiator.

Bathroom

Double glazed window to rear elevation, shower cubicle with electric shower, W.C, wash hand basin and part tiled walls.

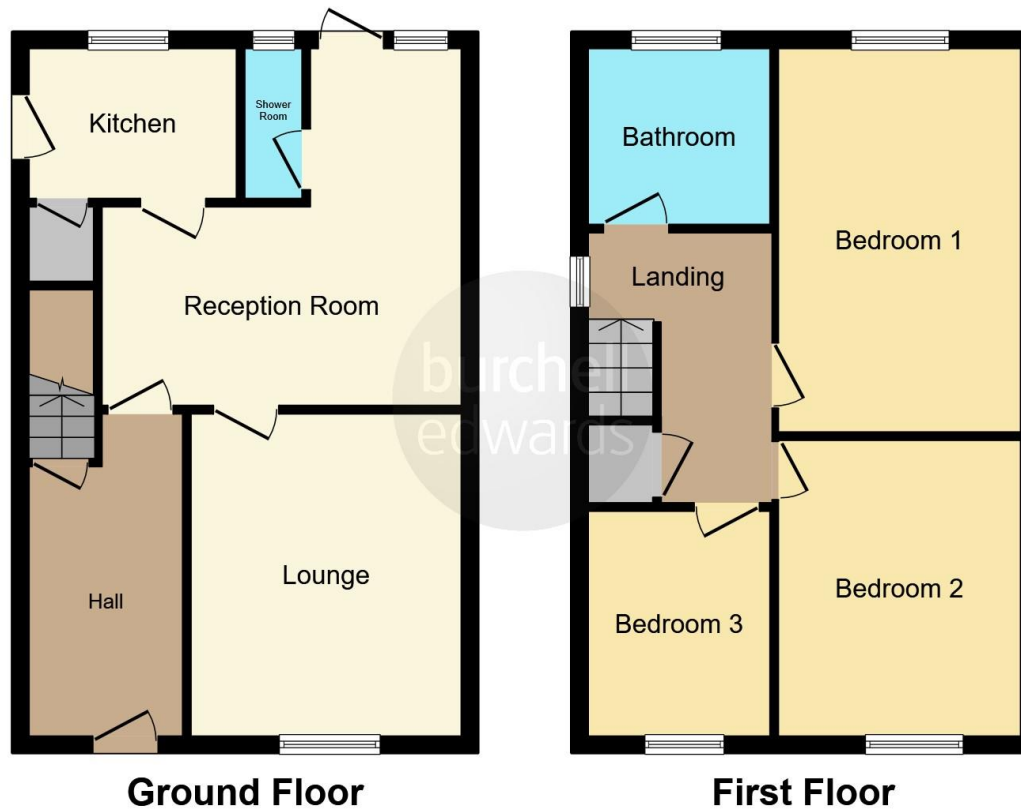
Rear Garden

Lawn and slabbed patio area.









This floorplan is for illustrative purposes only and is not drawn to scale. Measurements, floor-areas, openings and orientations are approximate. They should not be relied upon for any purpose and do not form any part of an agreement. No liability is taken for any error or mis-statement. All parties must rely on their own inspections.

To view this property please contact Burchell Edwards on

T 0121 742 1725
E sheldon@burchelledwards.co.uk

2208 Coventry Road Sheldon
 BIRMINGHAM B26 3JH

EPC Rating: D

Tenure: Freehold

view this property online burchelledwards.co.uk/Property/SHL209262



1. MONEY LAUNDERING REGULATIONS Intending purchasers will be asked to produce identification documentation at a later stage and we would ask for your co-operation in order that there will be no delay in agreeing the sale. 2. These particulars do not constitute part or all of an offer or contract. 3. The measurements indicated are supplied for guidance only and as such must be considered incorrect. Potential buyers are advised to recheck measurements before committing to any expense. 4. We have not tested any apparatus, equipment, fixtures, fittings or services and it is in the buyers interest to check the working condition of any appliances.

Burchell Edwards is a trading name of Connells Residential which is registered in England and Wales under company number 1489613, Registered Office is Cumbria House, 16-20 Hockliffe Street, Leighton Buzzard, Bedfordshire, LU7 1GN. VAT Registration Number is 500 2481 05.

See all our properties at www.burchelledwards.co.uk | www.rightmove.co.uk | www.zoopla.co.uk

Property Ref: SHL209262 - 0005