



Meadway, Birmingham





Property Description

WOW FIVE BEDROOMS! This sizeable mid terraced property is located close to transport routes and shops. This is great value for money and also being close to the HEARTLANDS HOSPITAL it will not be around for long so CALL NOW to book your viewing 0121 742 1725.

Approach

Large block paved driveway providing off road parking and double glazed double doors into:

Reception Porch

Double glazed window to side elevation, tiled floor and obscure double glazed door into:

Entrance Hallway

Stairs to first floor, under stairs storage, central heating, wood effect laminate flooring and cupboard housing meters.

Lounge

14' 3" x 12' 1" (4.34m x 3.68m)
Double glazed bow window to front elevation, wood effect laminate flooring, central heating radiator and open plan through into:

Dining Room

7' 8" x 9' 1" (2.34m x 2.77m)
Double glazed double doors opening into the conservatory, wood effect laminate flooring and central heating radiator.

Conservatory

11' 9" x 8' 10" (3.58m x 2.69m)
Of UPVC double glazed construction incorporating a door out to the rear garden, wood effect laminate flooring and central heating radiator.

Kitchen

12' 3" x 7' 6" (3.73m x 2.29m)

Double glazed window to rear elevation, obscure double glazed door into the utility, a range of wall and base units with work surface over incorporating a stainless steel sink with drainer, oven, gas hob, extractor hood over, glass splashback, tiled to splash prone areas and floor, space and plumbing for a dishwasher and central heating radiator.

Utility Room

6' 11" x 4' (2.11m x 1.22m)

Obscure double glazed door into the conservatory, space and plumbing for a washing machine, tiled floor and door into:

Shower Room

4' 10" x 6' 8" (1.47m x 2.03m)

Double glazed window to rear elevation, shower cubicle, floor to ceiling tiling, heated towel warmer, low level flush WC and hand wash basin with vanity storage,

Landing

Staircase leading to bedroom third floor.

Bedroom One

15' 11" x 12' 4" (4.85m x 3.76m)

Double glazed window to front elevation, wood effect laminate flooring and central heating radiator

Bedroom Two

15' 11" x 8' 9" (4.85m x 2.67m)

Double glazed window to rear elevation, wood effect laminate flooring and central heating radiator.

Bedroom Three

8' x 8' 5" (2.44m x 2.57m)

Double glazed window to front elevation, wood effect laminate flooring, over stairs storage and central heating radiator.

Bathroom

4' 11" x 7' 11" (1.50m x 2.41m)

Obscure double glazed window to rear elevation, panelled bath with shower over, low level flush WC, hand wash basin with vanity storage, floor to ceiling tiling and heated towel warmer.

Second Floor Landing

Velux window to rear elevation and doors off to:

Bedroom Four

16' 5" x 6' (5.00m x 1.83m)

Two double glazed Velux windows to rear elevation, wood effect laminate flooring, eaves storage and central heating radiator.

Bedroom Five

19' 3" x 5' 11" (5.87m x 1.80m)

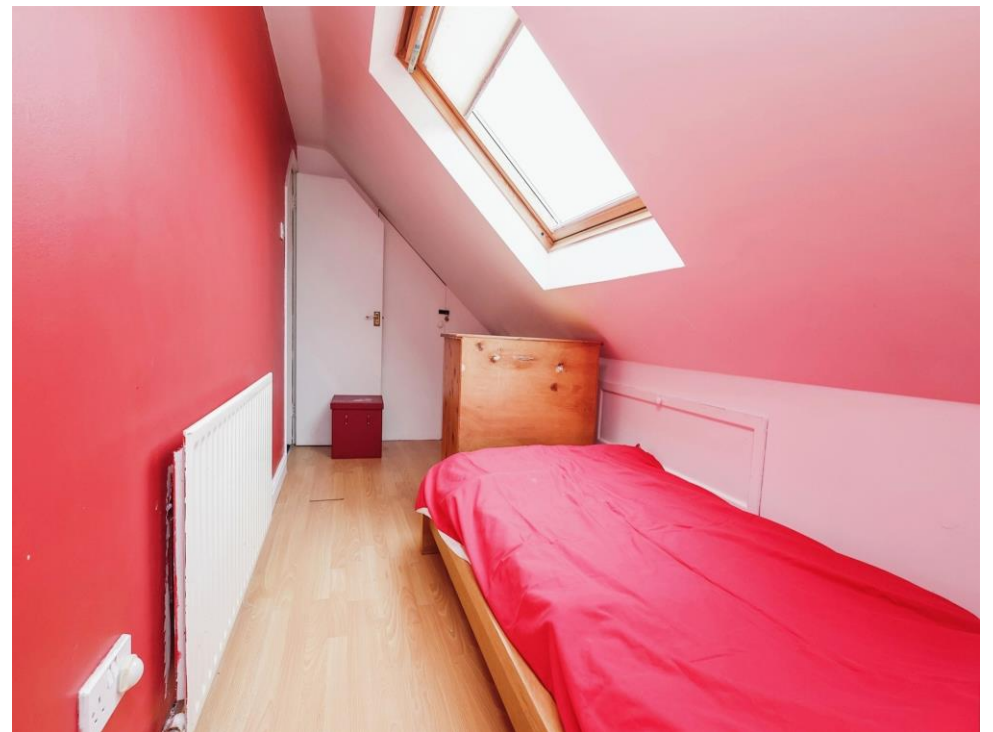
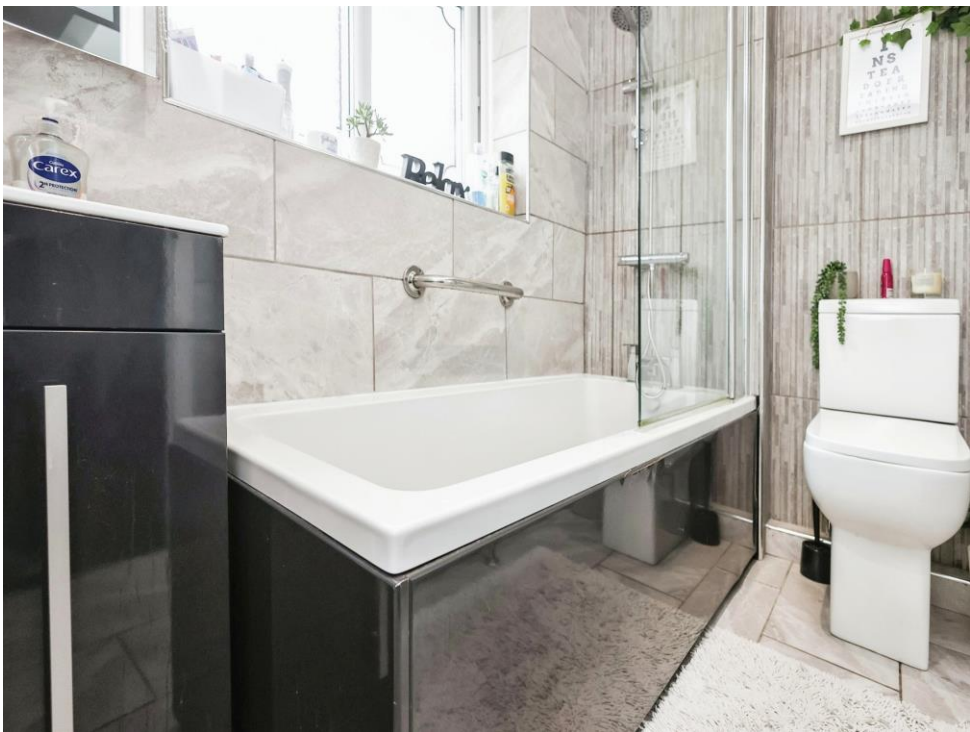
Two double glazed Velux windows to front elevation, wood effect laminate flooring and

central heating radiator.

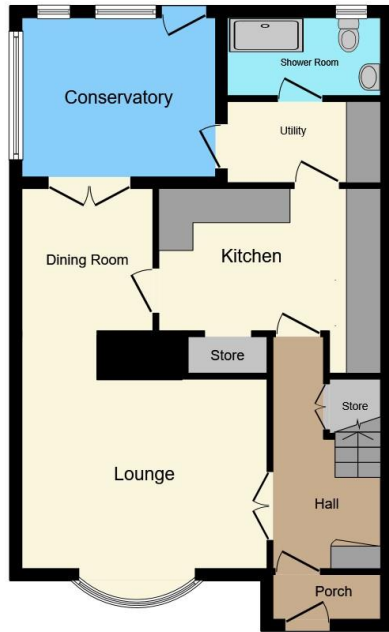
Garden

Block paved patio area, lawn, shared side access to the front of the property and fence to boundaries.

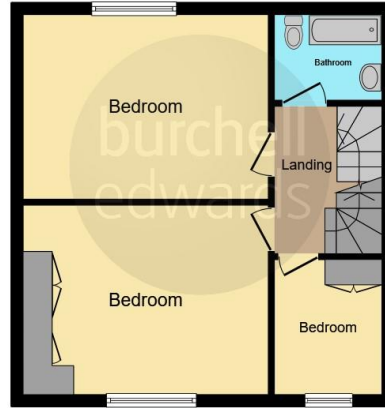




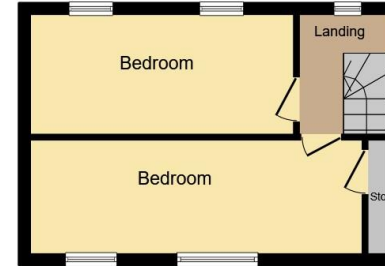




Ground Floor



First Floor



Second Floor

This floorplan is for illustrative purposes only and is not drawn to scale. Measurements, floor-areas, openings and orientations are approximate. They should not be relied upon for any purpose and do not form any part of an agreement. No liability is taken for any error or mis-statement. All parties must rely on their own inspections.

To view this property please contact Burchell Edwards on

T 0121 742 1725
E sheldon@burchelledwards.co.uk

2208 Coventry Road Sheldon
BIRMINGHAM B26 3JH

EPC Rating: D

Tenure: Freehold

view this property online burchelledwards.co.uk/Property/SHL204244



1. MONEY LAUNDERING REGULATIONS Intending purchasers will be asked to produce identification documentation at a later stage and we would ask for your co-operation in order that there will be no delay in agreeing the sale. 2. These particulars do not constitute part or all of an offer or contract. 3. The measurements indicated are supplied for guidance only and as such must be considered incorrect. Potential buyers are advised to recheck measurements before committing to any expense. 4. We have not tested any apparatus, equipment, fixtures, fittings or services and it is in the buyers interest to check the working condition of any appliances.

Burchell Edwards is a trading name of Connells Residential which is registered in England and Wales under company number 1489613, Registered Office is Cumbria House, 16-20 Hockliffe Street, Leighton Buzzard, Bedfordshire, LU7 1GN. VAT Registration Number is 500 2481 05.

See all our properties at www.burchelledwards.co.uk | www.rightmove.co.uk | www.zoopla.co.uk

Property Ref: SHL204244 - 0015