



Greenhill Lane  
Riddings Alfreton

burchell  
edwards

# Greenhill Lane Riddings Alfreton DE55 4AY

for sale  
**£175,000**



## Property Description

Burchell Edwards are delighted to welcome to the market this absolutely stunning two double bedroom, end of terrace on Greenhill Lane, Riddings. The current owners have undertaken considerable upgrades throughout, including a full re-wire, installing the new log burner, and moving the shower room upstairs while keeping a downstairs cloakroom/WC. The whole house has been redecorated to a fantastic standard, and the garden has been attractively landscaped. There are exciting features throughout, particularly the skylights over the kitchen which really give it wow factor!

To the ground floor there is the lounge, the dining room, the kitchen, the utility room, and the cloakroom/WC. To the first floor you will find the modern shower room and two large double bedrooms. Outside to the rear, the garden has a patio area, seating area, a lawn section, border for plants and shrubs and a garage with a gate leading to parking for two vehicles.

Viewings are highly recommended to fully appreciate this gorgeous home! Please call Burchell Edwards today for more information!

## Lounge

13' 6" Max x 11' 11" Into chimney breast ( 4.11m Max x 3.63m Into chimney breast )  
Having a log burner with brick surround, a radiator and ceiling light.

## Dining Room

13' 6" Max to chimney breast x 12' ( 4.11m Max to chimney breast x 3.66m )  
Having tiled flooring and a radiator.

## Kitchen

15' 9" x 7' 11" ( 4.80m x 2.41m )  
Fitted with wall and base units with work surfaces over, inset sink, splashback tiles, tiled flooring, spot lights, two sky lights and integrated dishwasher.

## Utility Room

9' 1" x 4' 11" ( 2.77m x 1.50m )  
Having a vertical radiator.

## Cloakroom

Having a low level W.C

## First Floor Landing

### Bedroom One

13' 6" Max into chimney breast x 11' 11" ( 4.11m Max into chimney breast x 3.63m )

Having wooden flooring, two radiators, two ceiling lights and UPVC windows to the rear and side elevation.

### Bedroom Two

11' 11" Max to chimney breast x 9' 10" ( 3.63m Max to chimney breast x 3.00m )

Having a radiator, ceiling light, UPVC window to the rear elevation and built-in wardrobe.

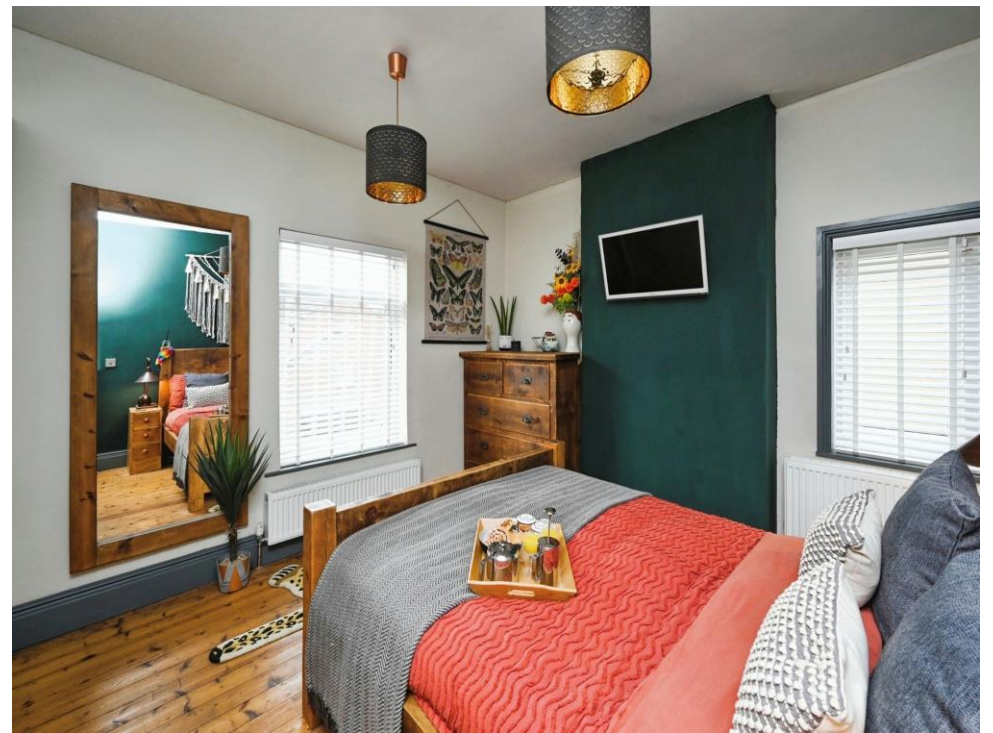
### Shower Room

Having a double walk-in shower, low level W.C, wash hand basin, vertical radiator and UPVC window to the rear elevation.

## Outside

To the rear the garden has a patio area, seating area, a lawn section, border for plants and shrubs and a garage with a gate leading to parking.









This floor plan is for illustrative purposes only. It is not drawn to scale. Any measurements, floor areas (including any total floor area), openings and orientation are approximate. No details are guaranteed, they cannot be relied upon for any purpose and they do not form part of any agreement. No liability is taken for any error, omission or misstatement. A party must rely upon its own inspection(s). Powered by [www.focalagent.com](http://www.focalagent.com)

To view this property please contact Burchell Edwards on

**T 01773 748807**  
**E [ripley@burchelledwards.co.uk](mailto:ripley@burchelledwards.co.uk)**

4 Grosvenor Road  
 RIPLEY DE5 3JF

**EPC Rating: G**

Tenure: Freehold

**check out more properties at [burchelledwards.co.uk](http://burchelledwards.co.uk)**



1. MONEY LAUNDERING REGULATIONS Intending purchasers will be asked to produce identification documentation at a later stage and we would ask for your co-operation in order that there will be no delay in agreeing the sale. 2. These particulars do not constitute part or all of an offer or contract. 3. The measurements indicated are supplied for guidance only and as such must be considered incorrect. Potential buyers are advised to recheck measurements before committing to any expense. 4. We have not tested any apparatus, equipment, fixtures, fittings or services and it is in the buyers interest to check the working condition of any appliances.

Burchell Edwards is a trading name of Connells Residential which is registered in England and Wales under company number 1489613, Registered Office is Cumbria House, 16-20 Hockliffe Street, Leighton Buzzard, Bedfordshire, LU7 1GN. VAT Registration Number is 500 2481 05.

**See all our properties at [www.burchelledwards.co.uk](http://www.burchelledwards.co.uk) | [www.rightmove.co.uk](http://www.rightmove.co.uk) | [www.zoopla.co.uk](http://www.zoopla.co.uk)**

Property Ref: RIP206640 - 0004