



Fell Wilson Grove  
Warsop Mansfield





# Fell Wilson Grove Warsop Mansfield NG20 0PU

for sale offers over  
**£150,000**



## Property Description

Three-Bedroom Semi-Detached Home - Fell Wilson Grove, Warsop

Nestled in a popular residential area, this three-bedroom semi-detached home on Fell Wilson Grove, Warsop, is a fantastic investment opportunity or an ideal purchase for first-time buyers. Offered with no onward chain, the property provides spacious accommodation and great potential.

The ground floor features a comfortable lounge, a well-sized kitchen, a lean-to, a conservatory, and a bathroom. Upstairs, there are three bedrooms, all benefitting from built-in wardrobes, along with access to a loft space for additional storage.

Externally, the property boasts a concrete driveway with space for up to four vehicles at the front. The rear garden is designed for easy maintenance, featuring a slabbed patio, a lawned area, and a shed for extra storage.

With its excellent location, practical layout, and great potential, this home is not to be missed. Contact us today to arrange a viewing!



## Entrance Hall

Entry via UPVC double-glazed door, finished with laminate flooring.

## Lounge

11' 10" into chimney breast x 16' 5" (3.61m into chimney breast x 5.00m)

The lounge comprises of double-glazed window to front, electric fire with surround, storage, wooden door to conservatory and carpeted flooring to finish.

## Kitchen

8' 4" x 12' 2" (2.54m x 3.71m)

The kitchen includes matching wall and base mounted units, stainless steel sink and drainer, two double-glazed windows to rear, wall mounted radiator, integrated fridge, gas hob, electric cooker hood and oven, understairs storage, and vinyl floor to finish.

## Family Bathroom

The bathroom, located on the ground floor, is finished with a ceramic toilet/sink, walk-in shower, double glazed window to front, wall mounted radiator, UPVC clad splashback, spotlights and laminate floor to finish.

## Lean To

3' 3" x 12' 1" (0.99m x 3.68m)

Brick base and build with double glazed window to rear and UPVC door to side.

## Conservatory

.7' 8" x 7' 8" (2.34m x 2.34m)

Wooden build on concrete base with sliding doors onto rear garden, UPVC double glazed windows to side and rear, tiled floor to finish.

## First Floor Landing

First floor landing with double-glazed window to rear, access to loft and laminate flooring to finish.

## Bedroom One

16' 5" x 8' 4" (5.00m x 2.54m)

The master bedroom comprising of double-glazed windows to front and rear, two wall mounted radiators, fitted wardrobes, boiler, with carpeted floor to finish.

## Bedroom Two

13' 2" into recess x 7' 6" into recess (4.01m into recess x 2.29m into recess)

Bedroom two includes double-glazed window to front, wall mounted radiator, fitted wardrobe, and carpeted floor to finish.

## Bedroom Three

8' 6" x 8' 11" (2.59m x 2.72m)

Bedroom three comprises of double-glazed window to rear, wall mounted radiator, wardrobes and carpeted floor to finish.

## Front Elevation

A concrete driveway with space for up to three vehicles, small, pebbled area and laid to lawn section, with fenced surround and gated access to the rear.

## Rear Elevation

The rear garden is low maintenance, with fenced surround and locked gate featuring a slabbed patio, lawned area, outside tap, light and shed.

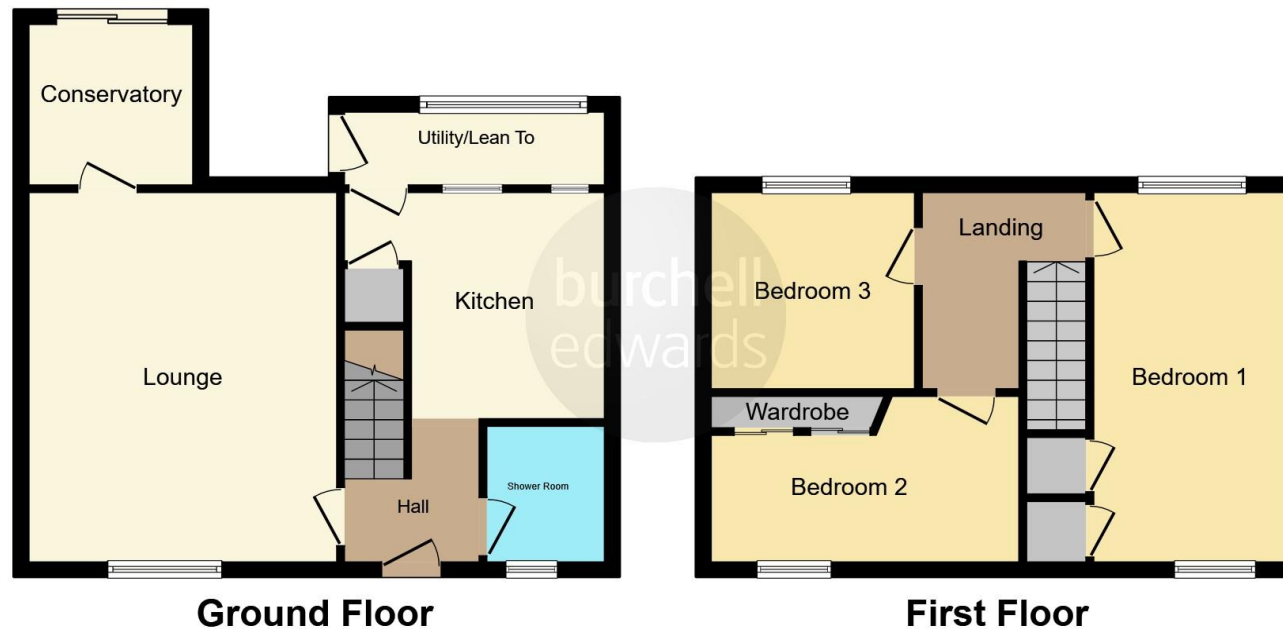












This floor plan is for illustrative purposes only. It is not drawn to scale. Any measurements, floor areas (including any total floor area), openings and orientation are approximate. No details are guaranteed, they cannot be relied upon for any purpose and they do not form part of any agreement. No liability is taken for any error, omission or misstatement. A party must rely upon its own inspection(s). Powered by [www.focalagent.com](http://www.focalagent.com)

To view this property please contact Burchell Edwards on

**T 01623 627727**  
**E [Mansfield@burchelledwards.co.uk](mailto:Mansfield@burchelledwards.co.uk)**

12 Albert Street  
 MANSFIELD NG18 1EB

EPC Rating: D Council Tax  
 Band: A

Tenure: Freehold

**view this property online [burchelledwards.co.uk/Property/MFD208912](http://burchelledwards.co.uk/Property/MFD208912)**



1. MONEY LAUNDERING REGULATIONS Intending purchasers will be asked to produce identification documentation at a later stage and we would ask for your co-operation in order that there will be no delay in agreeing the sale. 2. These particulars do not constitute part or all of an offer or contract. 3. The measurements indicated are supplied for guidance only and as such must be considered incorrect. Potential buyers are advised to recheck measurements before committing to any expense. 4. We have not tested any apparatus, equipment, fixtures, fittings or services and it is in the buyers interest to check the working condition of any appliances.

Burchell Edwards is a trading name of Connells Residential which is registered in England and Wales under company number 1489613, Registered Office is Cumbria House, 16-20 Hockliffe Street, Leighton Buzzard, Bedfordshire, LU7 1GN. VAT Registration Number is 500 2481 05.

**See all our properties at [www.burchelledwards.co.uk](http://www.burchelledwards.co.uk) | [www.rightmove.co.uk](http://www.rightmove.co.uk) | [www.zoopla.co.uk](http://www.zoopla.co.uk)**

Property Ref: MFD208912 - 0006