



Elkesley Road
Meden Vale Mansfield



burchell
edwards

Elkesley Road Meden Vale Mansfield NG20 9PS

for sale
£350,000

Property Description

Plot 4 - Four bedroom, detached house with; entrance hall, downstairs W.C, lounge, open plan kitchen living, utility room, three double bedrooms and one single bedrooms, dressing area and ensuite to master bedroom and fitted family bathroom. These plots are situated perfectly with easy access to the train station and the A60.

An exquisite new build development situated in the scenic semi-rural location of Meden Vale. This exclusive collection of homes includes a mix of 3 bedroom bungalows and 3 & 4-bedroom houses, that are both semi-detached and detached, each thoughtfully designed to offer contemporary comfort and style. Medan Vale Village enjoys excellent connectivity, making it an ideal location for commuters. The development is conveniently located near the A60 and A617 roads, providing straightforward access to Mansfield town center and the surrounding areas. Public transport options include a regular bus service that connects the village to Mansfield and other nearby towns. For those traveling further afield, Mansfield train station is 5 miles away. Families will appreciate the quality educational facilities in and around Medan Vale Village also.



Bedroom Three
Bedroom Four
Bathroom

Entrance Hall

Lounge

Kitchen Living

Utility Room

W.C

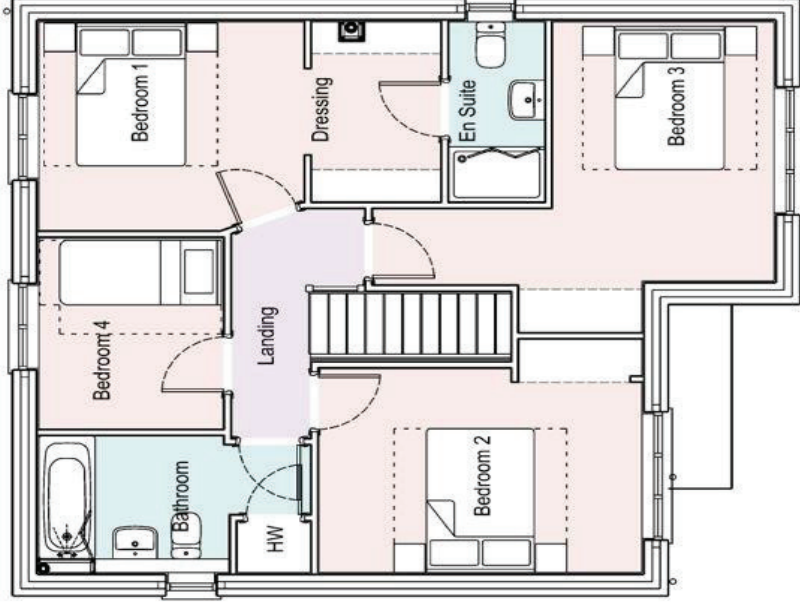
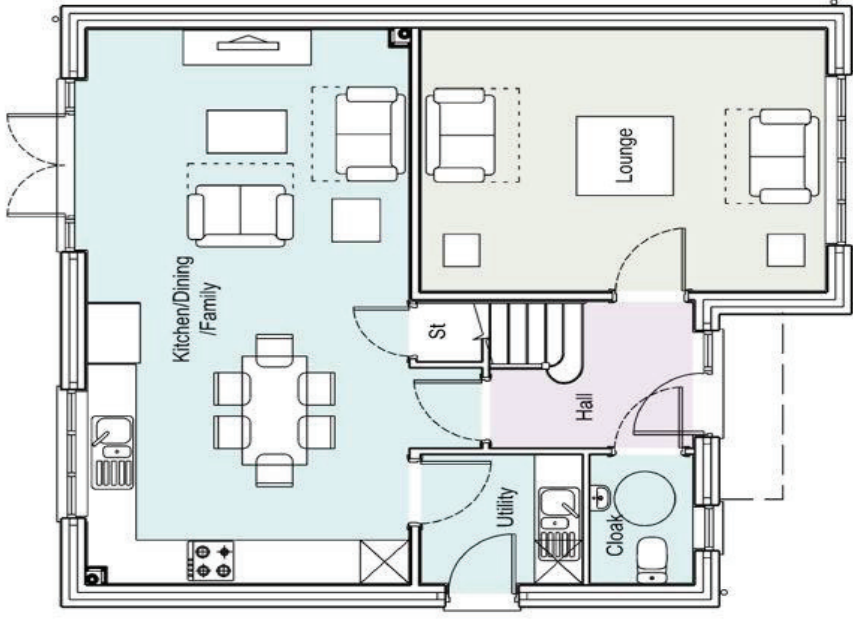
Landing

Bedroom One

Dressing Area

En-Suite

Bedroom Two



To view this property please contact Burchell Edwards on

T 01623 627727
E Mansfield@burchelledwards.co.uk

12 Albert Street
 MANSFIELD NG18 1EB

EPC Rating: Exempt

Tenure: Freehold

check out more properties at burchelledwards.co.uk



1. MONEY LAUNDERING REGULATIONS Intending purchasers will be asked to produce identification documentation at a later stage and we would ask for your co-operation in order that there will be no delay in agreeing the sale. 2. These particulars do not constitute part or all of an offer or contract. 3. The measurements indicated are supplied for guidance only and as such must be considered incorrect. Potential buyers are advised to recheck measurements before committing to any expense. 4. We have not tested any apparatus, equipment, fixtures or services and it is in the buyers interest to check the working condition of any appliances.

Burchell Edwards is a trading name of Connells Residential which is registered in England and Wales under company number 1488613. Registered Office is Cumbria House, 16-20 Hockliffe Street, Leighton Buzzard, Bedfordshire, LU7 1GN. VAT Registration Number is 500 2481 05.

See all our properties at www.burchelledwards.co.uk | www.rightmove.co.uk | www.zoopla.co.uk

Property Ref: MFD208555 - 0001