



Coronation Drive  
Shirebrook Mansfield



# Coronation Drive Shirebrook Mansfield NG20 8RH

for sale  
**£170,000**



## Property Description

We are pleased to bring to the market this well presented, two bedroom, semi-detached bungalows that sits in the heart of Shirebrook with great access to local amenities and road links. The property sits on a beautifully presented plot with front and rear gardens that are well maintained and offer great privacy.

In brief the property comprises of; entrance hall, lounge, fitted kitchen, two double bedrooms and a family bathroom. Externally you will find a large front and rear garden with a secure fenced boundary and presentable outlook!

A viewing is highly recommended to appreciate what is on offer! Call today to arrange a viewing!

## Entrance Hall

With UPVC door to the front elevation and laminate flooring.

## Lounge

11' 6" into recess plus bay window x 13' 1" plus recess ( 3.51m into recess plus bay window x 3.99m plus recess )

UPVC double glazed bay window to the front elevation, laminate flooring and radiator.

## Kitchen

9' 2" x 10' 6" ( 2.79m x 3.20m )

Fitted with matching wall and base units with work surfaces over that incorporates a stainless steel sink and drainer with mixer tap, integrated electric oven, electric hob and cooker-hood over, plumbing for washing machine, tiled splashbacks, boiler, vinyl flooring, pantry, two UPVC double glazed windows to the rear elevation and UPVC double glazed door to the side leading to the garden.

## Bedroom One

13' 1" x 13' 1" ( 3.99m x 3.99m )

UPVC double glazed window to the front elevation, laminate flooring and radiator.

## Bedroom Two

9' 2" x 9' 10" ( 2.79m x 3.00m )

UPVC double glazed window to the rear elevation, laminate flooring and radiator.

## Bathroom

Fitted with bath with mixer tap, pedestal wash hand basin, W.C, partly tiled splashbacks, vinyl flooring, loft access, radiator and UPVC double glazed opaque window to the rear elevation.

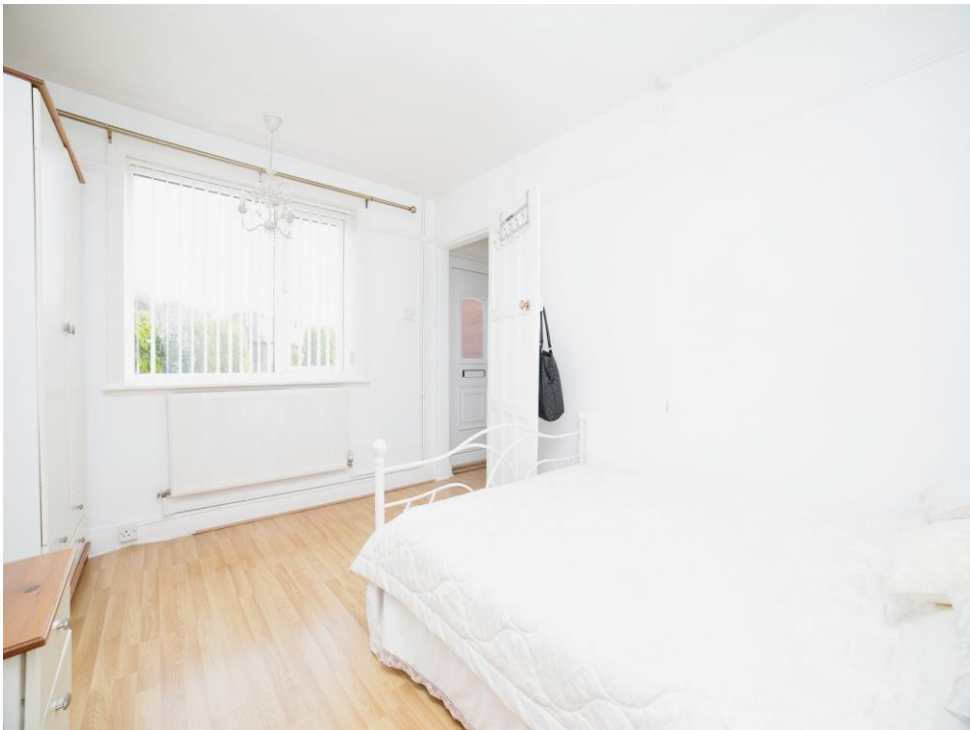
## Front

The property is set back from the road with a presentable front that is mainly laid to lawn with a secured fenced boundary and a range of; trees, bushes and shrubs along with side access leading to the rear garden.

## Rear

The rear of the property offers a beautiful enclosed garden with a range of plants, shrubs, trees and bushes along with seated patio area, flower bed boarders and a secure fenced boundary.







Grab a towel  
a bar of soap  
light a candle  
and enjoy  
soak...



This floorplan is for illustrative purposes only and is not drawn to scale. Measurements, floor-areas, openings and orientations are approximate. They should not be relied upon for any purpose and do not form any part of an agreement. No liability is taken for any error or mis-statement. All parties must rely on their own inspections.

To view this property please contact Burchell Edwards on

**T 01623 627727**  
**E Mansfield@burchelledwards.co.uk**

12 Albert Street  
MANSFIELD NG18 1EB

EPC Rating: D

Tenure: Freehold

**view this property online [burchelledwards.co.uk/Property/MFD208011](https://www.burchelledwards.co.uk/Property/MFD208011)**



1. MONEY LAUNDERING REGULATIONS Intending purchasers will be asked to produce identification documentation at a later stage and we would ask for your co-operation in order that there will be no delay in agreeing the sale. 2. These particulars do not constitute part or all of an offer or contract. 3. The measurements indicated are supplied for guidance only and as such must be considered incorrect. Potential buyers are advised to recheck measurements before committing to any expense. 4. We have not tested any apparatus, equipment, fixtures, fittings or services and it is in the buyers interest to check the working condition of any appliances.

Burchell Edwards is a trading name of Connells Residential which is registered in England and Wales under company number 1489613, Registered Office is Cumbria House, 16-20 Hockliffe Street, Leighton Buzzard, Bedfordshire, LU7 1GN. VAT Registration Number is 500 2481 05.

**See all our properties at [www.burchelledwards.co.uk](https://www.burchelledwards.co.uk) | [www.rightmove.co.uk](https://www.rightmove.co.uk) | [www.zoopla.co.uk](https://www.zoopla.co.uk)**

Property Ref: MFD208011 - 0006