



Ayre Road, Birmingham

burchell
edwards



Property Description

A well presented three bedroom semi detached family home in a very popular road in Erdington that offers fantastic space and 1930's style. This property benefits from off road parking, two separate reception rooms, three bedrooms, upstairs family bathroom, wide rear garden and so much more! Book your viewing with Burchell Edwards today!

Entrance Porch

Door to front elevation and tiled flooring.

Entrance Hallway

Central heating radiator, under stairs storage and stairs to first floor accommodation.

Lounge

14' 8" into bay x 11' 8" (4.47m into bay x 3.56m)
Double glazed bay window to front elevation, central heating radiator and carpet.

Dining Room

11' 11" x 10' 9" into max (3.63m x 3.28m into max)
Double glazed window to rear elevation, central heating radiator and carpet.

Kitchen

8' 6" x 6' 7" (2.59m x 2.01m)
Double glazed window to rear elevation, door to rear elevation, a range of wall and base units with work surface over incorporating a sink with drainer unit, tiling to splash prone areas and lino flooring.

Utility Room

7' 11" x 8' 2" (2.41m x 2.49m)
Door to rear elevation and concrete flooring.

Bedroom One

15' 1" into bay x 10' 8" into max (4.60m into bay x 3.25m into max)

Double glazed bay window to front elevation, carpet, central heating radiator and fitted wardrobes.

Bedroom Two

11' 11" x 10' 8" (3.63m x 3.25m)

Double glazed window to rear elevation, central heating radiator, carpet and fitted wardrobes.

Bedroom Three

7' 7" x 6' 7" (2.31m x 2.01m)

Double glazed window to rear elevation, central heating radiator and carpet.

Bathroom

Double glazed window to rear elevation, W.C, wash hand basin, bath with shower over, tiling to walls and central heating boiler.

Rear Garden

Patio area, lawned area, flower beds and fencing to boundaries.

Garage

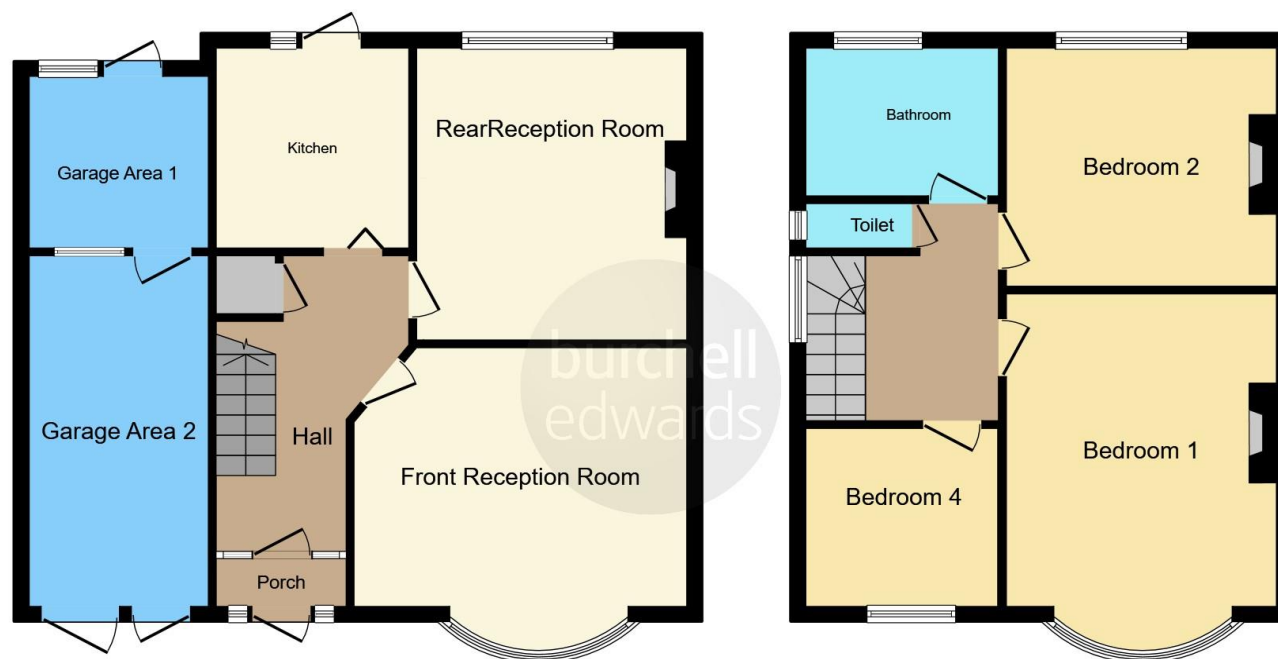
15' 5" x 8' 2" (4.70m x 2.49m)

Up and over door, power, lighting and concrete flooring.









Ground Floor

First Floor

This floor plan is for illustrative purposes only. It is not drawn to scale. Any measurements, floor areas (including any total floor area), openings and orientation are approximate. No details are guaranteed, they cannot be relied upon for any purpose and they do not form part of any agreement. No liability is taken for any error, omission or misstatement. A party must rely upon its own inspection(s). Powered by www.focalagent.com

To view this property please contact Burchell Edwards on

T 0121 373 6320
E erdington@burchelledwards.co.uk

Unit 3 Queens Court, Gravelly Hill Erdington
 BIRMINGHAM B23 6BJ

EPC Rating: E

Tenure: Freehold

view this property online burchelledwards.co.uk/Property/ERD207134



1. MONEY LAUNDERING REGULATIONS Intending purchasers will be asked to produce identification documentation at a later stage and we would ask for your co-operation in order that there will be no delay in agreeing the sale. 2. These particulars do not constitute part or all of an offer or contract. 3. The measurements indicated are supplied for guidance only and as such must be considered incorrect. Potential buyers are advised to recheck measurements before committing to any expense. 4. We have not tested any apparatus, equipment, fixtures, fittings or services and it is in the buyers interest to check the working condition of any appliances.

Burchell Edwards is a trading name of Connells Residential which is registered in England and Wales under company number 1489613, Registered Office is Cumbria House, 16-20 Hockliffe Street, Leighton Buzzard, Bedfordshire, LU7 1GN. VAT Registration Number is 500 2481 05.

See all our properties at www.burchelledwards.co.uk | www.rightmove.co.uk | www.zoopla.co.uk

Property Ref: ERD207134 - 0002