



Norfolk House Westland Close, Birmingham





Property Description

A Beautifully presented two double bedroom apartment that would be an ideal first time buy or investment buy to let! The accommodation comprises entrance hall, lounge/diner, fitted kitchen, two bedrooms and a family bathroom, spacious lounge, With garage in separate block, great amenities, commuter routes on your door step and many other fantastic benefits, this could be the ideal property for you!!

Entrance Hallway

Timber door to front elevation and two storage cupboards.

Lounge

15' 1" x 11' (4.60m x 3.35m)

Double glazed windows to side and rear elevations, carpet and two central heating radiators.

Kitchen

11' 9" x 6' 11" (3.58m x 2.11m)

Double glazed window to rear elevation, a range of wall and base units with work surface over incorporating a sink with drainer unit, cooker, hob and tiled flooring.



Bedroom One

11' 11" x 10' (3.63m x 3.05m)

Double glazed window to rear elevation, carpet, central heating radiator and central heating boiler.

Bedroom Two

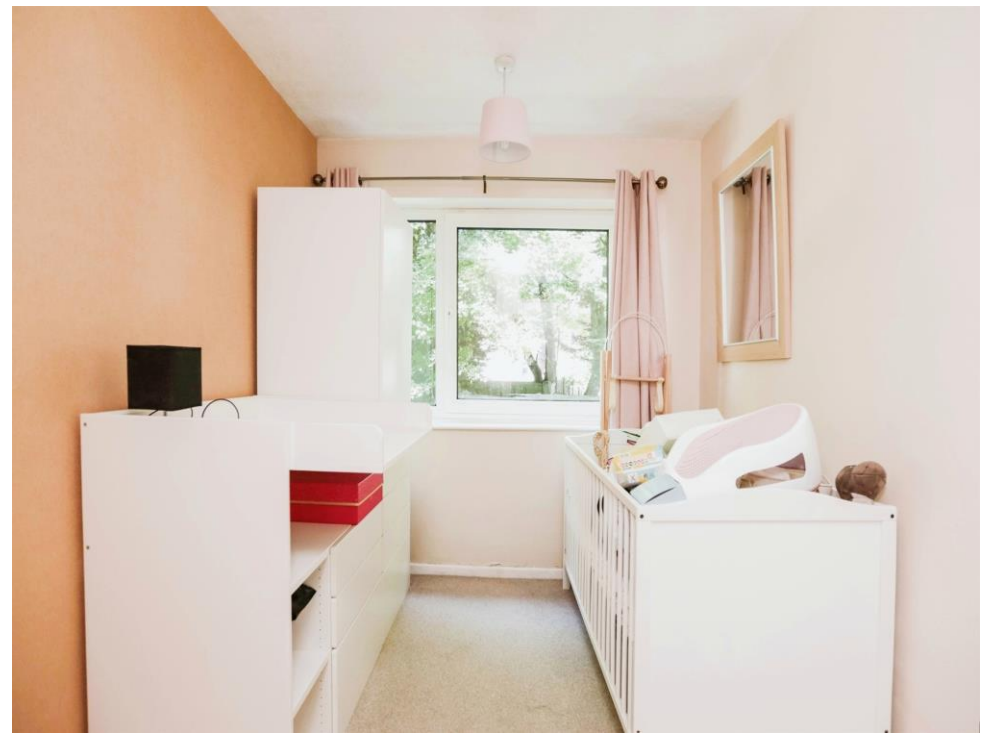
11' 11" x 7' 5" (3.63m x 2.26m)

Double glazed window to rear elevation, carpet, central heating radiator and storage.

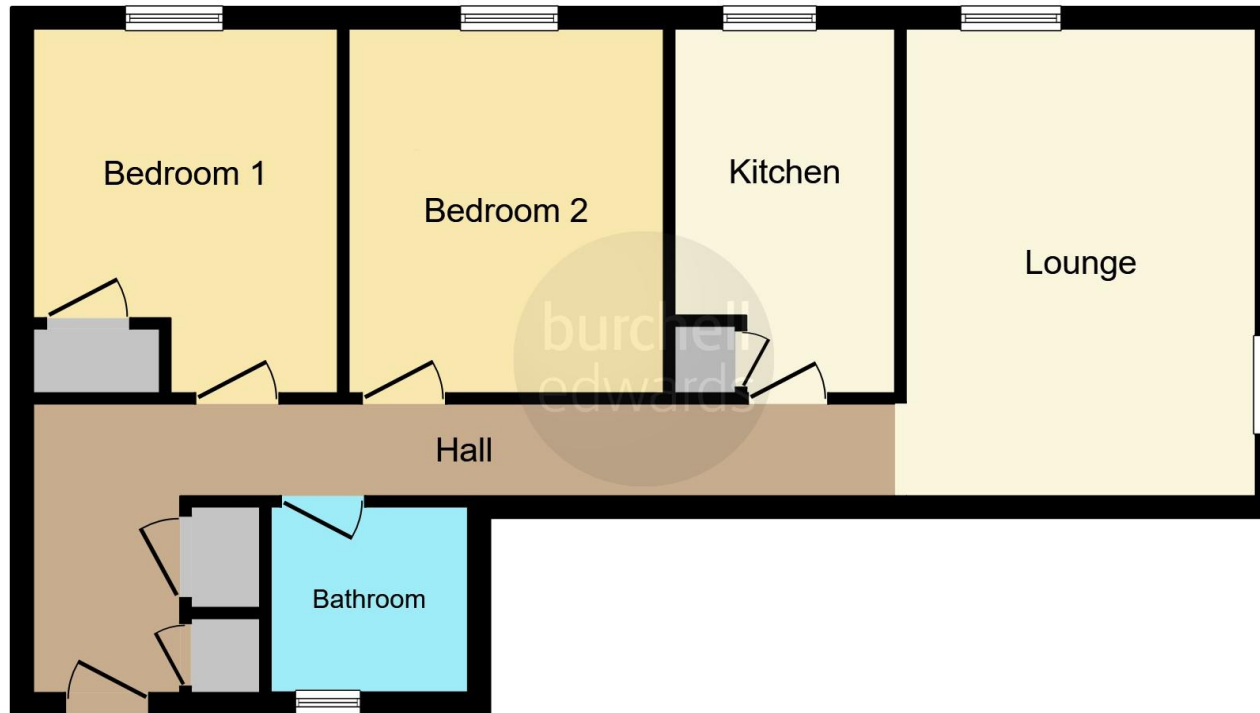
Bathroom

W.C, wash hand basin, tiling to walls and extractor.









This floor plan is for illustrative purposes only. It is not drawn to scale. Any measurements, floor areas (including any total floor area), openings and orientation are approximate. No details are guaranteed, they cannot be relied upon for any purpose and they do not form part of any agreement. No liability is taken for any error, omission or misstatement. A party must rely upon its own inspection(s). Powered by www.focalagent.com

To view this property please contact Burchell Edwards on

T 0121 373 6320
E erdington@burchelledwards.co.uk

Unit 3 Queens Court, Gravelly Hill Erdington
BIRMINGHAM B23 6BJ

EPC Rating: B

Tenure: Leasehold

view this property online burchelledwards.co.uk/Property/ERD206625

This is a Leasehold property. We are awaiting further details about the Term of the lease. For further information please contact the branch. Please note additional fees could be incurred for items such as Leasehold packs.



1. MONEY LAUNDERING REGULATIONS Intending purchasers will be asked to produce identification documentation at a later stage and we would ask for your co-operation in order that there will be no delay in agreeing the sale. 2. These particulars do not constitute part or all of an offer or contract. 3. The measurements indicated are supplied for guidance only and as such must be considered incorrect. Potential buyers are advised to recheck measurements before committing to any expense. 4. We have not tested any apparatus, equipment, fixtures, fittings or services and it is in the buyers interest to check the working condition of any appliances.

Burchell Edwards is a trading name of Connells Residential which is registered in England and Wales under company number 1489613, Registered Office is Cumbria House, 16-20 Hockliffe Street, Leighton Buzzard, Bedfordshire, LU7 1GN. VAT Registration Number is 500 2481 05.

See all our properties at www.burchelledwards.co.uk | www.rightmove.co.uk | www.zoopla.co.uk

Property Ref: ERD206625 - 0003