



Round Road, Birmingham





Property Description

The property comprises of an entrance hall, front living room with bay window, kitchen, family bathroom with bath and shower, W-C and wash basin, to the rear of the property is a large family garden. On the first floor are three good sized bedrooms. Viewing is highly recommended.

Entrance Porch

Door to front elevation.

Lounge

15' 10" into bay x 13' 9" into recess (4.83m into bay x 4.19m into recess)

Double glazed bay window to front elevation, carpet and storage cupboard.

Kitchen

8' 4" x 7' 6" (2.54m x 2.29m)

Double glazed window to rear elevation, door to rear elevation, a range of wall and base units with work surface over incorporating a sink with drainer unit, integrated cooker and hob and tiling to splash prone areas.



Bedroom One

12' 11" x 8' 9" (3.94m x 2.67m)

Double glazed window to rear elevation, carpet, central heating radiator and storage cupboard.

Bedroom Two

11' x 8' (3.35m x 2.44m)

Double glazed window to front elevation, carpet and central heating radiator.

Bedroom Three

9' 2" x 7' 6" (2.79m x 2.29m)

Double glazed window to front elevation, central heating radiator and carpet.

Bathroom

Double glazed window to rear elevation, wash hand basin, W.C, shower over bath and tiling to walls.

Front Garden

Pebbled frontage.

Rear Garden

Slabbed patio, laid lawn, storage shed and pathway.

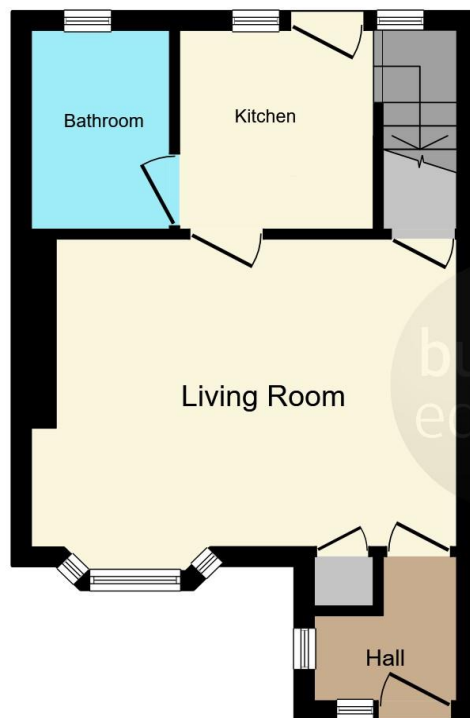
Agents Note

We have been unable to verify material information that relates to this property. If there is any point which is of particular importance to you, please contact the branch and we will endeavour to check for you, especially if you are contemplating travelling some distance to view the property. We ask that buyers make their own enquiries and satisfy themselves in regards to any specific requirements before proceeding.

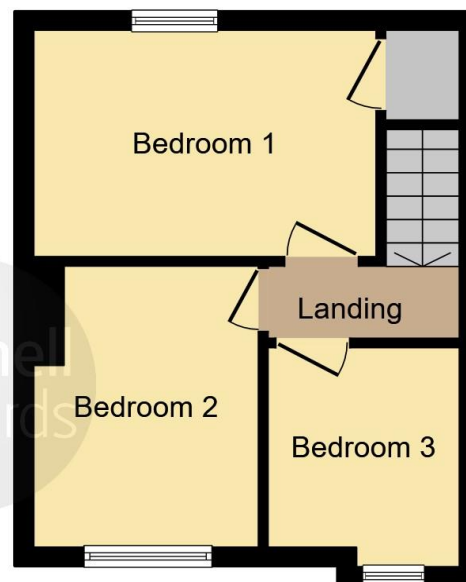








Ground Floor



First Floor

This floor plan is for illustrative purposes only. It is not drawn to scale. Any measurements, floor areas (including any total floor area), openings and orientation are approximate. No details are guaranteed, they cannot be relied upon for any purpose and they do not form part of any agreement. No liability is taken for any error, omission or misstatement. A party must rely upon its own inspection(s). Powered by www.focalagent.com

To view this property please contact Burchell Edwards on

T 0121 373 6320
E erdington@burchelledwards.co.uk

Unit 3 Queens Court, Gravelly Hill Erdington
BIRMINGHAM B23 6BJ

EPC Rating: C

Tenure: Freehold

view this property online burchelledwards.co.uk/Property/ERD206479



1. MONEY LAUNDERING REGULATIONS Intending purchasers will be asked to produce identification documentation at a later stage and we would ask for your co-operation in order that there will be no delay in agreeing the sale. 2. These particulars do not constitute part or all of an offer or contract. 3. The measurements indicated are supplied for guidance only and as such must be considered incorrect. Potential buyers are advised to recheck measurements before committing to any expense. 4. We have not tested any apparatus, equipment, fixtures, fittings or services and it is in the buyers interest to check the working condition of any appliances.

Burchell Edwards is a trading name of Connells Residential which is registered in England and Wales under company number 1489613, Registered Office is Cumbria House, 16-20 Hockliffe Street, Leighton Buzzard, Bedfordshire, LU7 1GN. VAT Registration Number is 500 2481 05.

See all our properties at www.burchelledwards.co.uk | www.rightmove.co.uk | www.zoopla.co.uk

Property Ref: ERD206479 - 0007