



Somerset Road, Erdington Birmingham





Property Description

A well presented three bedroom end terrace family home where viewing is considered essential to appreciate the size of accommodation on offer. In brief the accommodation comprises hallway, spacious lounge, modernised kitchen diner, three well proportioned bedrooms and family bathroom. The property benefits from double glazing & central heating. Generous double driveway to front with a large rear garden.

Entrance Porch

Door to front elevation.

Entrance Hallway

Three under stairs storage cupboards.

Lounge

13' 1" x 11' 5" (3.99m x 3.48m)

Double glazed bay window to front elevation and wooden flooring.

Kitchen/ Diner

17' 11" x 13' 1" (5.46m x 3.99m)

Double glazed french doors to rear elevation, a range of wall and base units with work surface over incorporating a sink with drainer unit, integrated oven, hob, extractor and fridge freezer, central heating radiator, wooden flooring and tiling to splash prone areas.



Landing

Doors off to:

Bedroom One

11' 1" x 13' 3" (3.38m x 4.04m)

Double glazed window to rear elevation, central heating radiator and carpet.

Bedroom Two

11' 5" x 10' 10" (3.48m x 3.30m)

Double glazed window to front elevation and central heating radiator.

Bedroom Three

10' 5" x 8' 7" (3.17m x 2.62m)

Double glazed window to rear elevation and central heating radiator.

Bathroom

shower over bath, wash hand basin, central heating radiator, W.C and lino flooring.

Front Garden

Driveway with off road parking.

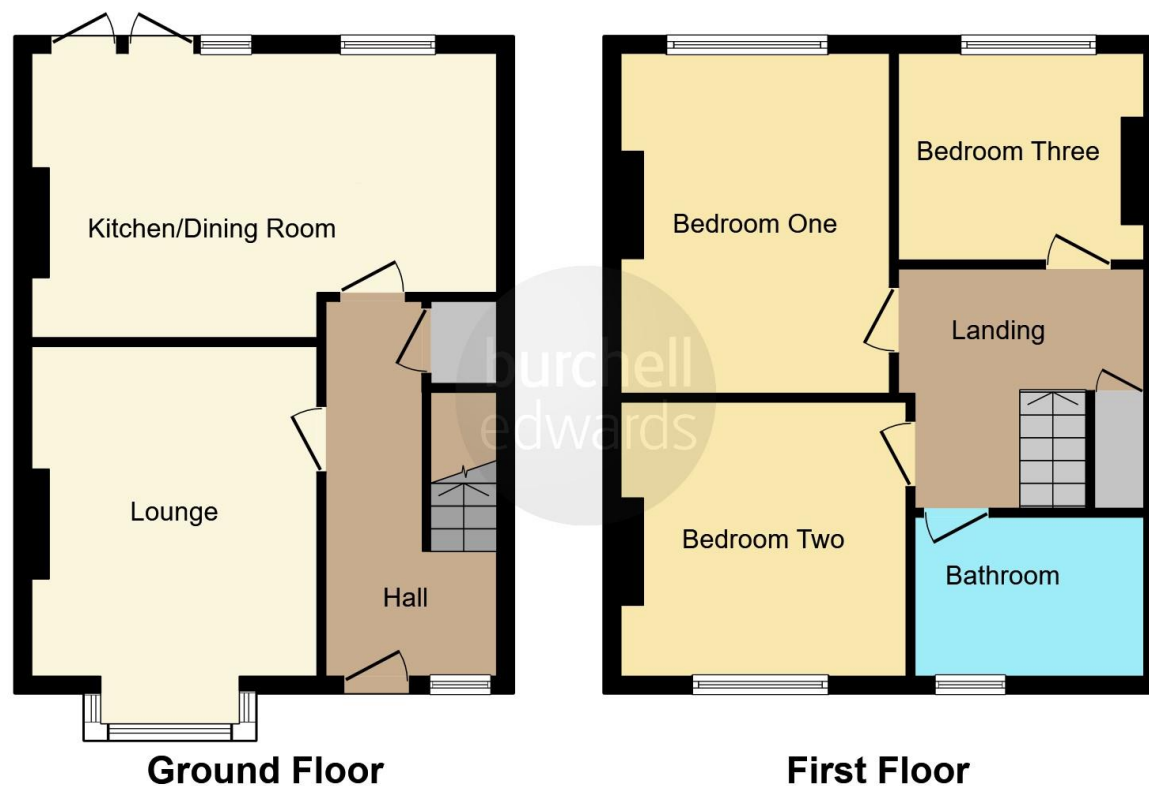
Rear Garden

landscaped garden with lawn to rear and a stone slab path through middle









This floor plan is for illustrative purposes only. It is not drawn to scale. Any measurements, floor areas (including any total floor area), openings and orientation are approximate. No details are guaranteed, they cannot be relied upon for any purpose and they do not form part of any agreement. No liability is taken for any error, omission or misstatement. A party must rely upon its own inspection(s). Powered by www.focalagent.com

To view this property please contact Burchell Edwards on

T 0121 373 6320
E erdington@burchelledwards.co.uk

Unit 3 Queens Court, Gravelly Hill Erdington
 BIRMINGHAM B23 6BJ

EPC Rating: D

Tenure: Freehold

view this property online burchelledwards.co.uk/Property/ERD206326



1. MONEY LAUNDERING REGULATIONS Intending purchasers will be asked to produce identification documentation at a later stage and we would ask for your co-operation in order that there will be no delay in agreeing the sale. 2. These particulars do not constitute part or all of an offer or contract. 3. The measurements indicated are supplied for guidance only and as such must be considered incorrect. Potential buyers are advised to recheck measurements before committing to any expense. 4. We have not tested any apparatus, equipment, fixtures, fittings or services and it is in the buyers interest to check the working condition of any appliances.

Burchell Edwards is a trading name of Connells Residential which is registered in England and Wales under company number 1489613, Registered Office is Cumbria House, 16-20 Hockliffe Street, Leighton Buzzard, Bedfordshire, LU7 1GN. VAT Registration Number is 500 2481 05.

See all our properties at www.burchelledwards.co.uk | www.rightmove.co.uk | www.zoopla.co.uk

Property Ref: ERD206326 - 0005