



Grandfield Street  
Loscoe Heanor





# Grandfield Street Loscoe Heanor DE75 7LS

for sale offers in the region of  
**£270,000**



## Property Description

We are excited to present to market this beautifully done property. A great sized family home in a commuters location, this spacious THREE bedroom semi detached house offers modern but traditional living. Standing back from the road with access via a side drive to the main door this property briefly comprises of; an attractive lounge dining room, kitchen, utility room and downstairs bathroom. To the first floor; there are three good sized bedrooms and a family shower room. To the outside of the property is a generously sized garden which is maturely planted with the exception of an allotment area and paved seating area, as well as a detached garage with power & lighting and great for storage. The property benefits from UPVC double glazing throughout as well as being gas centrally heated throughout.

## Kitchen

Situated from the side door you enter the kitchen which comprises of a variety of matching wall and base units with counter tops over , sink and drainer unit, integrated oven and hobs, plumbing for washing machine , dishwasher , space for fridge freezer , upvc window to the rear elevation and tiled flooring and doors to the lounge and stairs.

## Lounge

Situated from the kitchen, the lounge benefits from being split into a dining area and a living space with a multi fuel burner being the main feature of this space , French doors to the rear with window to the front elevation , and also benefiting from the underfloor heating.

## Bathroom

The downstairs bathroom comprises of a panelled bath with shower over , tiled flooring , low level W/c and wash hand basin with taps over,



## First Floor Landing

Allowing access to ;

## Bedroom One

Situated to the rear elevation this double bedroom has a double glazed window to the rear elevation, carpet flooring and radiator.

## Bedroom Two

Situated to the front elevation this double bedroom has a double glazed window to the front elevation, carpet flooring and radiator.

## Bedroom Three

Situated to the front elevation this double bedroom has a double glazed window to the front elevation, carpet flooring and radiator.

## Shower Room

The three piece shower room comprises of a shower cubicle with power shower , low level W/C and wash hand basin with taps over, vinyl flooring and towel radiator.

## Front

The property from the front stands back from the road with a driveway down the right hand side leading to the detached garage and also with mature shrubs to the front allowing privacy from the lounge and an outlook of colour.

## Rear

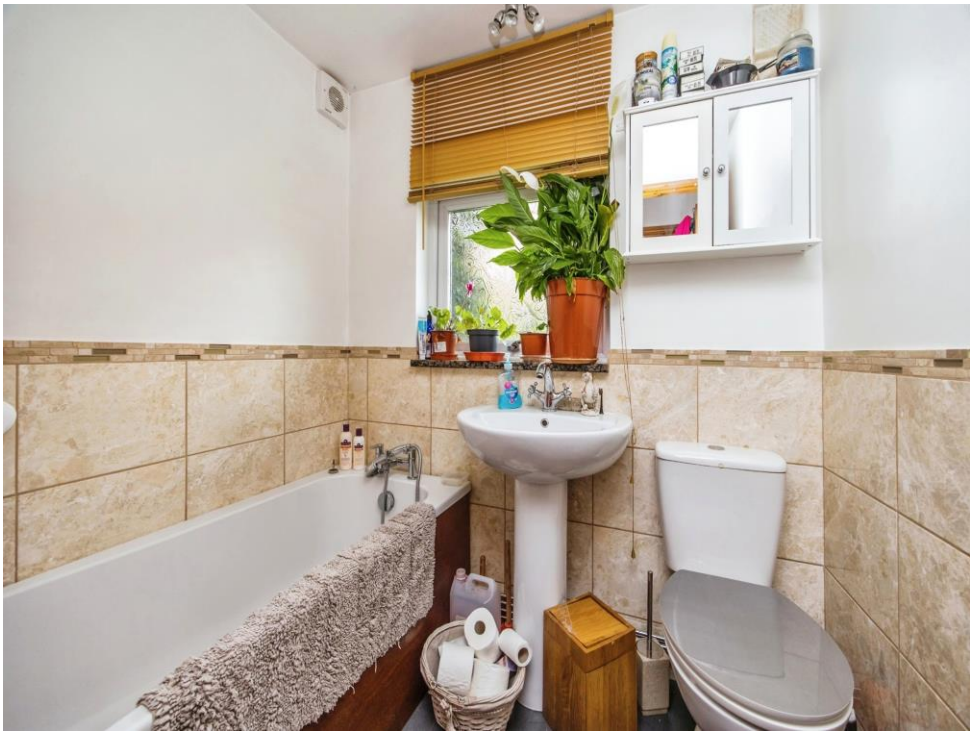
The rear of the property is of low maintenance however does benefit from mature shrubs and flowers allowing a variety of colours creating a private area filled with wildlife and privacy throughout to enjoy them warmer months.

## Agents Notes

This property over the year has been loved and compliments many of the original features of that from its Victorian age, the current owners have also had many works carried out on the property such as a new roof in January 2024 , new boiler approximately 2 years old, new pump for the under floor heating , replacement of windows and general TLC since they have owned it.



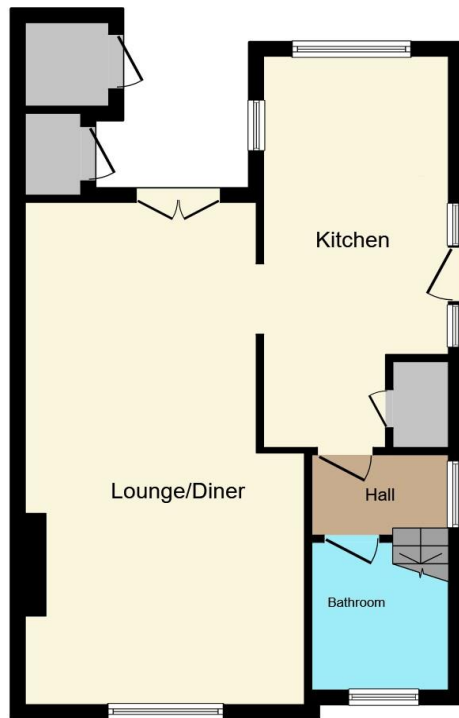




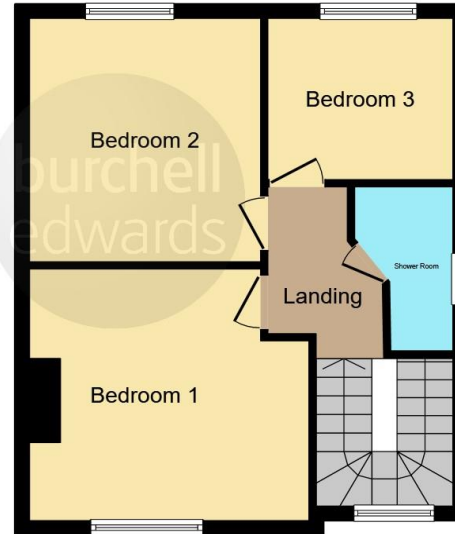




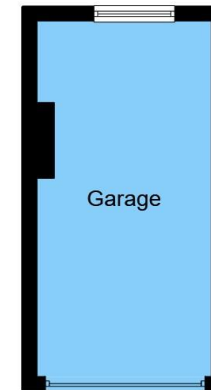




**Ground Floor**



**First Floor**



**Garage**

This floor plan is for illustrative purposes only. It is not drawn to scale. Any measurements, floor areas (including any total floor area), openings and orientation are approximate. No details are guaranteed, they cannot be relied upon for any purpose and they do not form part of any agreement. No liability is taken for any error, omission or misstatement. A party must rely upon its own inspection(s). Powered by [www.focalagent.com](http://www.focalagent.com)

To view this property please contact Burchell Edwards on

**T 01773 715454**  
**E [eastwood@burchelledwards.co.uk](mailto:eastwood@burchelledwards.co.uk)**

134 Nottingham Road Eastwood  
NOTTINGHAM NG16 3GD

**EPC Rating: E**

**Tenure: Freehold**

**[check out more properties at burchelledwards.co.uk](http://www.burchelledwards.co.uk)**



1. MONEY LAUNDERING REGULATIONS Intending purchasers will be asked to produce identification documentation at a later stage and we would ask for your co-operation in order that there will be no delay in agreeing the sale. 2. These particulars do not constitute part or all of an offer or contract. 3. The measurements indicated are supplied for guidance only and as such must be considered incorrect. Potential buyers are advised to recheck measurements before committing to any expense. 4. We have not tested any apparatus, equipment, fixtures, fittings or services and it is in the buyers interest to check the working condition of any appliances.

Burchell Edwards is a trading name of Connells Residential which is registered in England and Wales under company number 1489613, Registered Office is Cumbria House, 16-20 Hockliffe Street, Leighton Buzzard, Bedfordshire, LU7 1GN. VAT Registration Number is 500 2481 05.

**See all our properties at [www.burchelledwards.co.uk](http://www.burchelledwards.co.uk) | [www.rightmove.co.uk](http://www.rightmove.co.uk) | [www.zoopla.co.uk](http://www.zoopla.co.uk)**

Property Ref: EWD206517 - 0003