



Walters Crescent
Selston NOTTINGHAM



Walters Crescent Selston NOTTINGHAM NG16 6FU

for sale offers in the region of
£90,000



Property Description

A perfect first time buy in the popular location of Selston. Walters Crescent is ideally located in close proximity to major road links including junction 27 of the M1 as well as the open countryside. There are popular schools nearby along with local shops and bus links. In brief the accommodation briefly comprises of a stair case leading to the apartment with a hallway that leads to; a newly fitted kitchen to the front, lounge, family bathroom and two bedrooms. The property is both double glazed and gas centrally heated. Viewings are absolutely essential to appreciate the accommodation on offer.

Entrance Hallway

The entrance hallway is up the stairs from the Entrance door and allows access to all areas of the apartment.

Lounge

This extremely spacious living space is situated to the front elevation with large UPVC double glazed window overlooking the fields allows the perfect space to wind down or host with friends and family and also has a feature electric fire, radiator and laminate flooring.

Kitchen

The recently fitted kitchen comprises of matching wall and base units with counter tops over, plumbing for washing machine, stainless still sink and drainer unit, complementary tiled splashbacks and space for a fridge freezer with vinyl flooring.



Bathroom

Fully fitted with a three piece suite; W.C, wash hand basin, bath with mixer taps and electric shower over, partly tiled, centrally heated chrome towel rail, vinyl flooring and UPVC double glazed opaque window to the side elevation.

Bedroom One

Situated to the rear elevation with large double glazed window, radiator and laminate flooring.

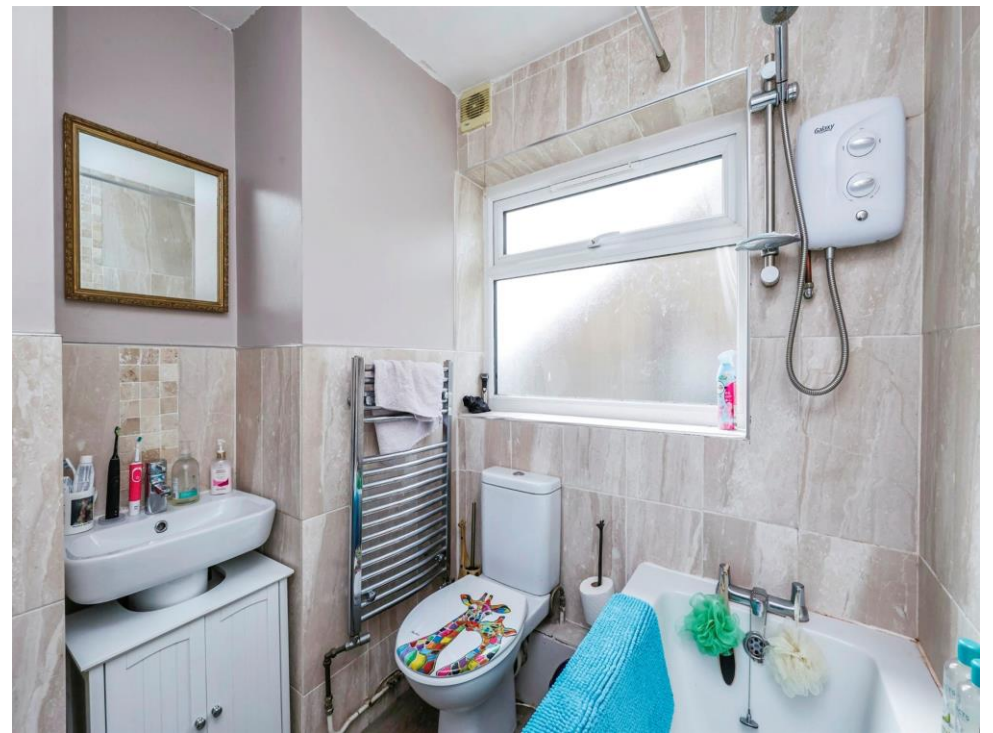
Bedroom Two

Situated to the rear elevation with large double glazed window, radiator and laminate flooring.

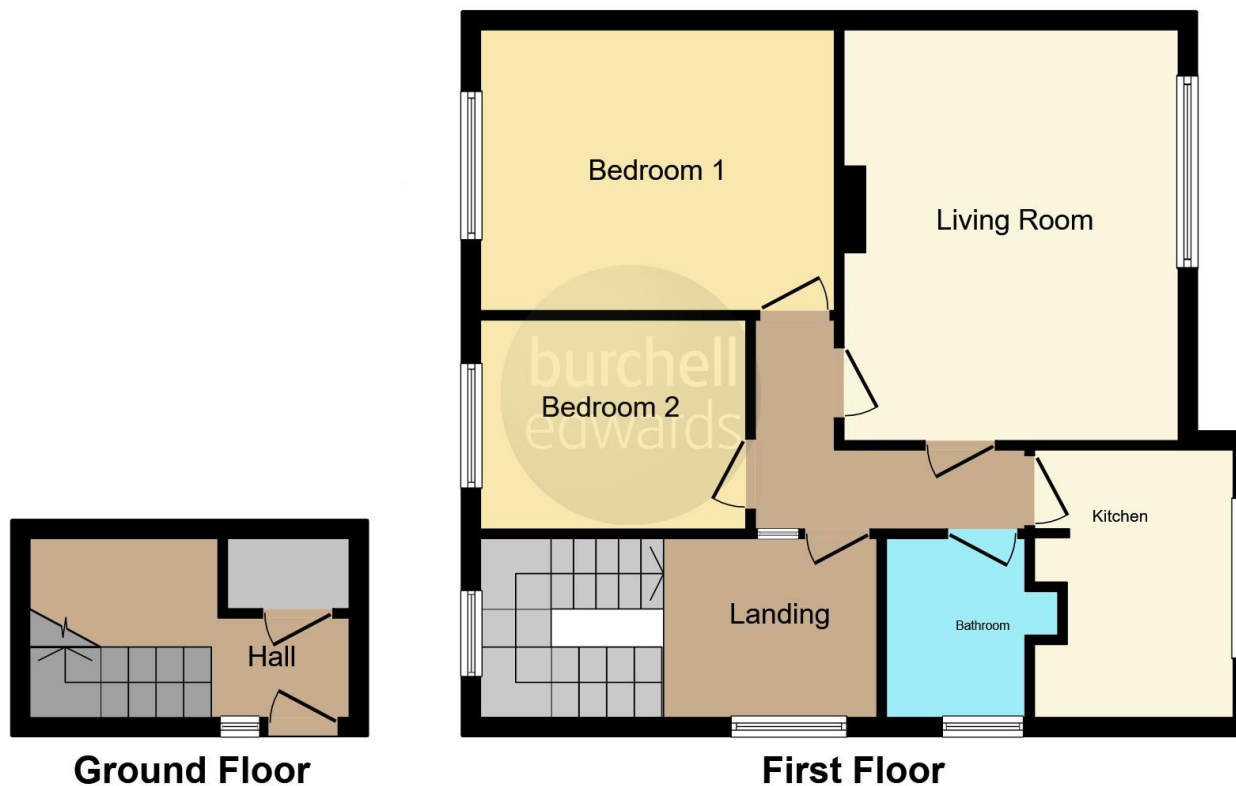
Outside

Outside the property is a communal garden and parking for the owners of the flats, the first floor apartment sits back from the road and has a side access door leading to the apartment.









This floor plan is for illustrative purposes only. It is not drawn to scale. Any measurements, floor areas (including any total floor area), openings and orientation are approximate. No details are guaranteed, they cannot be relied upon for any purpose and they do not form part of any agreement. No liability is taken for any error, omission or misstatement. A party must rely upon its own inspection(s). Powered by www.focalagent.com

To view this property please contact Burchell Edwards on

T 01773 715454
E eastwood@burchelledwards.co.uk

134 Nottingham Road Eastwood
 NOTTINGHAM NG16 3GD

EPC Rating: Awaited

Tenure: Leasehold

check out more properties at burchelledwards.co.uk

This is a Leasehold property with details as follows; Term of Lease 125 years from 15 Sep 2014. Should you require further information please contact the branch. Please Note additional fees could be incurred for items such as Leasehold packs.



1. MONEY LAUNDERING REGULATIONS Intending purchasers will be asked to produce identification documentation at a later stage and we would ask for your co-operation in order that there will be no delay in agreeing the sale. 2. These particulars do not constitute part or all of an offer or contract. 3. The measurements indicated are supplied for guidance only and as such must be considered incorrect. Potential buyers are advised to recheck measurements before committing to any expense. 4. We have not tested any apparatus, equipment, fixtures, fittings or services and it is in the buyers interest to check the working condition of any appliances.

Burchell Edwards is a trading name of Connells Residential which is registered in England and Wales under company number 1489613, Registered Office is Cumbria House, 16-20 Hockliffe Street, Leighton Buzzard, Bedfordshire, LU7 1GN. VAT Registration Number is 500 2481 05.

See all our properties at www.burchelledwards.co.uk | www.rightmove.co.uk | www.zoopla.co.uk

Property Ref: EWD206311 - 0001