



The Ellington Nine Corners  
Kimberley Nottingham





# The Ellington Nine Corners Kimberley Nottingham NG16 2ZG

for sale  
**£240,000**



## Property Description

NEW RELEASE! The Ellington is a 2 storey mid townhouse within our Nine Corners development, this plot internally covers 850sqft, to the ground floor there is an open plan kitchen diner, W.C, and separate living area and on the first floor, there is a master bedroom with ensuite, a further 2 bedrooms, and a family bathroom.

The town of Kimberley is approximately 6 miles from Nottingham City Centre & is located just off the A610 and is a few miles from Junction 26 of the M1. There are a number of travel links, vibrant pubs, restaurants & shops, good schools & other useful local amenities nearby.

INCENTIVE; £5,000 discount available if reserved during April!

## Entrance Hall

## Lounge

14' 5" x 11' 7" ( 4.39m x 3.53m )

## Kitchen/Diner

15' x 13' 8" ( 4.57m x 4.17m )

## Downstairs W.C



## Landing

### Bedroom One

10' 9" x 10' 5" ( 3.28m x 3.17m )

### Ensuite

10' 5" x 4' ( 3.17m x 1.22m )

### Bedroom Two

11' x 8' 2" ( 3.35m x 2.49m )

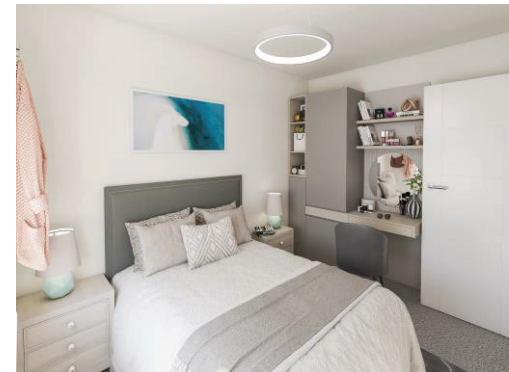
### Bedroom Three

9' 3" x 6' 6" ( 2.82m x 1.98m )

## Family Bathroom

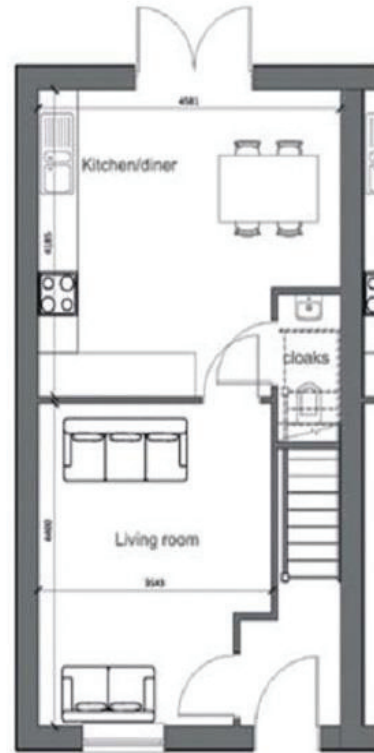
## Rear Garden

Courtyard style garden and two private parking spaces.





Ground floor



First floor



To view this property please contact Burchell Edwards on

**T 01773 715454**  
**E eastwood@burchelledwards.co.uk**

134 Nottingham Road Eastwood  
NOTTINGHAM NG16 3GD

EPC Rating: Awaited

Tenure: Freehold

**check out more properties at [burchelledwards.co.uk](http://burchelledwards.co.uk)**



1. MONEY LAUNDERING REGULATIONS Intending purchasers will be asked to produce identification documentation at a later stage and we would ask for your co-operation in order that there will be no delay in agreeing the sale. 2. These particulars do not constitute part or all of an offer or contract. 3. The measurements indicated are supplied for guidance only and as such must be considered incorrect. Potential buyers are advised to recheck measurements before committing to any expense. 4. We have not tested any apparatus, equipment, fixtures, fittings or services and it is in the buyers interest to check the working condition of any appliances.

Burchell Edwards is a trading name of Connells Residential which is registered in England and Wales under company number 1489613, Registered Office is Cumbria House, 16-20 Hockliffe Street, Leighton Buzzard, Bedfordshire, LU7 1GN. VAT Registration Number is 500 2481 05.

**See all our properties at [www.burchelledwards.co.uk](http://www.burchelledwards.co.uk) | [www.rightmove.co.uk](http://www.rightmove.co.uk) | [www.zoopla.co.uk](http://www.zoopla.co.uk)**

Property Ref: EWD206320 - 0002