



Colemeadow Road, Coleshill Birmingham

burchell
edwards



Property Description

Burchell Edwards are proud to offer this three bedroom, mid terraced property in Coleshill. this property is in need of renovation but has plenty of potential and is situated in a lovely area offering great access to local transport links, schooling and amenities.

Entrance Hallway

Door to front elevation, central heating radiator and carpet.

Lounge

15' x 12' max (4.57m x 3.66m max)
Double glazed window to front elevation, carpet and central heating radiator.

Kitchen

10' 7" x 15' 2" (3.23m x 4.62m)
Double glazed patio doors and window to rear elevation, a range of wall and base units with work surface over incorporating a sink with drainer unit, washing machine, central heating radiator, central heating boiler, tiling to splash prone areas and lino flooring.



Landing

Carpet, loft access and storage cupboard.

Bedroom One

13' x 8' 5" (3.96m x 2.57m)

Double glazed window to front elevation, carpet, central heating radiator and fitted wardrobes.

Bedroom Two

10' 9" x 8' 5" (3.28m x 2.57m)

Double glazed window to rear elevation, carpet, central heating radiator and storage cupboard.

Bedroom Three

9' 8" into door recess x 6' 5" (2.95m into door recess x 1.96m)

Double glazed window to front elevation, carpet and storage cupboard.

Shower Room

Double glazed window to rear elevation, wash hand basin, W.C, shower cubicle and lino flooring.

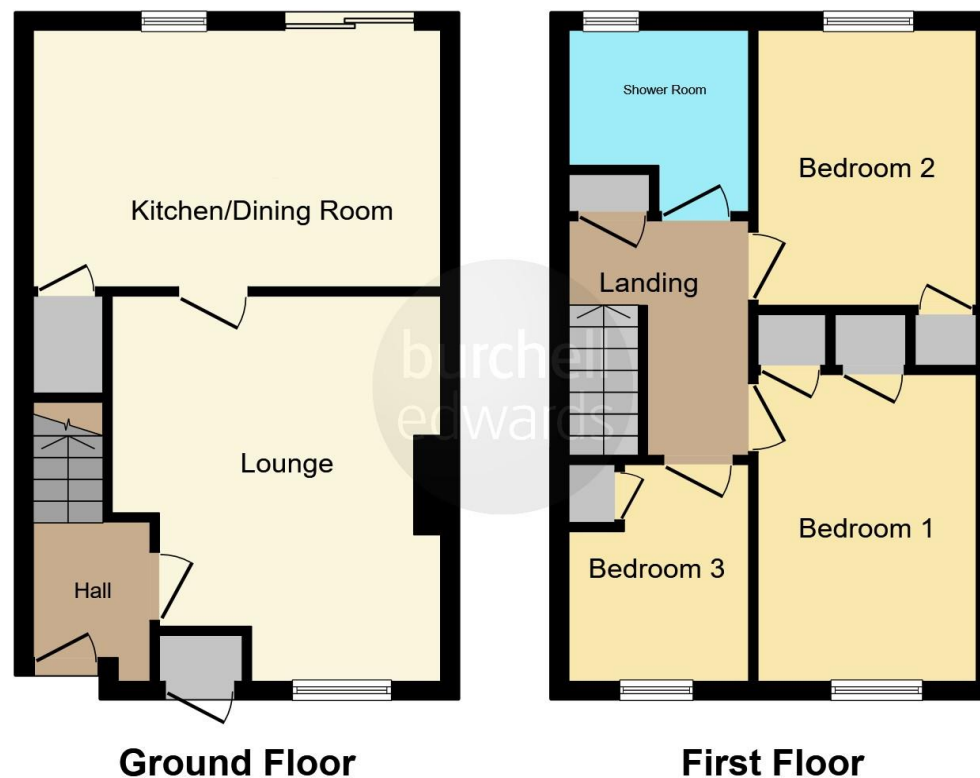
Rear Garden

Plants and shrubs.









This floor plan is for illustrative purposes only. It is not drawn to scale. Any measurements, floor areas (including any total floor area), openings and orientation are approximate. No details are guaranteed, they cannot be relied upon for any purpose and they do not form part of any agreement. No liability is taken for any error, omission or misstatement. A party must rely upon its own inspection(s). Powered by www.focalagent.com

To view this property please contact Burchell Edwards on

T 0121 749 7888
E castlebromwich@burchelledwards.co.uk

2-4 Hurst Lane
 BIRMINGHAM B34 7HR

EPC Rating: Awaited

Tenure: Freehold

view this property online burchelledwards.co.uk/Property/CBW209796



1. MONEY LAUNDERING REGULATIONS Intending purchasers will be asked to produce identification documentation at a later stage and we would ask for your co-operation in order that there will be no delay in agreeing the sale. 2. These particulars do not constitute part or all of an offer or contract. 3. The measurements indicated are supplied for guidance only and as such must be considered incorrect. Potential buyers are advised to recheck measurements before committing to any expense. 4. We have not tested any apparatus, equipment, fixtures, fittings or services and it is in the buyers interest to check the working condition of any appliances.

Burchell Edwards is a trading name of Connells Residential which is registered in England and Wales under company number 1489613, Registered Office is Cumbria House, 16-20 Hockliffe Street, Leighton Buzzard, Bedfordshire, LU7 1GN. VAT Registration Number is 500 2481 05.

See all our properties at www.burchelledwards.co.uk | www.rightmove.co.uk | www.zoopla.co.uk

Property Ref: CBW209796 - 0002