



Piccadilly Close, Birmingham

burchell
edwards



Property Description

Burchell Edwards are pleased to present this well maintained, spacious two-bedroom terraced property. This home has been tastefully decorated throughout with a modern open plan living area which opens out into a stunning rear garden. Upstairs both bedrooms are a very good size with a family bathroom and W/C.

Entrance Hallway

Door to front elevation, tiled flooring, central heating radiator, under stairs storage and stairs to first floor accommodation.

Lounge

12' 5" x 12' 11" (3.78m x 3.94m)

Open plan to kitchen. Double glazed window to rear elevation, laminate flooring and central heating radiator.

Kitchen

19' 1" x 7' 8" (5.82m x 2.34m)

Double glazed window to front elevation, double glazed French doors to garden, a range of wall and base units with work surface over incorporating a sink with drainer unit, electric oven and hob with cooker hood over, space and plumbing for washing machine, tiled flooring, tiling to splash prone areas and central heating radiator.



Landing

Stairs to first floor accommodation, loft access and storage cupboard housing central heating boiler.

Bedroom One

12' 4" x 10' 10" (3.76m x 3.30m)

Double glazed window to rear elevation, carpet and central heating radiator.

Bedroom Two

12' 4" x 9' 9" (3.76m x 2.97m)

Double glazed window to rear elevation, central heating radiator and carpet.

Bathroom

Double glazed window to front elevation, W.C, wash hand basin, electric shower, bath, central heating radiator, lino flooring, vanity storage and central heating radiator.

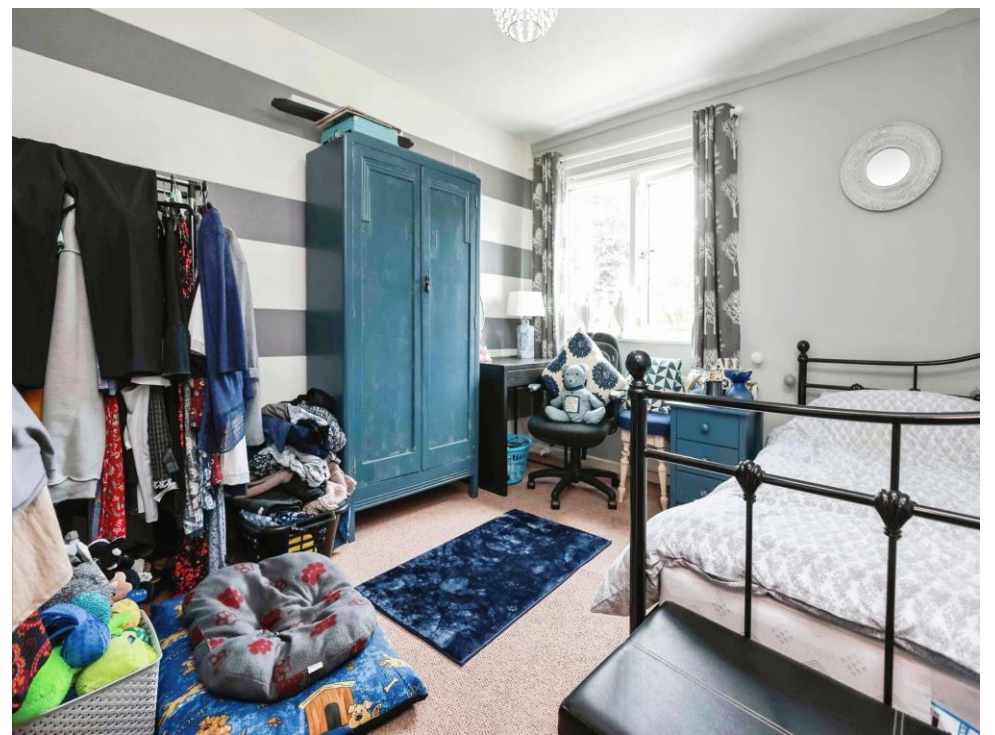
Ground Floor W.C

Double glazed window to front elevation, W.C, lino flooring and central heating radiator.

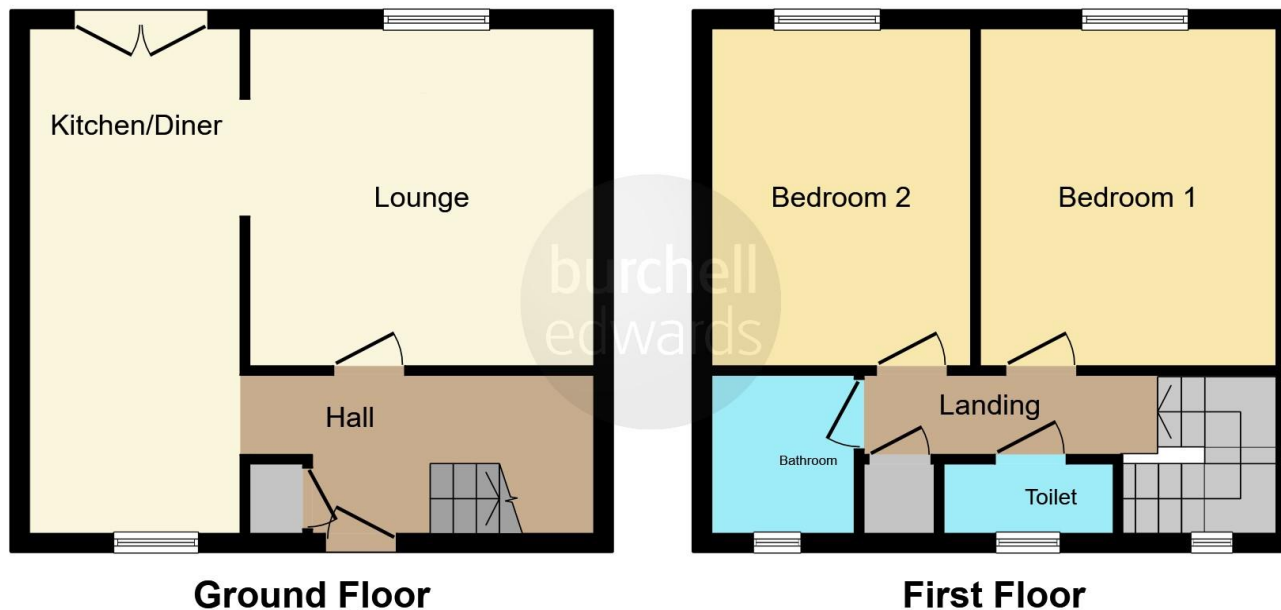
Rear Garden

Paved patio area, brick built storage, laid to lawn and side gate giving access to frontage.









This floor plan is for illustrative purposes only. It is not drawn to scale. Any measurements, floor areas (including any total floor area), openings and orientation are approximate. No details are guaranteed, they cannot be relied upon for any purpose and they do not form part of any agreement. No liability is taken for any error, omission or misstatement. A party must rely upon its own inspection(s). Powered by www.focalagent.com

To view this property please contact Burchell Edwards on

T 0121 749 7888
E castlebromwich@burchelledwards.co.uk

2-4 Hurst Lane
 BIRMINGHAM B34 7HR

EPC Rating: C

Tenure: Freehold

view this property online burchelledwards.co.uk/Property/CBW209715



1. MONEY LAUNDERING REGULATIONS Intending purchasers will be asked to produce identification documentation at a later stage and we would ask for your co-operation in order that there will be no delay in agreeing the sale. 2. These particulars do not constitute part or all of an offer or contract. 3. The measurements indicated are supplied for guidance only and as such must be considered incorrect. Potential buyers are advised to recheck measurements before committing to any expense. 4. We have not tested any apparatus, equipment, fixtures, fittings or services and it is in the buyers interest to check the working condition of any appliances.

Burchell Edwards is a trading name of Connells Residential which is registered in England and Wales under company number 1489613, Registered Office is Cumbria House, 16-20 Hockliffe Street, Leighton Buzzard, Bedfordshire, LU7 1GN. VAT Registration Number is 500 2481 05.

See all our properties at www.burchelledwards.co.uk | www.rightmove.co.uk | www.zoopla.co.uk

Property Ref: CBW209715 - 0007