



Haycroft Avenue, Birmingham

Haycroft Avenue,
Birmingham B8 3LA

for sale offers in excess of
£200,000



Property Description

Burchell Edwards are present this three bedroom semi-detached property situated in the Saltley area of Birmingham (B8).

The property in brief consists of two reception rooms, kitchen, gardens to the front and rear, three bedrooms and a family bathroom. Additional benefits of double glazing and gas central heating.

Upon arrival you will also notice the house is sat in a quiet cul-de-sac location- within close proximity to many local amenities and minutes from Birmingham City Centre. Viewings are definitely recommended to appreciate the space and accommodation available.

Entrance Hallway

Central heating radiator and laminate flooring.

Lounge

12' 8" x 12' 2" (3.86m x 3.71m)
Double glazed patio doors and window to rear elevation, central heating radiator and laminate flooring.

Dining Room

12' 2" not into bay x 11' 8" (3.71m not into bay x 3.56m)
Double glazed bay window to front elevation, laminate flooring and central heating radiator.

Kitchen

8' 6" x 6' 5" (2.59m x 1.96m)
Double glazed window to rear elevation, a range of wall and base units with work surface over incorporating a sink with drainer unit, four ring gas hob with extractor over and lino flooring.

Landing

Double glazed window to side elevation, loft access and carpet.

Bedroom One

12' not into bay x 11' 8" (3.66m not into bay x 3.56m)

Double glazed bay window to front elevation, laminate flooring and central heating radiator.

Bedroom Two

12' 9" x 11' 8" (3.89m x 3.56m)

Double glazed window to rear elevation, laminate flooring and central heating radiator.

Bedroom Three

7' 2" x 6' 6" (2.18m x 1.98m)

Double glazed window to front elevation, laminate flooring and central heating radiator.

Bathroom

Double glazed window to rear elevation, wash hand basin, W.C, shower cubicle with rainfall shower, central heating radiator, lino flooring and tiling to walls.

Front Garden

Block paved foregarden.

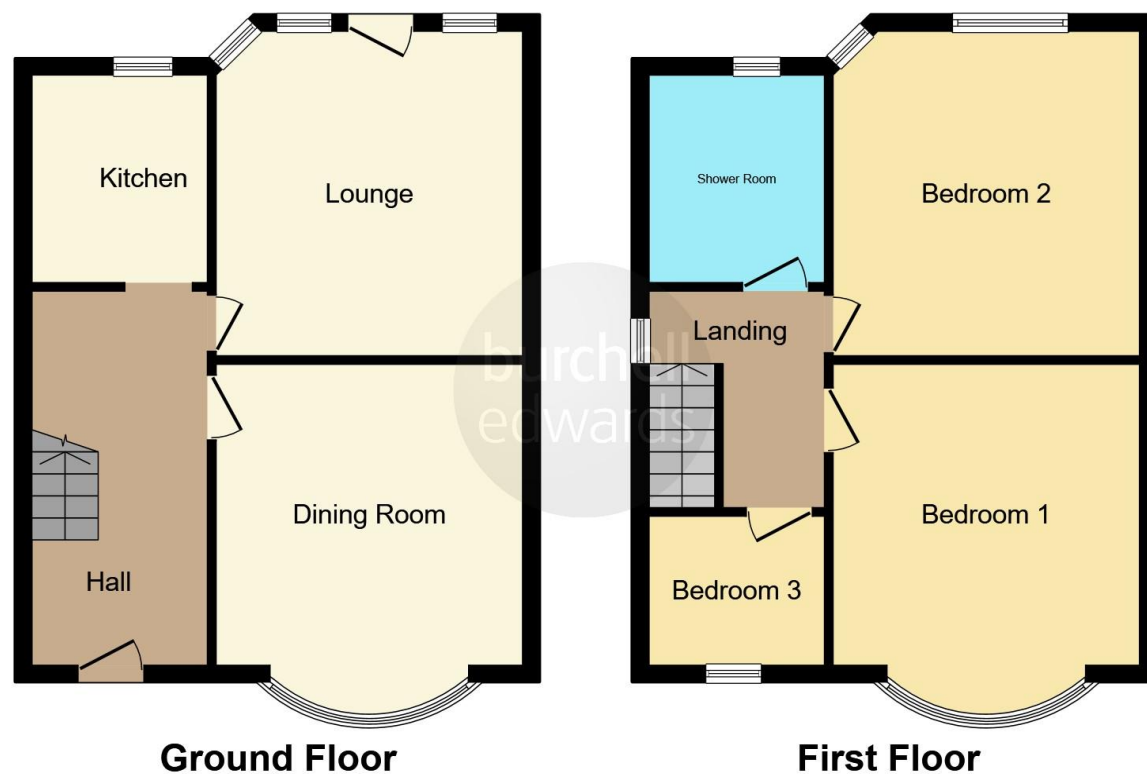
Rear Garden

All patio.









This floor plan is for illustrative purposes only. It is not drawn to scale. Any measurements, floor areas (including any total floor area), openings and orientation are approximate. No details are guaranteed, they cannot be relied upon for any purpose and they do not form part of any agreement. No liability is taken for any error, omission or misstatement. A party must rely upon its own inspection(s). Powered by www.focalagent.com

To view this property please contact Burchell Edwards on

T 0121 749 7888
E castlebromwich@burchelledwards.co.uk

2-4 Hurst Lane
 BIRMINGHAM B34 7HR

EPC Rating: D

Tenure: Freehold

view this property online burchelledwards.co.uk/Property/CBW209608



1. MONEY LAUNDERING REGULATIONS Intending purchasers will be asked to produce identification documentation at a later stage and we would ask for your co-operation in order that there will be no delay in agreeing the sale. 2. These particulars do not constitute part or all of an offer or contract. 3. The measurements indicated are supplied for guidance only and as such must be considered incorrect. Potential buyers are advised to recheck measurements before committing to any expense. 4. We have not tested any apparatus, equipment, fixtures, fittings or services and it is in the buyers interest to check the working condition of any appliances.

Burchell Edwards is a trading name of Connells Residential which is registered in England and Wales under company number 1489613, Registered Office is Cumbria House, 16-20 Hockliffe Street, Leighton Buzzard, Bedfordshire, LU7 1GN. VAT Registration Number is 500 2481 05.

See all our properties at www.burchelledwards.co.uk | www.rightmove.co.uk | www.zoopla.co.uk

Property Ref: CBW209608 - 0006