



The Hazel Beaufort Drive  
Birmingham





# The Hazel Beaufort Drive Birmingham B36 8DY

for sale  
**£595,000**



## Property Description

Five bedroom detached home measuring 1730 sq ft approx. The Hazel benefits from a large kitchen with integrated appliances separate dining room, living room. Master bedroom with en-suite, four double bedrooms. Ideally situated, close to all city centre amenities.

## Ground Floor

### Grand Entrance Hall

### Kitchen

14' 8" x 12' 11" ( 4.47m x 3.94m )

### Family Room

16' 4" x 12' 11" ( 4.98m x 3.94m )

### Dining Room

12' 8" x 12' 2" ( 3.86m x 3.71m )

### Living Room

.9' 5" x 7' 9" ( 2.87m x 2.36m )

### Lounge

13' 11" x 9' 2" ( 4.24m x 2.79m )

### En-Suite

## First Floor

### Master Bedroom

12' 11" x 10' 11" ( 3.94m x 3.33m )

### En-Suite

### Bedroom Two

9' 9" x 9' 4" ( 2.97m x 2.84m )

### Bedroom Three

12' 8" x 12' 2" ( 3.86m x 3.71m )

### Bedroom Four

14' 4" x 7' 10" ( 4.37m x 2.39m )

### Bedroom Five

13' 10" x 9' 2" ( 4.22m x 2.79m )

### Bathroom

**Outside**

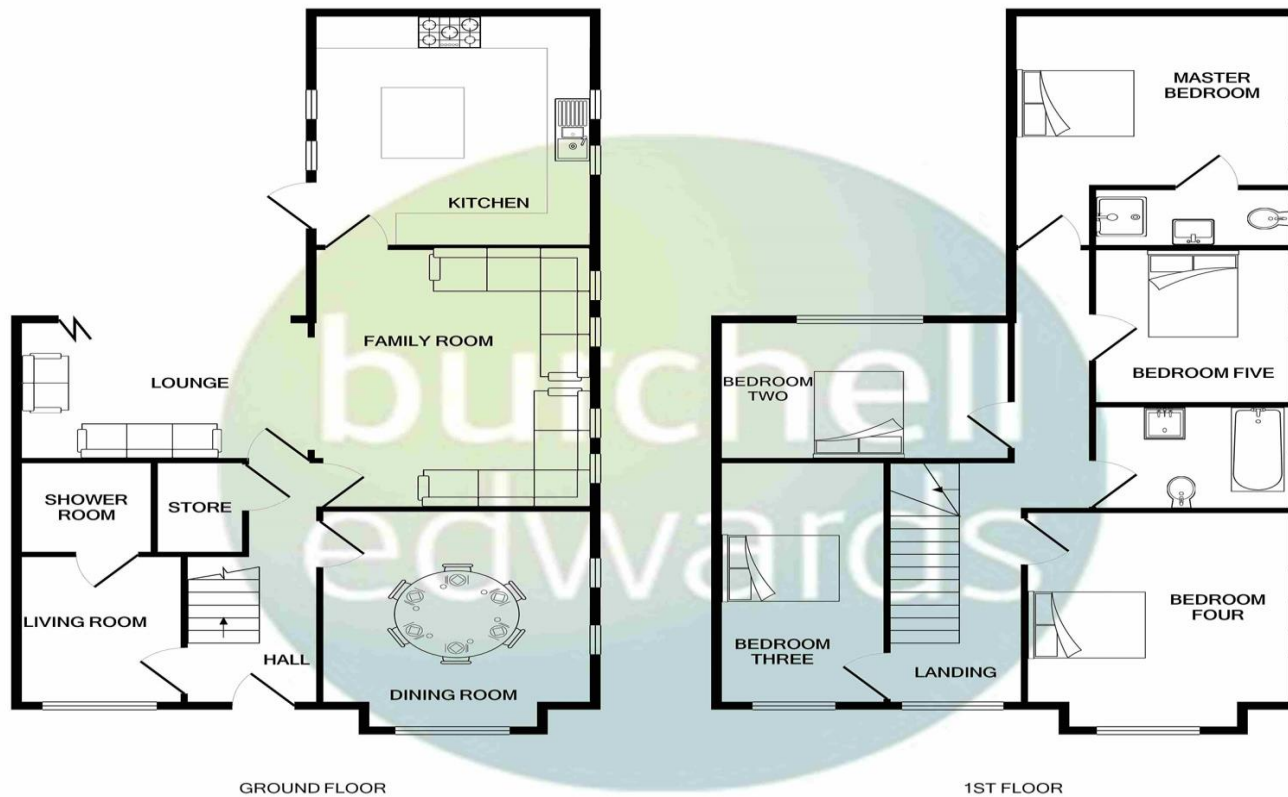
**Off Road Parking**

**Rear Garden**

**Photos Disclaimer**

The photos shown are of a typical Silveroak show home.





Whilst every attempt has been made to ensure the accuracy of the floor plan contained here, measurements of doors, windows, rooms and any other items are approximate and no responsibility is taken for any error, omission, or mis-statement. This plan is for illustrative purposes only and should be used as such by any prospective purchaser. The services, systems and appliances shown have not been tested and no guarantee as to their operability or efficiency can be given  
Made with Metropix ©2021



To view this property please contact Burchell Edwards on

**T 0121 749 7888**  
**E castlebromwich@burchelledwards.co.uk**

2-4 Hurst Lane  
BIRMINGHAM B34 7HR

**EPC Rating: Exempt**

**Tenure: Freehold**

**view this property online [burchelledwards.co.uk/Property/CBW207407](https://www.burchelledwards.co.uk/Property/CBW207407)**



1. MONEY LAUNDERING REGULATIONS Intending purchasers will be asked to produce identification documentation at a later stage and we would ask for your co-operation in order that there will be no delay in agreeing the sale. 2. These particulars do not constitute part or all of an offer or contract. 3. The measurements indicated are supplied for guidance only and as such must be considered incorrect. Potential buyers are advised to recheck measurements before committing to any expense. 4. We have not tested any apparatus, equipment, fixtures, fittings or services and it is in the buyers interest to check the working condition of any appliances.

**See all our properties at [www.burchelledwards.co.uk](https://www.burchelledwards.co.uk) | [www.rightmove.co.uk](https://www.rightmove.co.uk) | [www.zoopla.co.uk](https://www.zoopla.co.uk)**

**Property Ref: CBW207407 - 0003**