



Balmoral Way
Hatton Derby



Balmoral Way Hatton Derby DE65 5RG

for sale offers over
£180,000



Property Description

Burchell Edwards are delighted to bring to market this modern 2-bedroom mid-terrace home, situated in a new development in the much sought-after village of Hatton, just outside Burton-Upon-Trent.

The area is popular because of its excellent position, being well-connected to the A50 for commuters to Stoke and/or Derby. Nearby Tutbury offers a range of country pubs and village stores, as well as good local schooling for all ages.

This nearly new home comes with 8 years' NHBC guarantee. Upon arrival, the property welcomes with 2 allocated parking spaces directly at the front door.

Entry leads into an inviting hallway, with guest cloakroom and with stairs up to the 1st floor as well as modern kitchen leading off. Through to the spacious lounge-diner at the rear, this is light and airy thanks to large French patio doors leading out the enclosed rear garden. This has gated access out at the rear and includes both lawned and patio areas.

The 1st floor accommodation consists of 2 double bedrooms, with family bathroom and loft access at the landing space in between. Early viewing is highly recommended.

Guest W.C

Double glazed window to front elevation, W.C, wash hand basin, central heating radiator, extractor, tiled flooring and tiling to splash prone areas.

Lounge-Diner

14' max x 12' 4" max (4.27m max x 3.76m max)
Double glazed French doors to rear elevation, carpet, two central heating radiators and built in storage under stairs.

Kitchen

10' 9" x 8' 10" max (3.28m x 2.69m max)
Double glazed window to front elevation with blinds, a range of wall and base units with work surface over incorporating a sink with drainer unit, electric oven, gas hob, extractor, space and plumbing for washing machine, tiling to splash prone areas, tiled flooring and central heating boiler.

Landing

Loft access and carpet.

Bedroom One

12' 4" max x 8' 9" max (3.76m max x 2.67m max)
Two double glazed windows to front elevation with blinds, central heating radiator, carpet and built in storage and shelving.

Bedroom Two

12' 4" x 9' 2" (3.76m x 2.79m)
Double glazed window to rear elevation with blinds, central heating radiator and carpet.

Bathroom

Electric shower over, vanity unit, wash hand basin, W.C, extractor, vinyl flooring and tiling to splash prone areas.

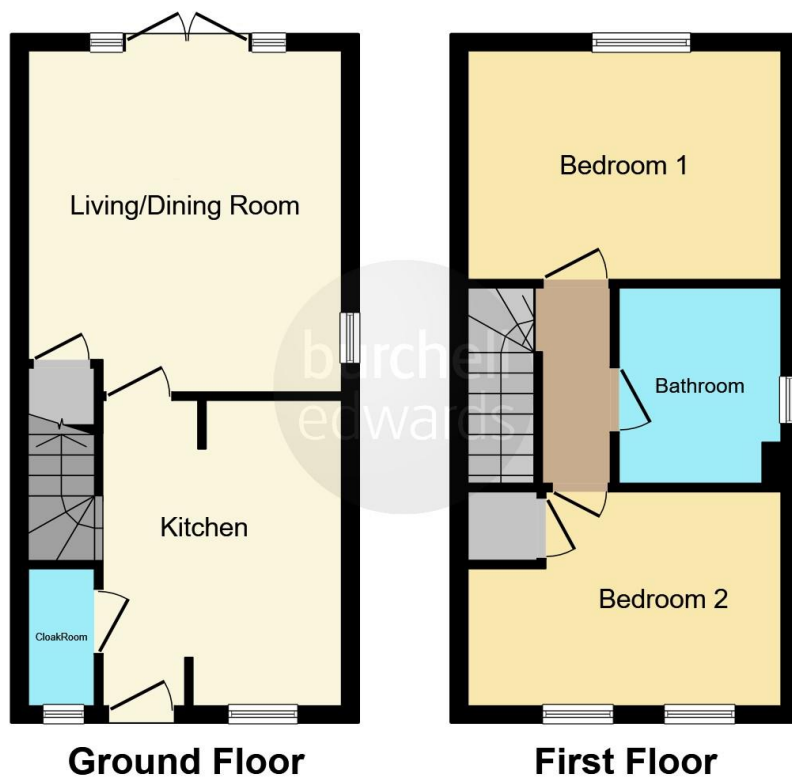
Front Garden

Slabs to front door and two allocated parking spaces.

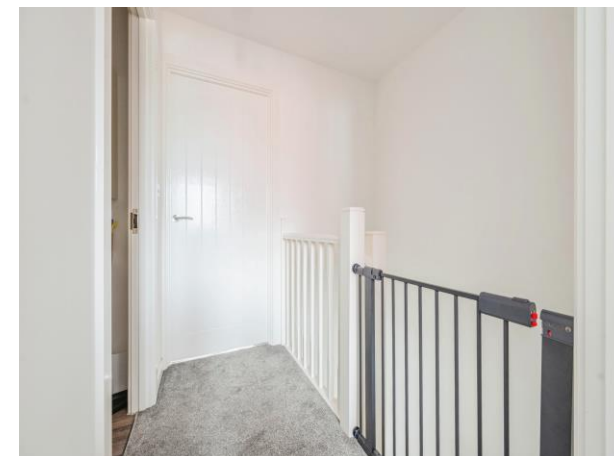
Front Garden

Patio area, outside tap, outdoor lighting, gated access to rear and fencing to all boundaries.





This floor plan is for illustrative purposes only. It is not drawn to scale. Any measurements, floor areas (including any total floor area), openings and orientation are approximate. No details are guaranteed, they cannot be relied upon for any purpose and they do not form part of any agreement. No liability is taken for any error, omission or misstatement. A party must rely upon its own inspection(s). Powered by www.focalagent.com



To view this property please contact Burchell Edwards on

T 01283 530 169
E burton@burchelledwards.co.uk

Britannia House Station Street
 BURTON-ON-TRENT DE14 1AN

EPC Rating: B

Tenure: Freehold

view this property online burchelledwards.co.uk/Property/BUT209963



1. MONEY LAUNDERING REGULATIONS Intending purchasers will be asked to produce identification documentation at a later stage and we would ask for your co-operation in order that there will be no delay in agreeing the sale. 2. These particulars do not constitute part or all of an offer or contract. 3. The measurements indicated are supplied for guidance only and as such must be considered incorrect. Potential buyers are advised to recheck measurements before committing to any expense. 4. We have not tested any apparatus, equipment, fixtures, fittings or services and it is in the buyers interest to check the working condition of any appliances.

Burchell Edwards is a trading name of Connells Residential which is registered in England and Wales under company number 1489613, Registered Office is Cumbria House, 16-20 Hockliffe Street, Leighton Buzzard, Bedfordshire, LU7 1GN. VAT Registration Number is 500 2481 05.

See all our properties at www.burchelledwards.co.uk | www.rightmove.co.uk | www.zoopla.co.uk

Property Ref: BUT209963 - 0009