



Gretton Avenue
Stretton Burton-On-Trent

burchell
edwards

Gretton Avenue Stretton Burton-On-Trent DE13 0BX

for sale offers over
£230,000



Property Description

This three bedroom detached family home is situated in the popular village of Stretton, Burton Upon Trent. The accommodation has been recently renovated throughout and comprises of lounge, kitchen diner, conservatory, bedroom and bathroom on the ground floor, while to the first floor there are a further two bedrooms.

Outside to the front is a lawned garden along with driveway providing off road parking, this leads down the side to the detached garage and enclosed rear garden, which is mainly laid to lawn with patio area.

Lounge

15' 10" x 11' 4" (4.83m x 3.45m)

Carpeted with door leading to stairs, window to front. Radiator

Kitchen Diner

21' 6" x 9' 2" (6.55m x 2.79m)

A modern range of wall and base units with work surfaces over, inset sink and drainer, tiled splash backs, integral electric oven and hob with space for washer and fridge freezer with window to side, door and window opening out into the rear garden and doors into conservatory.

Conservatory

9' 8" x 6' 5" (2.95m x 1.96m)

UPVC conservatory with windows to side and rear along with door leading out to the garden

Bedroom

10' 2" x 9' (3.10m x 2.74m)

Carpeted with window to front. Radiator

Bathroom

A modern white suite comprising of panel bath with shower over, low level w/c and hand wash basin with vanity unit, with tiled splash backs and frosted window to side.

First Floor Landing

Carpeted with doors to both upstairs bedrooms

Master Bedroom

15' 2" x 10' 7" (4.62m x 3.23m)

Carpeted with windows to both front and side elevation. Radiator

Bedroom Two

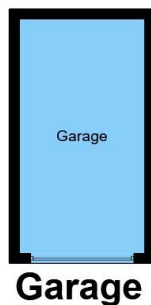
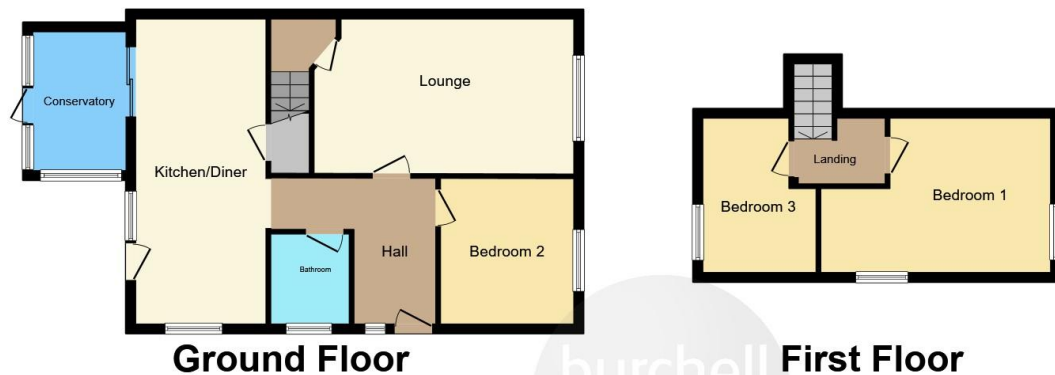
10' 7" x 7' 8" (3.23m x 2.34m)

Carpeted with window to rear elevation. Radiator

Outside

Outside to the front is a lawned garden along with driveway providing off road parking, this leads down the side to the detached garage and enclosed rear garden, which is mainly laid to lawn with patio area.





This floor plan is for illustrative purposes only. It is not drawn to scale. Any measurements, floor areas (including any total floor area), openings and orientation are approximate. No details are guaranteed, they cannot be relied upon for any purpose and they do not form part of any agreement. No liability is taken for any error, omission or misstatement. A party must rely upon its own inspection(s). Powered by www.focalagent.com



To view this property please contact Burchell Edwards on

T 01283 530 169
E burton@burchelledwards.co.uk

Britannia House Station Street
 BURTON-ON-TRENT DE14 1AN

EPC Rating: E

Tenure: Freehold

view this property online burchelledwards.co.uk/Property/BUT209916



1. MONEY LAUNDERING REGULATIONS Intending purchasers will be asked to produce identification documentation at a later stage and we would ask for your co-operation in order that there will be no delay in agreeing the sale. 2. These particulars do not constitute part or all of an offer or contract. 3. The measurements indicated are supplied for guidance only and as such must be considered incorrect. Potential buyers are advised to recheck measurements before committing to any expense. 4. We have not tested any apparatus, equipment, fixtures, fittings or services and it is in the buyers interest to check the working condition of any appliances.

Burchell Edwards is a trading name of Connells Residential which is registered in England and Wales under company number 1489613, Registered Office is Cumbria House, 16-20 Hockliffe Street, Leighton Buzzard, Bedfordshire, LU7 1GN. VAT Registration Number is 500 2481 05.

See all our properties at www.burchelledwards.co.uk | www.rightmove.co.uk | www.zoopla.co.uk

Property Ref: BUT209916 - 0006