



Belvedere Road
Burton-On-Trent





Property Description

Two Bedroom Mid Terraced Property set in a popular location near Burton hospital and offered with no upward chain. Comprising of lounge, dining room, kitchen and bathroom on the ground floor along with two bedrooms and the shower room to the first floor. Outside to the rear is a garden with patio and lawned areas

Entrance Hallway

Door to front elevation and laminate flooring.

Lounge

12' 2" x 13' 11" max (3.71m x 4.24m max)
Double glazed bay window to front elevation, laminate flooring, original decorative fire place and central heating radiator.

Dining Room

12' 2" x 11' 10" (3.71m x 3.61m)
Double glazed window to rear elevation, original decorative fire place, laminate flooring, central heating radiator and storage under stairs.

Kitchen

11' 5" x 7' 11" (3.48m x 2.41m)
Double glazed window to side elevation with blinds, door to side elevation, a range of wall and base units with work surface over incorporating a sink with drainer unit, electric oven, microwave, extractor, induction hob, central heating radiator, tiling to splash prone areas and connections for washing machine.

Landing

Central heating radiator and carpet.

Bedroom One

15' 7" x 11' 11" (4.75m x 3.63m)
Double glazed window to front elevation, laminate flooring, central heating radiator and built in storage over stairs.

Bathroom

Double glazed window to rear elevation, wash hand basin, W.C, walk in electric shower cubicle, vinyl flooring, central heating radiator, central heating boiler and wood paneling.

Bedroom Two

11' 11" x 12' 6" (3.63m x 3.81m)
Double glazed window to rear elevation, central heating radiator and laminate flooring.

Bathroom

Double glazed window to rear elevation with blinds, wash hand basin with storage, W.C, corner bath with shower over, vinyl flooring and central heating radiator.

Front Garden

Block paved garden with potential for a driveway.

Rear Garden

Patio area, storage shed, outside sockets, laid to lawn and fencing to all boundaries.





This floor plan is for illustrative purposes only. It is not drawn to scale. Any measurements, floor areas (including any total floor area), openings and orientation are approximate. No details are guaranteed, they cannot be relied upon for any purpose and they do not form part of any agreement. No liability is taken for any error, omission or misstatement. A party must rely upon its own inspection(s). Powered by www.focalagent.com

To view this property please contact Burchell Edwards on

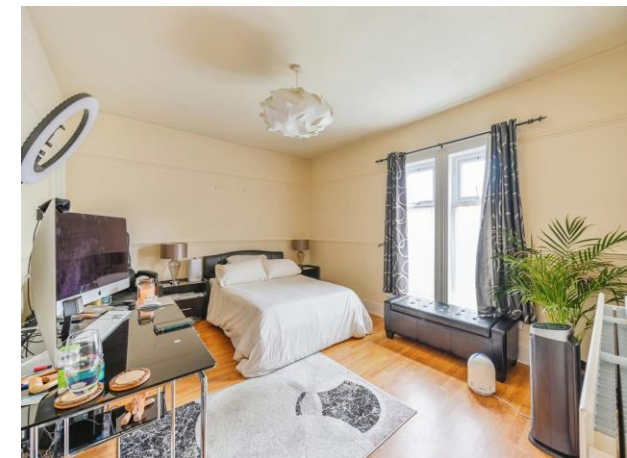
T 01283 530 169
E burton@burchelledwards.co.uk

Britannia House Station Street
 BURTON-ON-TRENT DE14 1AN

EPC Rating: Awaited

Tenure: Freehold

check out more properties at burchelledwards.co.uk



1. MONEY LAUNDERING REGULATIONS Intending purchasers will be asked to produce identification documentation at a later stage and we would ask for your co-operation in order that there will be no delay in agreeing the sale. 2. These particulars do not constitute part or all of an offer or contract. 3. The measurements indicated are supplied for guidance only and as such must be considered incorrect. Potential buyers are advised to recheck measurements before committing to any expense. 4. We have not tested any apparatus, equipment, fixtures, fittings or services and it is in the buyers interest to check the working condition of any appliances.

Burchell Edwards is a trading name of Connells Residential which is registered in England and Wales under company number 1489613, Registered Office is Cumbria House, 16-20 Hockliffe Street, Leighton Buzzard, Bedfordshire, LU7 1GN. VAT Registration Number is 500 2481 05.

See all our properties at www.burchelledwards.co.uk | www.rightmove.co.uk | www.zoopla.co.uk

Property Ref: BUT209837 - 0004