



Bethany Close  
Willington Derby







### Property Description

A Stunning three bedroom detached family home in the popular village of Willington in Derbyshire. This three bedroom detached family home offers modern living with an excellent standard of presentation throughout in a quiet residential estate ideal for young or established families. Internal accommodation includes a modern kitchen, family lounge, downstairs toilet and entrance hall. To the first floor are three well proportioned bedrooms and the family bathroom. Externally there is a private, lawned rear garden and block paved driveway.

### Lounge

18' 5" x 14' 5" ( 5.61m x 4.39m )  
Laminate flooring with patio doors opening out to rear garden. Radiator

### Kitchen

10' 1" x 6' 10" ( 3.07m x 2.08m )  
A range of wall and base units with work surfaces over, inset sink and drainer, integral gas hob and electric oven with space for washer and fridge freezer, window to front

### Downstairs W/C

Low level w/c and hand wash basin, frosted window to side. Radiator

### First Floor Landing

Doors leading to all three bedrooms and the bathroom

### Master Bedroom

14' 5" x 9' 5" ( 4.39m x 2.87m )  
Carpeted with window to front elevation. Radiator

### Bedroom Two

11' 2" x 7' 3" ( 3.40m x 2.21m )  
Carpeted with window to rear elevation. Radiator

### Bedroom Three

7' 8" x 6' 10" ( 2.34m x 2.08m )  
Carpeted with window to rear elevation.

Radiator

### Bathroom

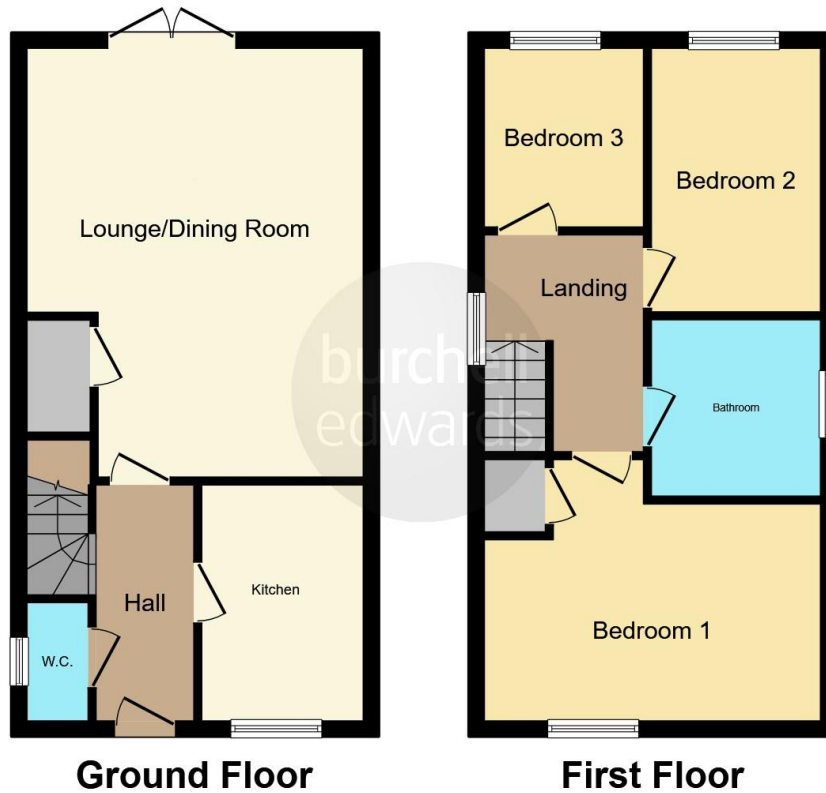
White suite comprising of low level w/c, hand wash basin, panel bath and separate shower cubicle, tiled splash backs, frosted window to side elevation

### Outside

Externally there is a private, lawned rear garden and block paved driveway.







This floor plan is for illustrative purposes only. It is not drawn to scale. Any measurements, floor areas (including any total floor area), openings and orientation are approximate. No details are guaranteed, they cannot be relied upon for any purpose and they do not form part of any agreement. No liability is taken for any error, omission or misstatement. A party must rely upon its own inspection(s). Powered by [www.focalagent.com](http://www.focalagent.com)

To view this property please contact Burchell Edwards on

**T 01283 530 169**  
**E [burton@burchelledwards.co.uk](mailto:burton@burchelledwards.co.uk)**

Britannia House Station Street  
 BURTON-ON-TRENT DE14 1AN

**EPC Rating: B**

Tenure: Freehold

**check out more properties at [burchelledwards.co.uk](http://burchelledwards.co.uk)**



1. MONEY LAUNDERING REGULATIONS Intending purchasers will be asked to produce identification documentation at a later stage and we would ask for your co-operation in order that there will be no delay in agreeing the sale. 2. These particulars do not constitute part or all of an offer or contract. 3. The measurements indicated are supplied for guidance only and as such must be considered incorrect. Potential buyers are advised to recheck measurements before committing to any expense. 4. We have not tested any apparatus, equipment, fixtures, fittings or services and it is in the buyers interest to check the working condition of any appliances.

Burchell Edwards is a trading name of Connells Residential which is registered in England and Wales under company number 1489613, Registered Office is Cumbria House, 16-20 Hockliffe Street, Leighton Buzzard, Bedfordshire, LU7 1GN. VAT Registration Number is 500 2481 05.

**See all our properties at [www.burchelledwards.co.uk](http://www.burchelledwards.co.uk) | [www.rightmove.co.uk](http://www.rightmove.co.uk) | [www.zoopla.co.uk](http://www.zoopla.co.uk)**

Property Ref: BUT208554 - 0003