



Mountbatten Close
Stretton BURTON-ON-TRENT



Mountbatten Close Stretton BURTON-ON-TRENT DE13 0FD

for sale
£250,000



Property Description

This Three Bedroom Detached Property is situated in a quiet cul-de-sac position in the popular residential location of Stretton, Burton On Trent. The accommodation comprises of lounge diner and kitchen on the ground floor along with three bedrooms and the family bathroom to the first floor. Outside to the front is a lawned garden and driveway providing off road parking while to the rear is an enclosed garden mainly laid to lawn with paved patio area

Approach

Lawned garden to the front and off road parking to the side.

Entrance Hall

Central heating radiator, pendant and carpet.

Lounge / Diner

11' 3" x 23' 4" (3.43m x 7.11m)
Window to front aspect, French doors to rear aspect, fireplace with gas point, central heating radiator, carpet, pendants and TV point.

Kitchen

7' 1" x 9' 9" (2.16m x 2.97m)
Window to rear aspect, a range of wall and base units with roll top work surfaces, a one and a half bowl stainless steel sink and drainer, integrated oven and induction hob, extractor hood, integrated fridge/freezer, space and plumbing for a washing machine, tiled to splashback areas and pantry.

Landing

Window to side aspect, pendant, storage cupboard and access to boarded loft space.

Bedroom One

.14' 7" x 8' 7" (4.45m x 2.62m)
Two double glazed windows to front aspect, storage cupboard and carpet.

Bedroom Two

8' x 8' 5" (2.44m x 2.57m)
Window to rear aspect, pendant, carpet and central heating radiator.

Bedroom Three

5' 11" x 8' 1" (1.80m x 2.46m)
Window to rear aspect, pendant, carpet and central heating radiator.

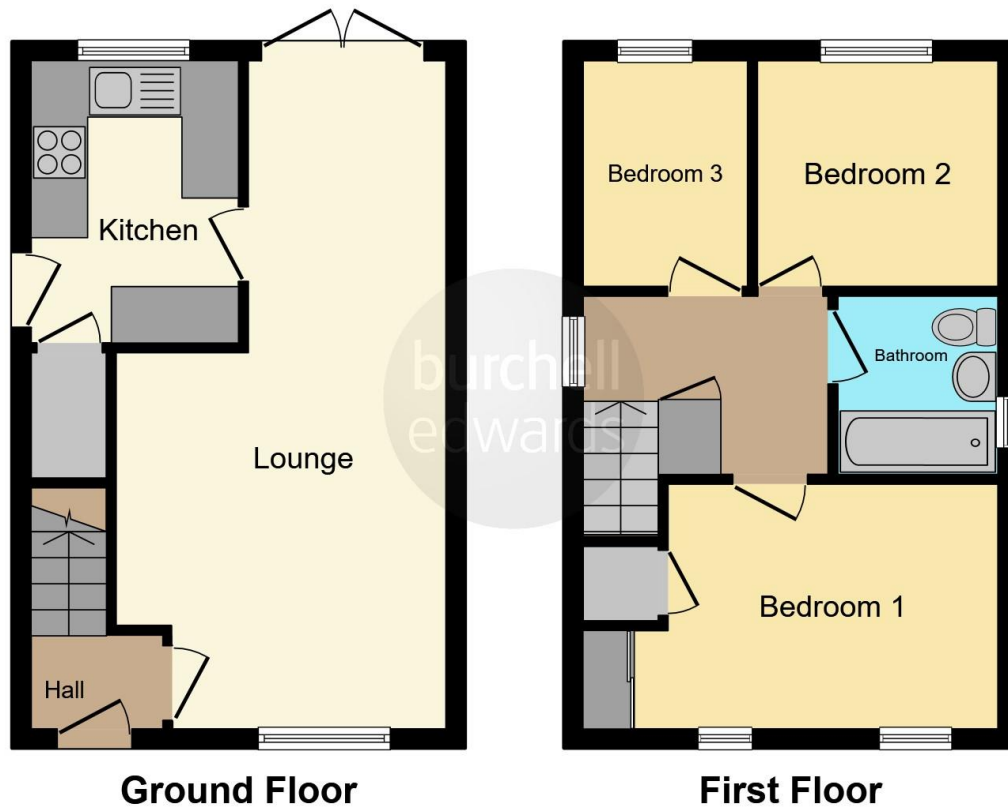
Bathroom

Window to side aspect, bath with electric shower over, low level flush WC, hand wash basin, extractor fan and laminate flooring.

Garden

Lawn and patio areas.





This floorplan is for illustrative purposes only and is not drawn to scale. Measurements, floor-areas, openings and orientations are approximate. They should not be relied upon for any purpose and do not form any part of an agreement. No liability is taken for any error or mis-statement. All parties must rely on their own inspections.

To view this property please contact Burchell Edwards on

T 01283 530 169
E burton@burchelledwards.co.uk

Britannia House Station Street
 BURTON-ON-TRENT DE14 1AN

EPC Rating: D

Tenure: Freehold

view this property online burchelledwards.co.uk/Property/BUT207779



1. MONEY LAUNDERING REGULATIONS Intending purchasers will be asked to produce identification documentation at a later stage and we would ask for your co-operation in order that there will be no delay in agreeing the sale. 2. These particulars do not constitute part or all of an offer or contract. 3. The measurements indicated are supplied for guidance only and as such must be considered incorrect. Potential buyers are advised to recheck measurements before committing to any expense. 4. We have not tested any apparatus, equipment, fixtures, fittings or services and it is in the buyers interest to check the working condition of any appliances.

Burchell Edwards is a trading name of Connells Residential which is registered in England and Wales under company number 1489613, Registered Office is Cumbria House, 16-20 Hockliffe Street, Leighton Buzzard, Bedfordshire, LU7 1GN. VAT Registration Number is 500 2481 05.

See all our properties at www.burchelledwards.co.uk | www.rightmove.co.uk | www.zoopla.co.uk

Property Ref: BUT207779 - 0004