



The Maltings Bailey Mill
Matlock



The Maltings Bailey Mill Matlock DE4 5NR

for sale
£345,000



Property Description

Burchell Edwards are thrilled to unveil its latest partnership with AG Homes, which will offer a collection of exquisite living spaces in the picturesque town of Matlock. The Maltings, at Baileys Mill, boasts an exclusive selection of 13 dwellings, located in the Grade II Listed former Malthouse are two 2-bedroom and two 3-bedroom homes, as well as seven elegant new build 3-bedroom town houses plus two 2-bedroom apartments with prices are starting from £240,000. Call Burchell Edwards now to register your early interest.

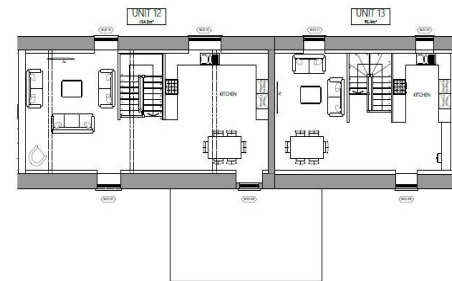
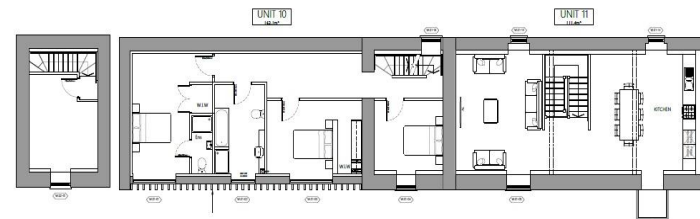
Burchell Edwards are thrilled to unveil its latest partnership with AG Homes, which will offer a collection of exquisite living spaces in the picturesque town of Matlock. The Maltings, at Baileys Mill, boasts an exclusive selection of 13 dwellings, located in the Grade II Listed former Malthouse are two 2-bedroom and two 3-bedroom homes, as well as seven elegant new build 3-bedroom town houses plus two 2-bedroom apartments with prices are starting from £240,000. Call Burchell Edwards now to register your early interest.

Burchell Edwards are thrilled to unveil its latest partnership with AG Homes, which will offer a collection of exquisite living spaces in the picturesque town of Matlock. The Maltings, at Baileys Mill, boasts an exclusive selection of 13 dwellings, located in the Grade II Listed former Malthouse are two 2-bedroom and two 3-bedroom homes, as well as seven elegant new build 3-bedroom town houses plus two 2-bedroom apartments with prices are starting from £240,000. Call Burchell Edwards now to register your early interest.

Burchell Edwards are thrilled to unveil its latest partnership with AG Homes, which will offer a collection of exquisite living spaces in the picturesque town of Matlock. The Maltings, at Baileys Mill, boasts an exclusive selection of 13 dwellings, located in the Grade II Listed former Malthouse are two 2-bedroom and two 3-bedroom homes, as well as seven elegant new build 3-bedroom town houses plus two 2-bedroom apartments with prices are starting from £240,000. Call Burchell Edwards now to register your early interest.









To view this property please contact Burchell Edwards on

T 01773 822622
E belper@burchelledwards.co.uk

1-3 Bridge Street
BELPER DE56 1AY

EPC Rating: Exempt

Tenure: Freehold

[check out more properties at burchelledwards.co.uk](http://www.burchelledwards.co.uk)



1. MONEY LAUNDERING REGULATIONS Intending purchasers will be asked to produce identification documentation at a later stage and we would ask for your co-operation in order that there will be no delay in agreeing the sale. 2. These particulars do not constitute part or all of an offer or contract. 3. The measurements indicated are supplied for guidance only and as such must be considered incorrect. Potential buyers are advised to recheck measurements before committing to any expense. 4. We have not tested any apparatus, equipment, fixtures, fittings or services and it is in the buyers interest to check the working condition of any appliances.

Burchell Edwards is a trading name of Connells Residential which is registered in England and Wales under company number 1489613, Registered Office is Cumbria House, 16-20 Hockliffe Street, Leighton Buzzard, Bedfordshire, LU7 1GN. VAT Registration Number is 500 2481 05.

[See all our properties at www.burchelledwards.co.uk](http://www.burchelledwards.co.uk) | www.rightmove.co.uk | www.zoopla.co.uk

Property Ref: BEL205708 - 0001