

Wellington Road, Bournemouth, BH8 8JN



£1,100 Per Calendar Month



TWO BEDROOMS - CLOSE TO TRANSPORT LINKS AND
TO BOURNEMOUTH TOWN CENTRE - GAS CENTRAL
HEATING - OFF ROAD PARKING - AVAILABLE JUNE
2025

This ground floor two bedroom flat has a great location close to the train station and Bournemouth town centre.

There is a good size lounge, two equally sized double bedrooms, modern kitchen and bathroom. It is double glazed throughout and has gas central heating.

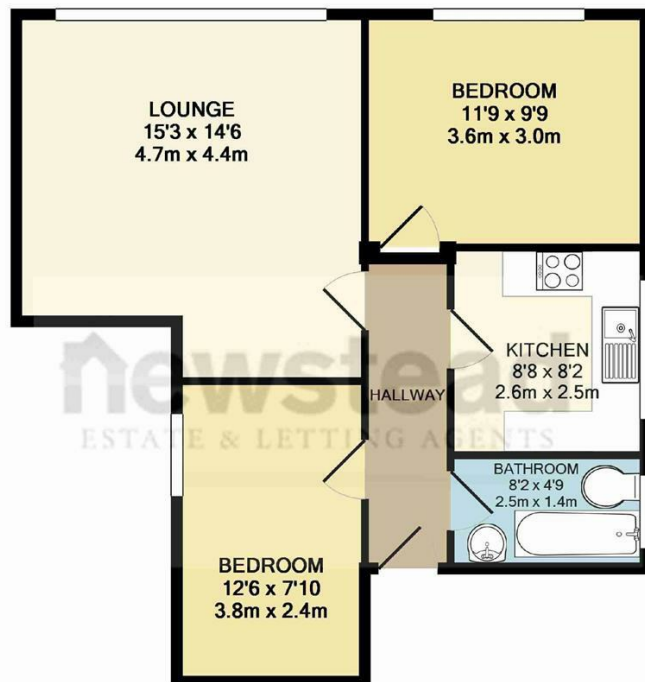
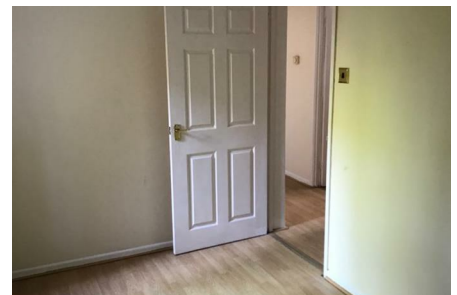
The property also benefits from 2 off road parking spaces.

The property is being offered part furnished, however no white goods are being offered with the property.

Available from 16th March 2020

Council Tax Band C

No pets.



TOTAL APPROX. FLOOR AREA 573 SQ.FT. (53.2 SQ.M.)

Whilst every attempt has been made to ensure the accuracy of the floor plan contained here, measurements of doors, windows, rooms and any other items are approximate and no responsibility is taken for any error, omission, or mis-statement. This plan is for illustrative purposes only and should be used as such by any prospective purchaser. The services, systems and appliances shown have not been tested and no guarantee as to their operability or efficiency can be given

Made with Metropix ©2014

| Energy Efficiency Rating | | | Environmental Impact (CO ₂) Rating | | |
|---|-------------------------|-----------|---|-------------------------|-----------|
| Very energy efficient - lower running costs | Current | Potential | Very environmentally friendly - lower CO ₂ emissions | Current | Potential |
| (91-95) A | | | (91-95) A | | |
| (81-90) B | | | (81-90) B | | |
| (69-80) C | | | (69-80) C | | |
| (55-68) D | | | (55-68) D | | |
| (39-54) E | | | (39-54) E | | |
| (21-38) F | | | (21-38) F | | |
| (1-20) G | | | (1-20) G | | |
| Not energy efficient - higher running costs | | | Not environmentally friendly - higher CO ₂ emissions | | |
| England & Wales | EU Directive 2002/91/EC | | England & Wales | EU Directive 2002/91/EC | |

| | | | |
|----|----|----|----|
| 67 | 76 | 79 | 68 |
|----|----|----|----|