

BELVOIR!

Belvoir Bournemouth
122-124 Castle Lane West, Bournemouth, Dorset, BH9 3JU

Redhill Drive, Redhill, Bournemouth, BH10 6AF



Asking Price £194,950 Leasehold

Call: 01202 430 108

belvoir.co.uk

BELVOIR!

Belvoir Bournemouth
122-124 Castle Lane West, Bournemouth, Dorset, BH9 3JU



Call: 01202 430 108

belvoir.co.uk

PURPOSE BUILT GROUND FLOOR FLAT | NO FORWARD CHAIN | WELL-PRESENTED | TWO DOUBLE SIZED BEDROOMS | LIVING/DINING ROOM WITH COVERED BALCONY | FITTED KITCHEN | BATHROOM | COMMUNAL PARKING | ELECTRIC HEATING | DOUBLE GLAZED

EXCELLENT RESIDENTIAL LOCATION * PETS ALLOWED * OVER 932 YEARS LEASE REMAINING * NO GROUND RENT

The communal entrance opens into the foyer with a further door to the rear where a covered walkway leads to a lobby shared by two flats and private entrance door to the flat that is for sale.

There is a good sized hallway with doors to all principal rooms

There is a Living/Dining room with access to a covered balcony enjoying a pleasing outlook.

The kitchen has a matching range of white wall and floor mounted cupboard units with contrasting roll edge works tops incorporating a single drainer sink unit with tiled surrounds. Integrated electric hob with filter hood over and oven under. Space and plumbing for washing machine. Space for upright fridge/freezer. Side aspect window.

The main bedroom is a larger than average double with built-in wardrobes and side aspect window. The second bedroom is also a double with side aspect window.

The bathroom is part tiled with a white suite comprising wash hand basin with cupboard under, close coupled WC and panelled bath with a wall-mounted 'Mira' shower unit. Heated towel ladder. Side aspect window.

There is communal parking on a first come first served basis. The block also benefits from well-kept communal gardens.

Tenure: 999 year lease that commenced on the 24th June 1959

Service Charge: £1402.48 per annum paid in quarterly instalments

Ground Rent: Non Applicable

Council Tax Band B

BELVOIR!

Belvoir Bournemouth
122-124 Castle Lane West, Bournemouth, Dorset, BH9 3JU

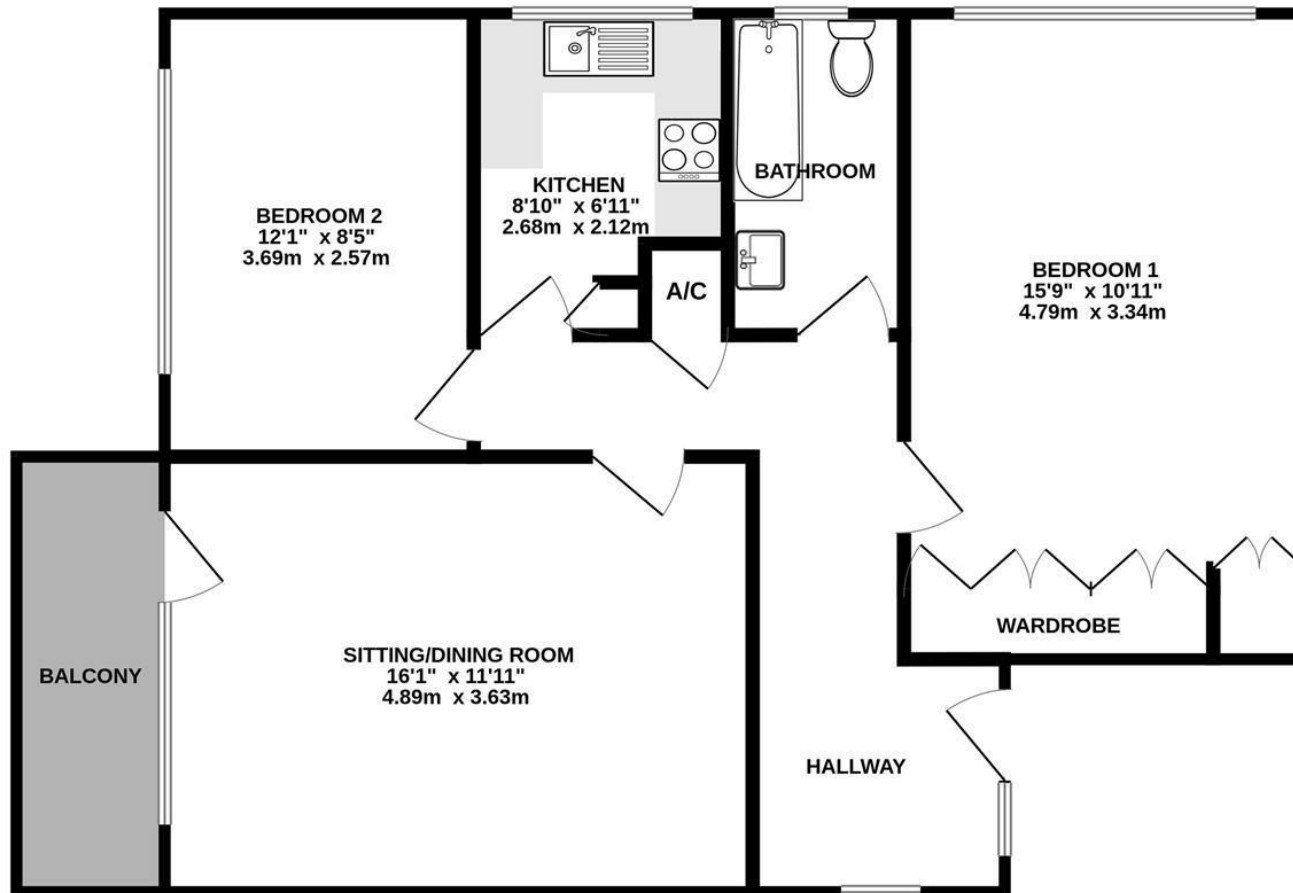


Call: 01202 430 108

belvoir.co.uk



GROUND FLOOR FLAT 696 sq.ft. (64.6 sq.m.) approx.



TOTAL FLOOR AREA : 696 sq.ft. (64.6 sq.m.) approx.

Whilst every attempt has been made to ensure the accuracy of the floorplan contained here, measurements of doors, windows, rooms and any other items are approximate and no responsibility is taken for any error, omission or mis-statement. This plan is for illustrative purposes only and should be used as such by any prospective purchaser. The services, systems and appliances shown have not been tested and no guarantee as to their operability or efficiency can be given.

Made with Metropix ©2025

