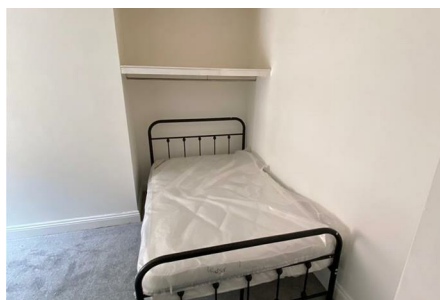


Ashley Road, Parkstone, Poole, Dorset BH14 9BU



£700 Per Calendar Month



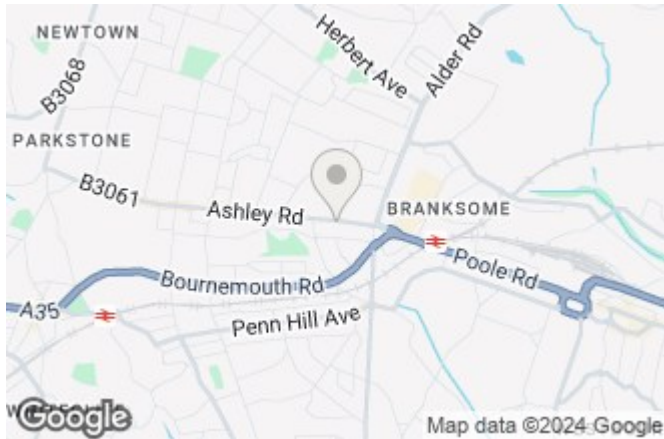
AVAILABLE NOW - NEWLY REFURBISHED STUDIO - CLOSE TO TRANSPORT LINKS

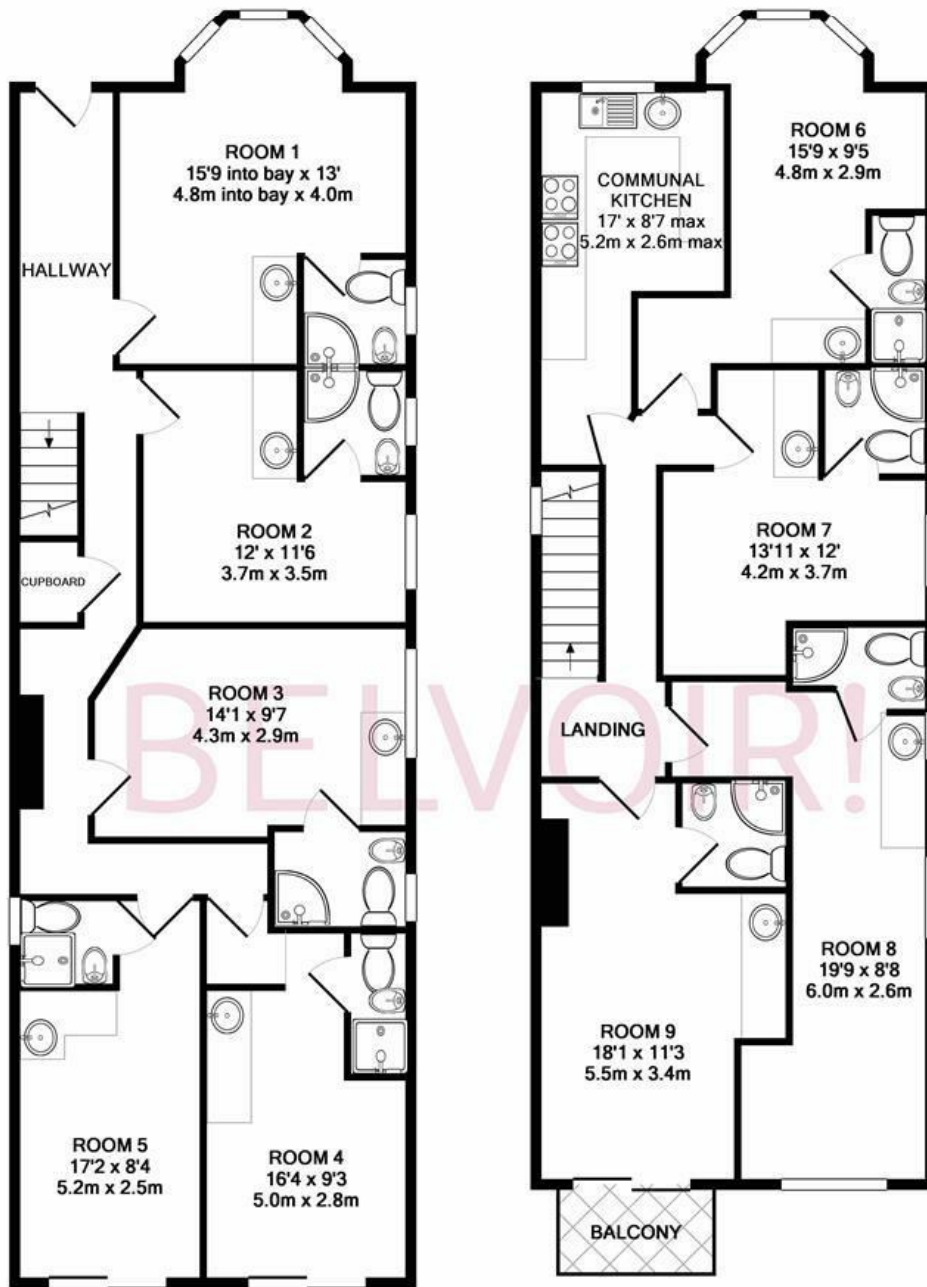
BELVOIR!

Belvoir Bournemouth
122-124 Castle Lane West, Bournemouth, Dorset, BH9 3JU

A recently refurbished studio available NOW. This is a lovely bright, modern rental property that is offered on a long term basis. The property is unfurnished but come with modern fixtures and fittings.

This convenient location is just a short walk from local shops and a is on a main bus route to town.





GROUND FLOOR
APPROX. FLOOR
AREA 955 SQ.FT.
(88.7 SQ.M.)

1ST FLOOR
APPROX. FLOOR
AREA 874 SQ.FT.
(81.2 SQ.M.)

TOTAL APPROX. FLOOR AREA 1830 SQ.FT. (170.0 SQ.M.)

Whilst every attempt has been made to ensure the accuracy of the floor plan contained here, measurements of doors, windows, rooms and any other items are approximate and no responsibility is taken for any error, omission, or mis-statement. This plan is for illustrative purposes only and should be used as such by any prospective purchaser. The services, systems and appliances shown have not been tested and no guarantee as to their operability or efficiency can be given
Made with Metropix ©2017

Energy Efficiency Rating		Current	Potential
Very energy efficient - lower running costs			
(92 plus) A			
(81-91) B			
(69-80) C			
(55-68) D			
(39-54) E			
(21-38) F			
(1-20) G			
Not energy efficient - higher running costs			
England & Wales		EU Directive 2002/91/EC	76

Environmental Impact (CO ₂) Rating		Current	Potential
Very environmentally friendly - lower CO ₂ emissions			
(92 plus) A			
(81-91) B			
(69-80) C			
(55-68) D			
(39-54) E			
(21-38) F			
(1-20) G			
Not environmentally friendly - higher CO ₂ emissions			
England & Wales		EU Directive 2002/91/EC	