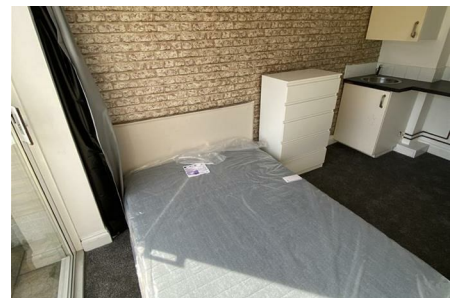


Ashley Road, Parkstone, Poole, Dorset BH14 9BU



£750 Per Calendar Month



NEWLY REFURBISHED STUDIO ROOM - CLOSE TO TRANSPORT LINKS

Newly renovated studio with kitchen and shower.

These are lovely bright, modern studio that are offered unfurnished on a long term basis.

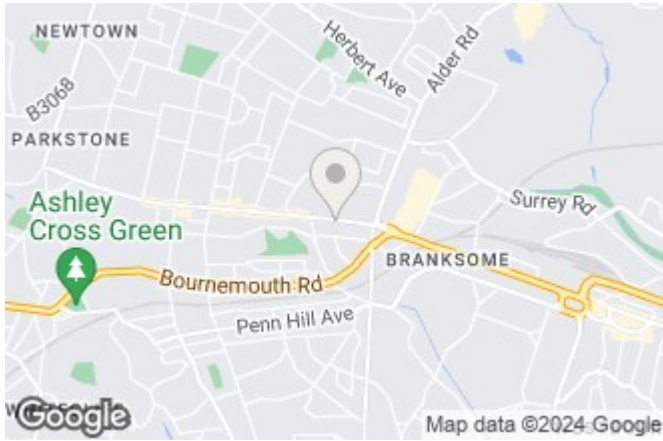
This convenient location is just a short walk from local shops and a is on a main bus route to town.

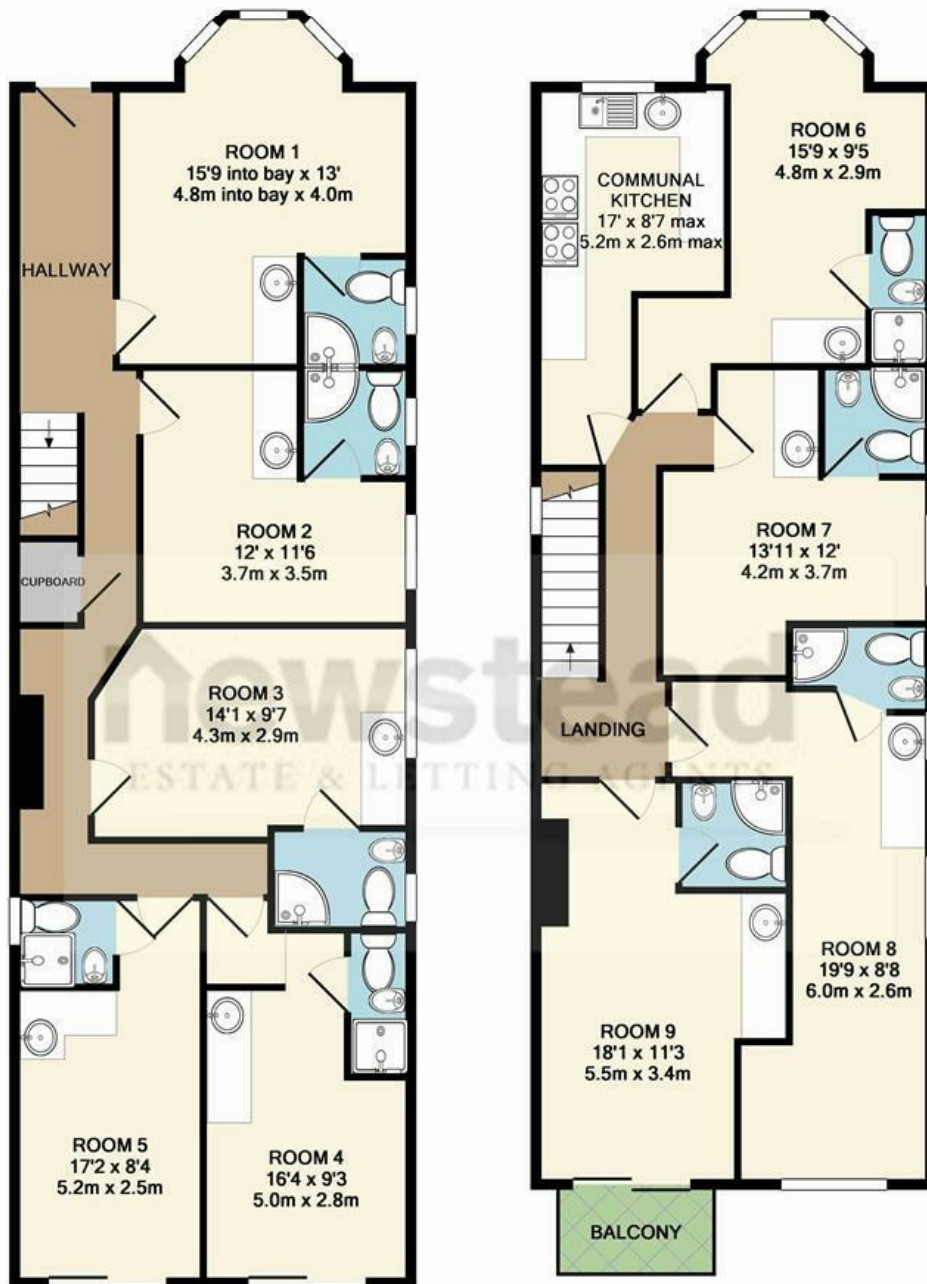
It is a studio with a bathroom and shower and with a kitchen corner, countertop with a sink under which there is a space for fridge and washing machine. Its available for one full time working person only, the minimum income to pass a reference is £24k per annum.

The rent does not include water and electricity which is on the Top Up meter - AVAILABE NOW

BELVOIR!

Belvoir Bournemouth
122-124 Castle Lane West, Bournemouth, Dorset, BH9 3JU





GROUND FLOOR
APPROX. FLOOR
AREA 955 SQ.FT.
(88.7 SQ.M.)

1ST FLOOR
APPROX. FLOOR
AREA 874 SQ.FT.
(81.2 SQ.M.)

TOTAL APPROX. FLOOR AREA 1830 SQ.FT. (170.0 SQ.M.)

Whilst every attempt has been made to ensure the accuracy of the floor plan contained here, measurements of doors, windows, rooms and any other items are approximate and no responsibility is taken for any error, omission, or mis-statement. This plan is for illustrative purposes only and should be used as such by any prospective purchaser. The services, systems and appliances shown have not been tested and no guarantee as to their operability or efficiency can be given
Made with Metropix ©2015

Energy Efficiency Rating		Current	Potential
Very energy efficient - lower running costs			
(92 plus) A			
(81-91) B			
(69-80) C			
(55-68) D			
(39-54) E			
(21-38) F			
(1-20) G			
Not energy efficient - higher running costs			
England & Wales		EU Directive 2002/91/EC	

Environmental Impact (CO ₂) Rating		Current	Potential
Very environmentally friendly - lower CO ₂ emissions			
(92 plus) A			
(81-91) B			
(69-80) C			
(55-68) D			
(39-54) E			
(21-38) F			
(1-20) G			
Not environmentally friendly - higher CO ₂ emissions			
England & Wales		EU Directive 2002/91/EC	