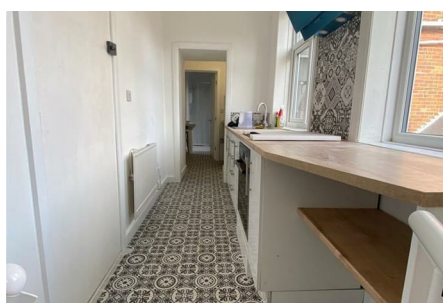
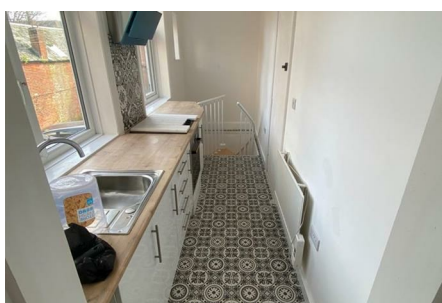


**491 Christchurch Road, Bournemouth, BH1 4AE**



**£750 Per Calendar Month**



**\*\* AVAILABLE NOW \*\* BRAND NEW ONE BEDROOM FLAT \*\* SPLIT LEVEL PROPERTY \*\* SEPARATE KITCHEN \*\*  
MODERN SHOWER ROOM \*\* NO PARKING \*\***

Belvoir Bournemouth is delighted to offer this one bedroom split level flat to rent.

Property is finish to a high standard, which newly fitted bathroom, kitchen and new flooring throughout. Beautiful cosy flat is offer unfurnished on long term let,

Deposit £980  
Council tax band A

**\*\* AVAILABLE NOW \*\***



