



**Price**

**£160,000**

**Leasehold**

2x  1x  1x 

**Wroxall House, High  
Street, Wroxall, Isle of  
Wight, PO38**

**OVER 60?**

Secure this property  
for up to **59% less!**

  
**Pittis**  
Helping you move forwards





## Main features

- First floor apartment in this character building formally part of Wroxall train station
- Spacious and light accommodation throughout
- Wonderful views over the surrounding countryside
- Allocated parking to the front and communal gardens
- Quiet rural village location

## Accommodation

### FIRST FLOOR

Hallway

Lounge/Dining Room: 16'9 x 14'7 (5.11m x 4.45m)

Bedroom 1: 15'4 x 8'10 (4.68m x 2.69m)

Bedroom 2: 12'4 x 8'11 (3.76m x 2.72m)

Kitchen: 10'10 x 10'9 (3.30m x 3.28m)

Bathroom

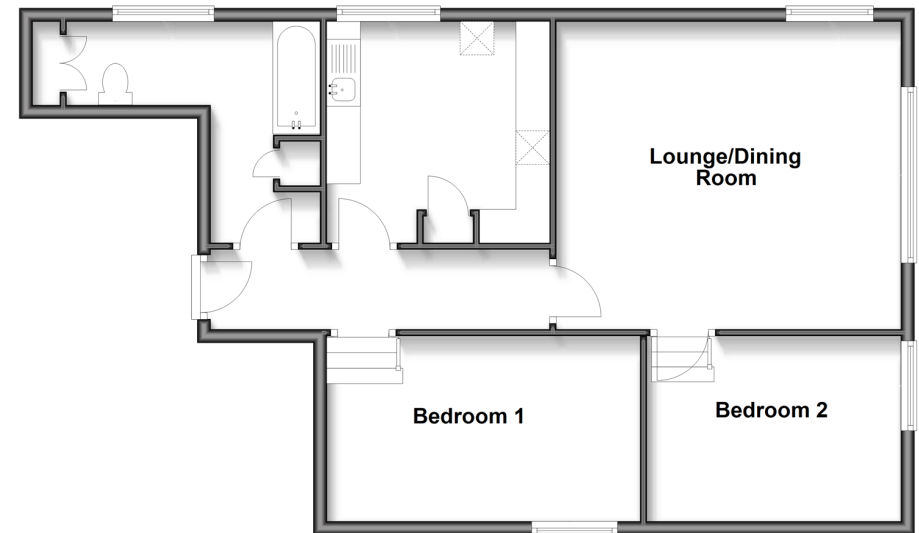
### OUTSIDE

Allocated Parking

Communal Gardens

### Split Level First Floor

Approx. 74.9 sq. metres (805.7 sq. feet)



**Call Ventnor - 01983 856417 ■ pittis.co.uk**

- Legal advice should be taken to verify fixtures/fittings, planning, alterations and/or lease details
- Through a Homewise Home For Life Plan people aged 60+ can secure this property for up to 59% less, by purchasing a Lifetime Lease.

- Appliances & services are untested, dimensions are approximate and floor plans are not to scale



60800618/20250524/DW/CS