



Price
£225,000

Freehold

3x  1x  1x 

**Mountfield Road,
Wroxall, Ventnor, Isle of
Wight, PO38**

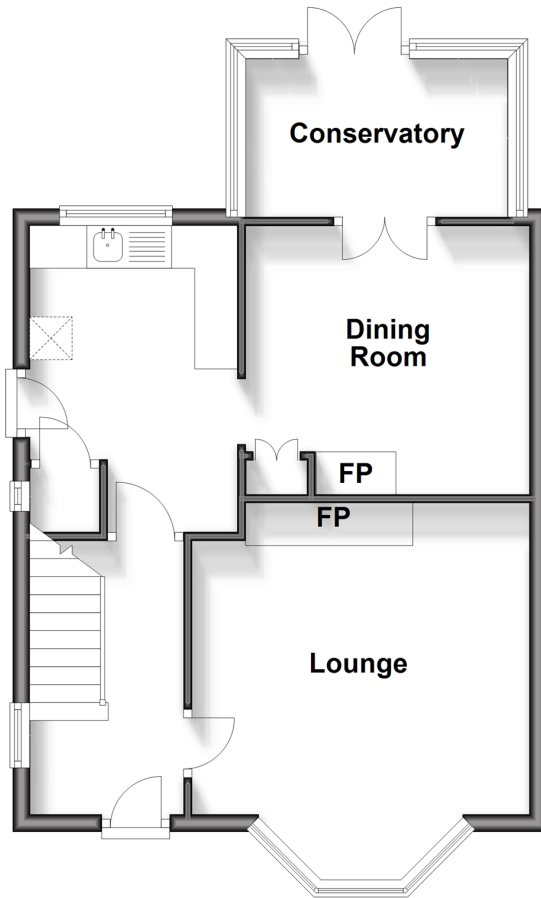
OVER 60?

Secure this property
for up to **59% less!**

Pittis 
Helping you move forwards

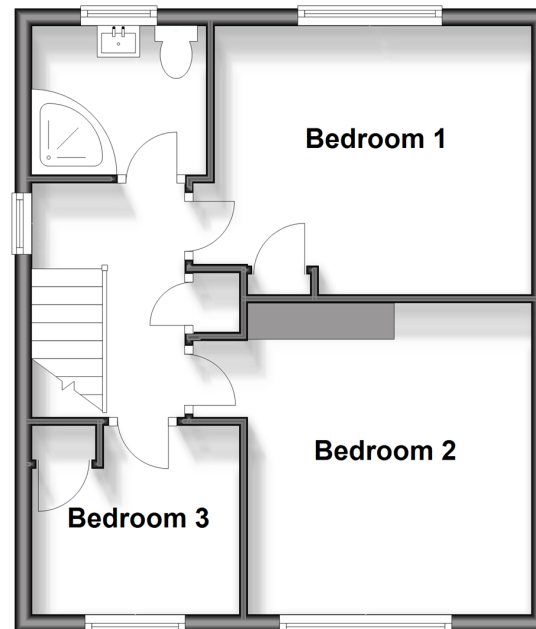
Ground Floor

Approx. 47.1 sq. metres (507.2 sq. feet)



First Floor

Approx. 40.7 sq. metres (438.2 sq. feet)



Accommodation

GROUND FLOOR

Hallway

Lounge: 13'0 x 10'8 (3.97m x 3.25m)

Kitchen: 11'10 x 8'0 (3.61m x 2.44m)

Dining Room: 10'11 x 10'10 (3.33m x 3.30m)

Conservatory: 9'9 x 6'0 (2.97m x 1.83m)

FIRST FLOOR

Landing

Bedroom 1: 12'3 x 10'8 (3.74m x 3.25m)

Bedroom 2: 10'10 x 10'7 (3.30m x 3.23m)

Bedroom 3: 8'8 x 6'8 (2.64m x 2.03m)

Shower Room

OUTSIDE

Front & Rear Gardens



Main features

- Well presented semi detached house
- Good sized accommodation throughout
- In need of some updating and modernisation
- Rural location enjoying countryside views
- Offered to the market chain free



Nearest Schools

Ventnor Middle School
Lake Middle School
Sandham Middle School 4.1 miles
St Catherine's School
Priory School



Transport Information

Local buses providing Islandwide connections.



Address

Mountfield Road, Wroxall, Ventnor, Isle of Wight, PO38



Directions

For directions to this property please contact us.

