



**Modern
Auction**

**£175,000
Leasehold**

2x  1x  1x 

**Alpine Road, Ventnor,
Isle of Wight, PO38**

Pittis 
Helping you move forwards



Main features

- This lower ground floor apartment comes with vacant possession
- Private garden, recently refurbished
- Ideal investment, holiday let or first time buy
- For sale by Modern Auction - T & C's apply
- Subject to an undisclosed Reserve Price - Buyer's fees apply

Accommodation

LOWER GROUND FLOOR

Entrance Hall

Lounge: 13'8 x 13'7 up to bay (4.17m x 4.14m) narrowing to 8'0 x 2'10 into bay (2.44m x 0.86m)

Separate Toilet

Bathroom

Bedroom 1: 16'8 x 10'0 (5.08m x 3.05m)

Kitchen: 12'4 x 8'4 (3.76m x 2.54m)

Utility Area: 7'0 x 2'11 (2.14m x 0.89m)

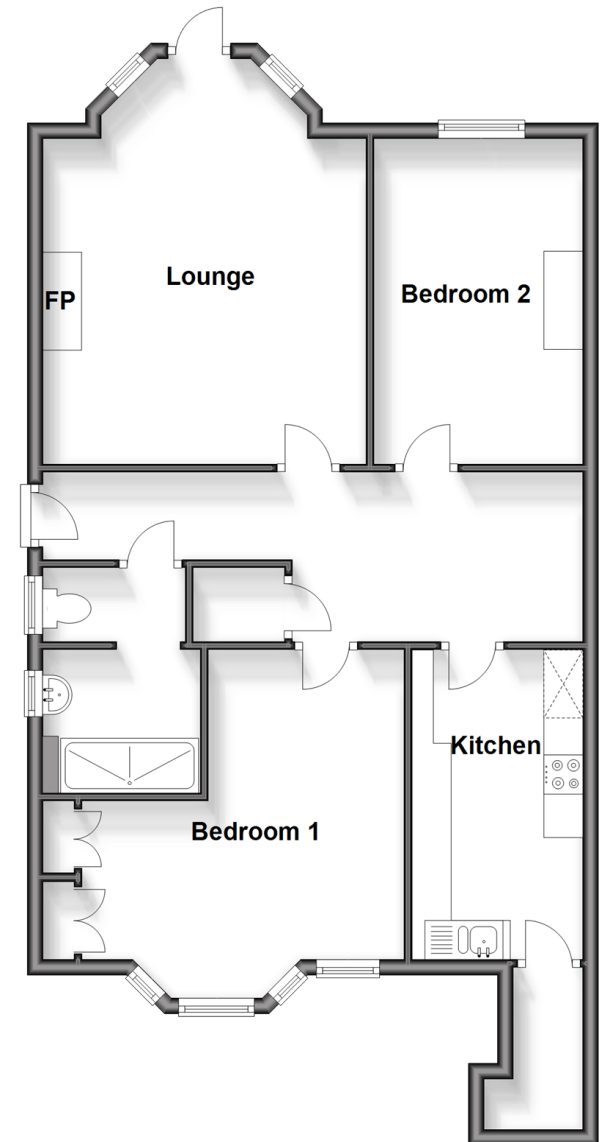
Bedroom 2: 13'0 x 9'0 (3.97m x 2.75m)

OUTSIDE

Garden

Lower Ground Floor

Approx. 77.6 sq. metres (835.7 sq. feet)



Call Ventnor - 01983 856417 ■ pittis.co.uk

- Legal advice should be taken to verify fixtures/fittings, planning, alterations and/or lease details
- Appliances & services are untested, dimensions are approximate and floor plans are not to scale



60802268/20241228/AG/AG