



Price
£230,000

Freehold

3x  1x  2x 

**Downlands Crescent,
Ventnor, Isle of Wight,
PO38**

OVER 60?

Secure this property
for up to **59% less!**

Pittis 
Helping you move forwards



Main features

- Semi detached house with views
- Recently upgraded kitchen & redecoration
- Beautiful garden with party decking which catches the sun afternoon and evening
- Ideally located for schools
- Plenty of features such as fireplaces and picture rails

Accommodation

GROUND FLOOR

- Entrance Hall
- Kitchen: 10'8 x 8'4 (3.25m x 2.54m)
- Dining Room: 10'4 x 10'4 (3.15m x 3.15m)
- Downstairs Cloakroom
- Store / Utility room
- Lounge: 13'10 x 10'1 (4.22m x 3.08m)

FIRST FLOOR

- Landing
- Shower Room
- Bedroom 1 : 11'1 x 10'2 (3.38m x 3.10m)
- Bedroom 2: 10'5 x 10'4 (3.18m x 3.15m)
- Bedroom 3: 8'3 x 7'0 (2.52m x 2.14m)

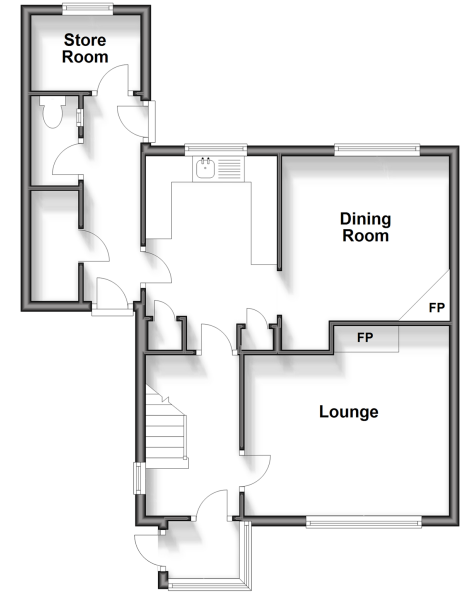
OUTSIDE

- Shed
- Greenhouse
- Front Garden
- Rear Garden

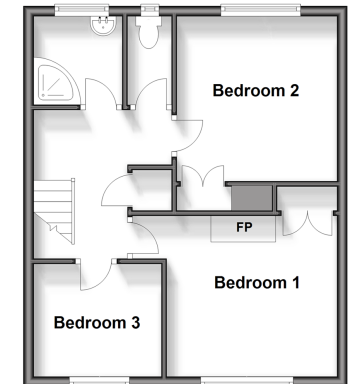
Call Ventnor - 01983 856417 ■ pittis.co.uk

- Legal advice should be taken to verify fixtures/fittings, planning, alterations and/or lease details
- Appliances & services are untested, dimensions are approximate and floor plans are not to scale
- Through a Homewise Home For Life Plan people aged 60+ can secure this property for up to 59% less, by purchasing a Lifetime Lease.

Ground Floor
Approx. 54.0 sq. metres (581.6 sq. feet)



First Floor
Approx. 40.5 sq. metres (436.0 sq. feet)



60802265/20240830/MG/EP