



Price
£215,000

Freehold

3x  1x  1x 

**Brookside Crescent,
Wroxall, Ventnor, Isle of
Wight, PO38**

OVER 60?

Secure this property
for up to **59% less!**

Pittis 
Helping you move forwards



Main features

- End of terraced house with lovely presentation
- Garage and parking space to rear
- Generous lounge /diner, ideal for families
- Double glazed with easy to maintain rear garden
- Located in quiet area with lovely walks and village shop close by

Accommodation

GROUND FLOOR

Hallway

Kitchen : 10'11 x 7'0 (3.33m x 2.14m)

Lounge / Diner: 29'5 x 12'3 at widest point (8.97m x 3.74m)

FIRST FLOOR

Landing

Bedroom 1: 14'3 x 9'3 (4.35m x 2.82m)

Bedroom 2: 12'9 x 9'3 (3.89m x 2.82m)

Bedroom 3: 8'4 x 5'9 (2.54m x 1.75m)

Bathroom

OUTSIDE

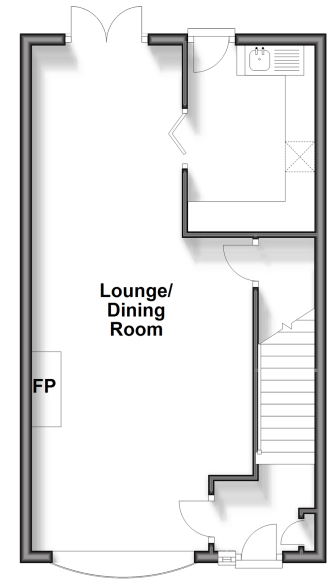
Garage

Off Road Parking

Rear Garden

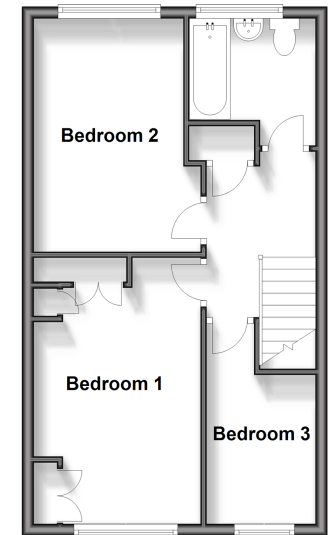
Ground Floor

Approx. 40.8 sq. metres (439.3 sq. feet)



First Floor

Approx. 40.5 sq. metres (436.2 sq. feet)



Call Ventnor - 01983 856417 ■ pittis.co.uk

- Legal advice should be taken to verify fixtures/fittings, planning, alterations and/or lease details
- Appliances & services are untested, dimensions are approximate and floor plans are not to scale
- Through a Homewise Home For Life Plan people aged 60+ can secure this property for up to 59% less, by purchasing a Lifetime Lease.



60615577 / 20240706/DW/EP