



OVER 60?

Secure this property
for up to **59% less!**

Price

£475,000

Freehold

3x  1x  2x 

**Bonchurch Village Road,
Bonchurch, Isle of
Wight, PO38**

Pittis 
Helping you move forwards



Main features

- **Spacious & unique home oozing character & charm**
- **Wrap around gardens of a generous proportion**
- **Panoramic sea views**
- **Tucked away in a secluded spot**
- **Garage and driveway**

Accommodation

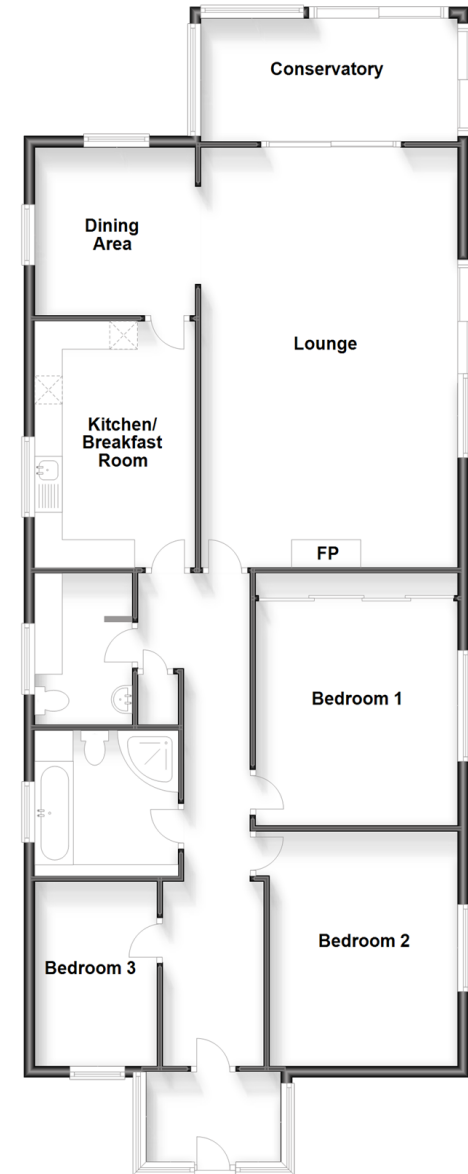
GROUND FLOOR

Porch
Hallway
Lounge: 24'1 x 15'6 (7.35m x 4.73m)
Dining Area: 10'0 x 9'5 (3.05m x 2.87m)
Kitchen/Breakfast Room: 14'4 x 9'8 (4.37m x 2.95m)
Utility : 9'0 x 5'8 (2.75m x 1.73m)
Bedroom 1: 13'7 x 12'1 (4.14m x 3.69m)
Bedroom 2: 13'8 x 11'3 (4.17m x 3.43m)
Bedroom 3: 10'9 x 7'2 (3.28m x 2.19m)
Bathroom
Conservatory

OUTSIDE

Wrap Around Gardens
Garage
Parking

Ground Floor
Approx. 140.6 sq. metres (1513.2 sq. feet)



Call Ventnor - 01983 856417 ■ pittis.co.uk

- Legal advice should be taken to verify fixtures/fittings, planning, alterations and/or lease details
- Appliances & services are untested, dimensions are approximate and floor plans are not to scale
- Through a Homewise Home For Life Plan people aged 60+ can secure this property for up to 59% less, by purchasing a Lifetime Lease.



60802071/20240129/RC/LU